



PARISH COURTS OF JAMAICA – CRIMINAL DIVISION

(JANUARY 1, 2025 – DECEMBER 31, 2025)

Court Metrics	January - December Highlights				
	2025	2024	2023	2022	2021
Case Disposal Rates (%)	69.77	74.69	74.47	74.43	77.51
Case Clearance Rates (%)	103.44	105.55	106.61	124.58	106.47
Trial Date Certainty Rates (%)	73	77	75	72	74
Courtroom Utilization Rates (%)	66.06	65.46	65.72	63.61	59.74

Prepared by the Court Statistics and Data Division with the support of the ICT Department, Supreme Court of Jamaica, Kings Street Kingston.

Table of Contents

List of Tables	2
List of Charts	4
Chief Justice’s Message Annual Criminal Parish Court 2025	5
Executive Summary	12
Methodology	18
Disclaimer	19
Chapter 1.0: Criminal Case Activity Statistics in the Parish Courts for the year ended December 31, 2025	20
Offence Types	52
Methods of Disposal and Conviction Rate	81
Common Reasons for Adjournment	82
The case file integrity rate	83
Chapter 2.0: Case Demographics and Courtroom Activity	86
Inferential Statistics and Conclusion	122
Glossary of Terms	125

List of Tables

Table i	Key Performance Metrics of High-Performing Courts17
Table 1.01	Aggregate case statistics for each Parish Court for the year ended December 31, 202520
Table 1.02a	Aggregate case statistics for each Parish Court as at the year ended December 31, 202523
Table 1.02b	Percentile rank on selected performance metrics for the criminal division of the Parish Courts for the year ended December 31, 202526
Table 1.02c	Forecasted case activity statistics for the 2026 calendar year [January 01, 2026 – December 31, 2026]27
Table 1.02d	Sampling distribution of new cases filed per 10,000 population in the criminal division of the Parish Courts in the year ended December 31, 202528
Table 1.02e	Sampling distribution of the Indices of Judge Productivity for the year ended Dec 31, 202430
Table 1.03	Aggregate summary case statistics for each Parish Court for the period Jan-Dec 202533
Table 1.04	Aggregate summary case statistics for each Parish Court for 2024 and 202535
Table 1.05a	Sampling distribution of mention court activity for cases disposed of in the year ended December 31, 202538
Table 1.05b	Summary of cases heard during the year ended December 31, 202540
Table 1.06a	Comparison of the trial certainty rates for 2024 and 202541
Table 1.06b	Percentile Rank on trial date certainty rate for the criminal division of the Parish Courts in 2024 and 202542
Table 1.06c	Average duration from first trial date set to date of disposal of case for matters resolved by trial in the year ended December 31, 202543
Table 1.06d	Time interval between major events for cases that had a trial date in the year ended December 31, 202444
Table 1.06e	Trial court activity summary during the year ended December 31, 202546
Table 1.07a	Distribution of courtroom utilization rates across the Parish Courts of Jamaica for the year ended December 31, 202547
Table 1.07b	Percentile Rank on Courtroom utilization rate for the criminal division of the Parish Courts in the year ended December 31, 202549
Table 1.08	Types of matters for each Parish Court for the year ended December 31, 202550

Table 1.09.01	Distribution of the most frequently occurring charges filed at the Hanover Parish Court-Criminal Division in year ended December 31, 202552
Table 1.09.02	Distribution of the most frequently occurring charges filed at the Manchester Parish Court-Criminal Division in year ended December 31, 202553
Table 1.09.03	Distribution of the most frequently occurring charges filed at the Portland Parish Court-Criminal Division in year ended December 31, 202553
Table 1.09.04	Distribution of the most frequently occurring charges filed at the St. Ann Parish Court-Criminal Division in year ended December 31, 202554
Table 1.09.05	Distribution of the most frequently occurring charges filed at the St. Catherine Parish Court-Criminal Division in year ended December 31, 202555
Table 1.09.06	Distribution of the most frequently occurring charges filed at the St. Elizabeth Parish Court-Criminal Division in year ended December 31, 202556
Table 1.09.07	Distribution of the most frequently occurring charges filed at the St. James Parish Court-Criminal Division in year ended December 31, 202557
Table 1.09.08	Distribution of the most frequently occurring charges filed at the St. Mary Parish Court-Criminal Division in year ended December 31, 202557
Table 1.09.09	Distribution of the most frequently occurring charges filed at the St. Thomas Parish Court-Criminal Division in year ended December 31, 202558
Table 1.09.10	Distribution of the most frequently occurring charges filed at the Trelawny Parish Court-Criminal Division in year ended December 31, 202559
Table 1.09.11	Distribution of the most frequently occurring charges filed at the Westmoreland Parish Court-Criminal Division in year ended December 31, 202560
Table 1.09.12	Distribution of the most frequently occurring charges filed at the Clarendon Parish Court-Criminal Division in year ended December 31, 202560
Table 1.09.13	Distribution of the most frequently occurring charges filed at the Corporate Area Parish Court-Criminal Division in year ended December 31, 202561
Table 1.10	Conviction rate for summary and indictment matters heard in the year ended December 31, 202562
Table 1.11	Sampling distribution of the most frequently occurring charges across the Parish Courts for the year ended December 31, 202563
Table 1.12	Conviction rate for leading occurring charges heard in the year ended December 31, 202564
Table 1.13	Sampling distribution of the average age of active charges for each Parish Court for year ended December 31, 202565
Table 1.14	Average age of charges disposed for matters originating in the year ended December 31, 202566
Table 1.15a	Sampling distribution of the times to disposition as at the year ended December 31, 202568
Table 1.15b	Sampling distribution of the times to disposition for matters completed in the year ended December 31, 202570
Table 1.16a	Descriptive statistics on the time to disposition for cases disposed as at the year ended December 31, 202572
Table 1.16b	Descriptive statistics on the time to disposition for matters completed in the year ended December 31, 202574
Table 1.16c	Net and gross criminal case backlog as at the year ended December 31, 2025 for cases over 24 months76
Table 1.16d	Net and gross criminal case backlog as at the year ended December 31, 2025 for cases over 20 months78
Table 1.17	Distribution of methods of disposition for matters set for trial during the year ended December 31, 202580
Table 1.18	Sampling distribution of the methods of disposition for the year ended December 31, 202581
Table 1.19.01	Sampling distribution of the most frequently occurring reasons for adjournment for the year ended December 31, 202582
Table 1.19.02	Summary of case management date activity for matters heard in the year ended December 31, 202584
Table 2.01	Sampling distribution of the most frequently occurring charges by gender for the year ended December 31, 202586
Table 2.02.01	Aggregate case statistics for each courtroom and outstation in the Parish of Westmoreland for the year ended December 31, 202587
Table 2.02.02	Aggregate case statistics for each courtroom and outstation in the Corporate Area for the year ended December 31, 202589
Table 2.02.03	Aggregate case statistics for each courtroom and outstation in the Parish of St. James for the year ended December 31, 202590

Table 2.02.04	Aggregate case statistics for each courtroom and outstation in the Parish of St. Catherine for the year ended December 31, 202592
Table 2.02.05	Aggregate case statistics for each courtroom and outstation in the Parish of St. Thomas for the year ended December 31, 202593
Table 2.02.06	Aggregate case statistics for each courtroom and outstation in the Parish of Trelawny for the year ended December 31, 202594
Table 2.02.07	Aggregate case statistics for each courtroom and outstation in the Parish of St. Mary for the year ended December 31, 202596
Table 2.02.08	Aggregate case statistics for each courtroom and outstation in the Parish of Portland for the year ended December 31, 202597
Table 2.02.09	Aggregate case statistics for each courtroom and outstation in the Parish of Hanover for the year ended December 31, 202599
Table 2.02.10	Aggregate case statistics for each courtroom and outstation in the Parish of St. Ann for the year ended December 31, 2025101
Table 2.02.11	Aggregate case statistics for each courtroom and outstation in the Parish of Clarendon for the year ended December 31, 2025102
Table 2.02.12	Aggregate case statistics for each courtroom and outstation in the Parish of Manchester for the year ended December 31, 2025104
Table 2.02.13	Aggregate case statistics for each courtroom and outstation in the Parish of St. Elizabeth for the year ended December 31, 2025105
Table 2.02.14	proportion of cases heard at the main court and outstation across all Parish Courts106

List of Charts

Chart 1.01a	Summary of changes in the number of new cases filed in 2024 and 202529
Chart 1.01b	Summary of changes in the number of cases disposed of in 2022 and 202330
Chart 1.2.01	Aggregate summary of selected case activity metrics over the four quarters of 202534
Chart 1.2.02a	Comparison of case disposal rates across the Parish Courts for 2024 and 202536
Chart 1.2.02b	Comparison of case clearance rates across the Parish Courts for 2024 and 202536
Chart 1.2.02c	Comparison of case congestion rate across the Parish Courts for 2024 and 202537
Chart 2.01	Aggregate age distribution of persons charged for all Parish Courts for the year ended December 31, 2025108
Chart 2.02	Aggregate gender distribution of persons charged for the year ended December 31, 2025109
Chart 2.03.01	Distribution of criminal charges by the police station of origin at the Manchester Parish Court for the year ended December 31, 2025110
Chart 2.03.02	Distribution of criminal charges by the police station of origin at the Clarendon Parish Court for the year ended December 31, 2025111
Chart 2.03.03	Distribution of criminal charges by the police station of origin at the St. Catherine Parish Court for the year ended December 31, 2025112
Chart 2.03.04	Distribution of criminal charges by the police station of origin at the St. Thomas Parish Court for the year ended December 31, 2025113
Chart 2.03.05	Distribution of criminal charges by the police station of origin at the Portland Parish Court for the year ended December 31, 2025114
Chart 2.03.06	Distribution of criminal charges by the police station of origin at the St. Mary Parish Court for the year ended December 31, 2025115
Chart 2.03.07	Distribution of criminal charges by the police station of origin at the St. James Parish Court for the year ended December 31, 2025116
Chart 2.03.08	Distribution of criminal charges by the police station of origin at the Corporate Area Criminal Court for the year ended December 31, 2025117
Chart 2.03.09	Distribution of criminal charges by the police station of origin at the Westmoreland Parish Court for the year ended December 31, 2025118
Chart 2.03.10	Distribution of criminal charges by the police station of origin at the Hanover Parish Court for the year ended December 31, 2025119
Chart 2.03.11	Distribution of criminal charges by the police station of origin at the St. Ann Parish Court for the year ended December 31, 2025120
Chart 2.03.12	Distribution of criminal charges by the police station of origin at the Trelawny Parish Court for the year ended December 31, 2025121

Chief Justice's Message Annual Criminal Parish Court 2025

The Parish Courts of Jamaica have accomplished and maintained a steady state of high clearance rates overall with consequential backlog reduction and reduced times for adjudication and disposition of cases. The performance of these courts is impressive and makes them one of the best performing courts within the Caribbean and Latin American region. As with elite sprinters, it is with efficient courts: there is the relentless quest for fine tuning to achieve even better performances so that the service to stakeholders is improved.

2025 Performance Highlights

The Criminal Division of the Parish Courts took in **20,451 new criminal cases** in 2025 and resolved 22,221. This means that overall, more cases were disposed of than cases coming in. As noted earlier, there are some courts where this is not the case and those courts will be examined more closely to determine what more needs to be done for them to dispose of more cases than they take in.

It must be noted that after nearly a decade of data collection and analysis there is no evidence that volume of cases in and of itself contributes significantly or at all to the performance of the courts. That is, there is no correlation between large intake of cases and low case clearance rates or low intake and high clearance rates. St Catherine, one of the largest courts in terms of case volume, achieved a clearance rate of 126.08% for 2025. The Corporate Area Criminal courts, the largest in terms of case volume, had a clearance rate of 108.53%. In other words, two of our largest courts by case volume are among the more efficient.

Key Performance Achievements

Case Clearance Excellence: The courts achieved an overall case clearance rate of **103.44%**, a decline of 2.11 percentage points from 2024, meaning that for every 100 new cases filed, approximately 103 cases were disposed of.

Ten of our thirteen parish courts met or exceeded the international standard of 90-110% for this critical metric. Leading performers included St. Catherine Parish Court (126.08%), Portland Parish Court (124.79%), and St. Ann Parish Court (109.38%). Our domestic standard is 95%. Of the parish courts in the parishes visited by Hurricane Melissa, four - St James, Hanover, Westmoreland, and St Elizabeth – had a lower clearance rate in 2025 when compared to 2024. Trelawny which was also hit by the hurricane had a higher clearance rate in 2025 than 2024.

The performance of Hanover and Westmoreland must be placed in context. Even with the clearance rate in 2025 being lower than 2024, these two parishes along with St Catherine are near zero backlog rate.

It should be noted that the overall time for disposing of cases in the parish courts is 15.5 months with Hanover and St Elizabeth having an overall average of 10 months. This confirms the correctness of the decision to reduce the time standard to 20 months.

Backlog Management Success: It is the case that even with a 20 month time standard the net backlog rate is still under 3% (the international standard is 5%). The net case backlog rate for cases over 24 months stands at an impressive **2.16%**, well below our strategic target of 5%. This 24 month time standard was revised downward to 20 months, and on that standard the net backlog is 2.29%. The Parish Courts of Hanover (0.11%), Westmoreland (0.39%), and St.

Catherine – all on a 20 month time standard - have achieved near-zero net backlog rates. This is an outstanding accomplishment worthy of public recognition.

The gross backlog at the 20 month time standard is 16.42%. A significant portion of this backlog is the unexecuted bench warrants issued by judges. Of these bench warrants unexecuted warrants in traffic cases are very high. The parishes of St Mary and St Catherine have launched special drives to address this issue. The learning acquired from these two parishes will inform similar efforts in other parishes. Success will be achieved, when the gross backlog falls to less than 10%, the commonly accepted global standard.

To achieve this greater effort will have to be placed on the high number of unexecuted which make up the gross backlog. Unexecuted bench warrants also mean that there is significant uncollected revenue owed to the state by sureties who stood bail for defendants.

Swift Case Resolution: Analysis reveals that **36.12%** of disposed cases were resolved within 90 days, **56.54%** within six months, and **76.14%** within 12 months. Put another way, only 23.86% of cases in the parish courts go over 12 months. The courts of Hanover (87 days average), St. Elizabeth (132 days), and St. James (140 days) demonstrated exceptional speed in case disposition. Quite likely, this is a reflection of the composition of the case load since rural parishes such as Hanover, St Elizabeth and to a lesser degree St James tend not to have significant and complex fraud and money laundering cases, as is the case with Kingston. It may very well be that, in time, each court will have its own case clearance targets based on the composition of the cases in that court.

Courtroom Efficiency: Our courtroom utilization rate increased to **66.06%**, representing a 0.60 percentage point improvement over 2024. The Corporate Area Criminal Division (76.17%), St. Catherine (76.09%), and St. Mary (75.18%) led in maximizing available court time. The performance on this metric shows that there is still under utilised capacity in our courts. Put another way, there is still over 20% of unutilised courtroom time that is available for more cases to be disposed of.

Areas Requiring Continued Focus

Trial Date Certainty: The overall trial date certainty rate declined to **73%** in 2025, falling short of our minimum target of 85% and our aspirational goal of 95%. Portland (99%), Manchester (95%), St. Ann (93%), and St. James (93%) met international standards, demonstrating that excellence is achievable system-wide. Efforts will intensify to improve trial date certainty across all parish courts to at least 85% but preferably 95%. No case should spend longer in court than is absolutely necessary.

High trial date certainty is an indicator of efficiency and has an impact on the quality of justice dispensed. The greater the uncertainty that a matter will go on, the more likely it is that persons will lose interest in their cases. This can start a negative cycle in the minds of citizens who may well decide that it is pointless to pursue cases through the courts. This in turn undermines public trust and confidence.

Case Disposal Rates: The overall case disposal rate for cases originating in 2025 was **69.77%**, representing a 4.92 percentage point decline from 2024. We must strive to meet the minimum standard of 75% to ensure that newly filed cases progress efficiently through the system to final disposition. This metric is extremely important because it indicates how the

courts are coping with new cases that enter the court system. It is vital that these case are managed efficiently so that they are disposed of fairly, quickly, efficiently, and at least costs. While the courts do not control fees charged by counsel, they can reduce costs by reducing the number of court appearances to the irreducible minimum.

Addressing Court Delays

The primary reasons for court adjournments included warrants issued for non-appearance of defendants (15.35%), adjournments for disclosure (4.64%), referrals to mediation (4.36%), and incomplete files (4.23%). These factors directly impact trial date certainty and overall case progression efficiency. Better use of technology can reduce the instances of adjournments for disclosure. Referrals to mediation may not necessarily be an impediment provided that they result in the disposition of the case. Incomplete files are a function of investigation and gathering all relevant material in a timely manner. Sometimes, the delay is unavoidable because a third party – hospital or forensic service – may need to produce a report. At other times, a victim may be hospitalised and cannot yet provide the information necessary to complete the file.

Approximately **89.38%** of disposed cases sampled were resolved within five or less case management dates, reflecting effective case management practices. However, we recognize the need to further reduce adjournments through improved file preparation, better implementation and use of differentiated case management principles, enhanced defendant appearance mechanisms such as sending reminders using available technology, and timely disclosure protocols.

Strategic Alignment

The Parish Courts' performance contributes directly to **Jamaica's Vision 2030 National Goal 2** (The Jamaican Society is Secure, Cohesive and Just) and **National Outcomes 5** (Safety and Security) and **9** (Effective Governance), and **United Nations Sustainable Development Goal 16**: "Peace, Justice and Strong Institutions."

From all available statistical evidence, the Criminal Division of the Parish Courts is now among the most efficient in the Caribbean and Latin American region in the timely delivery of justice. We have achieved our strategic target of reducing net case backlog below 5%, while sustaining exceptionally high case clearance rates above 100%.

Commitment to Excellence

The Judiciary remains committed to further reducing average disposition times, enhancing trial date certainty, and achieving backlog-free status across the entire system. Through continued investment in case management innovation, judicial training, infrastructure enhancement, and stakeholder collaboration, we will advance toward our vision of being among the best-performing court systems globally.

We recognize that justice delayed is justice denied. Every case represents a life affected, a family awaiting resolution, and a community seeking closure. Our 20,451 cases in 2025 represent 20,451 opportunities to deliver justice efficiently, fairly, and with dignity.

Acknowledgments

We extend appreciation to all judicial officers, court administrators, Data Entry Officers, support staff, and justice sector partners whose dedication makes these achievements possible. Special recognition is due to the Courts Statistics and Data Division and the ICT Department for their technical excellence in data management and reporting.

To the people of Jamaica, the Judiciary remain steadfast in our commitment to accessible, efficient, and fair administration of justice. We invite your continued engagement, feedback, and support as we advance together toward judicial excellence.

The Honourable Mr. Justice Bryan Sykes, OJ, CD
Chief Justice of Jamaica

Executive Summary

This statistical report for the 2025 calendar year is for the criminal division of the parish courts. The criminal division of the parish courts has already achieved one of its main key strategic targets, that of reducing the overall net case backlog rate to less than 5%, as it continues to sustain exceptionally high case clearance rates. From all available statistical accounts, the criminal division of the parish courts is now among the most efficient in the Caribbean and Latin American region in the timely delivery of justice. It is now critical that the criminal division of the parish courts strive to reduce the overall average time taken to dispose of cases and in so eventually reduce the net case backlog rate to the point that it can be classified as a whole as being backlog free.

The aggregate new case count in the parish courts in the 2025 calendar year was 20,451, a decrease of 0.04% when compared to the corresponding period in the previous year. The Corporate Area Parish Court - Criminal Division with 4,725 new cases or 23.10% of the total sample, followed by the St. Catherine and Westmoreland Parish Courts with 2,646 cases or 12.94% and 1,921 cases or 9.39% respectively, account for the three largest proportions of the new criminal cases filed in the period. Taken together, the three parishes with the highest new case count account for 45.44% of the new cases filed in the 2025 calendar year, not dissimilar to the previous year. The parish courts of Hanover, St. Thomas and St. Elizabeth accounted for the lowest shares of the aggregate new cases filed in the period, each with under 5.0% of the total new caseload.

The overall average disposal rate for cases originating in the 2025 calendar year was 69.77%, which is a decline of 4.92 percentage points when compared to the corresponding period in the previous year. The Hanover Parish Court leads the way with a disposal rate of 81.31%, thereby resolving new cases the fastest in the period. The St. James and St. Ann Parish Courts

ranked next with case disposal rates of 80.75% and 74.65% respectively, continuing western dominance on this metric.

The case clearance rate provides a measure of the number of cases disposed (regardless of date/year of initiation) for every new case filed in a particular period. This is a productivity index as many of the disposed cases, which are included in its computation, would have originated before the period of focus and is a more instructive statistic on case activity than the case disposal rate. The overall case clearance rate for the 2025 calendar year was 103.44%, a decline of 2.11 percentage points when compared to the corresponding period in the previous year. The result suggests that for every 100 new criminal cases that were filed in the parish courts in the 2025 calendar year, roughly 103 cases were disposed. Ten (10) of the 13 parish courts satisfied the international standard of between 90% and 110% in the 2025 calendar year. The best performing court on this measure was the St. Catherine Parish Court with an impressive rate of 126.08%, while the Portland Parish Court with 124.79% and the St. Ann Parish Court with 109.38% rounded off the top three performers on this key metric.

One highly important measure, which is of keen interest to the leadership of the courts and the policy makers, is the case congestion rate. This is a measure of how well a court is doing in managing its pending caseload, relative to its rates of disposition and clearance and the implied state of resources. The higher the case congestion rate of a court, the more burdensome the caseload and the longer it will take to dispose of cases, again within the context of the existing rates of disposition and clearance and the implied state of resources. The overall case congestion rate recorded for the criminal division of the parish courts in the 2025 calendar year was 155.03%, which is a deterioration of 12.82 percentage points when compared to the 2024 calendar year. The parish courts of St. Catherine, Portland, Hanover, and St. James continue to be among the least congested court at the end of the year. The case

of St. Catherine is of special interest in this regard given its relatively large caseload. There is a long run negative association between the case clearance rate and the case congestion rate, therefore, sustained increases in the case clearance rate will cause the case congestion rate to fall.

Another essential measure, which is an important cornerstone in the drive to bring Jamaica among the best performing court systems in the world is the trial date certainty rate. This provides a measurement of the likelihood that dates set for trial will proceed as scheduled (without adjournment for future dates). The perfect rate of 100% would suggest that all dates set for trial proceed as scheduled in the relevant period. The criminal division of the parish courts recorded an overall trial date certainty rate of 73% in the 2025 calendar year, a 4-percentage points decline when compared to the same as the corresponding period in 2024. The parish courts of Portland, Manchester, St. James, and St. Ann were the leaders on this metric.

The proportion of allocated court time that is utilized for hearings in each parish court bears some long run correlation with the case clearance rate, the case congestion rate and overall court performance. The courtroom utilization rate provides a solid measurement of the proportion of time allocated for court hearings, which are utilized throughout the period in each court. The overall courtroom utilization rate across the parish courts in the period was 66.06%, an increase of 0.60 percentage points when compared to the corresponding period in the previous year. The parish courts of Corporate Area - Criminal Division, St. Catherine, and St. Mary were the leaders on this metric during the year.

On the matter of caseload distribution in the individual parishes, the data shows that in many instances the outstation courts in the respective parishes are carrying a notable share of the caseload. The overall average number of new cases heard in the outstations in the 2025

calendar year is approximately 35.49%, while roughly 64.51% of cases were heard at the main parish court locations. While outstation court activity in parishes such as St. James and the Corporate Area account for less than 10% of total activity, there are several parishes where outstations are extensively utilized, accounting for over 30% of total case activity. This includes the parish courts of Trelawny, St. Elizabeth, and Hanover, among others. The evidence continues to suggest that there is the potential in many parishes for outstations to be utilized to a greater degree to ease the caseload carriage in the main courts, thus potentially enhancing case clearance and disposal rates by reducing the case congestion.

The largest proportion of cases disposed in the 2025 calendar year was by way of guilty pleas, accounting for 24.08% of the cases resolved. This was followed by cases dismissed, which was responsible for 20.49% of the cases disposed. It is of note that guilty verdicts accounted for roughly 6.36% of the matters disposed, while not guilty verdicts accounted for 17.72% of the total sample. Mediated settlements (of various forms) accounted for roughly 14.25% of the cases disposed during the year. The combined 30.44% of the cases disposed by way of guilty outcomes represent the estimated criminal conviction rate in the parish courts for the year. Further analysis of the data suggests that for the cases originating over at least over the past roughly 9 years, which are disposed, roughly 36.12% were resolved within 90 days, 56.54% within six months and 76.14% within a year.

In terms of the distribution of case types, the report highlights that the largest proportion of the criminal cases filed in the parish courts were indictments with approximately 44.95% of all matters. This is followed by summary matters with a roughly 26.94% and Lay Magistrates' matters which accounted for 13.31%. Summary matters had an overall conviction rate of 54.99% in the year, while indictments had a conviction rate of 16.29% across the parish courts.

An important delay factor, which affects the efficiency with which cases move towards disposition is the incidence of adjournments in the parish courts. The data suggests that the dominant reasons for adjournments for year were warrants issued due to the non-appearance of defendants with 15.35%, adjournments for disclosure which accounted for 4.64%, referrals to mediation with 4.36% and incomplete files with 4.23%, rounding off the top four incidences. Also featuring prominently on the lists of reasons for adjournment across the parish courts during the year are adjournments for psychiatric evaluations to be done, adjournment at the request of the crown, medical reports unavailable and subpoena of investigating officers. This probability distribution for the reasons for adjournment was broadly similar to that of the past few years.

The three most frequent criminal charges filed in the parish courts in the 2025 calendar year were assault occasioning bodily harm, unlawful wounding and malicious destruction of property. The majority of charges filed during the year involved accused males, accounting for roughly 82.43%, with females accounting for 17.57%. The dominant age group of persons charged in period were the 27 – 36 and 37 - 50 age groups, accounting for 33.01% and 26.59% respectively of the total sample.

One of the most decisive and instructive findings from this yearly report comes from the analysis of the distribution of times to disposition in the parish courts. The report reveals that on average, the criminal division of the parish courts took roughly 15.5 months to resolve cases in the 2025 calendar year. The courts which had the shortest times to disposition for cases resolved are the parish courts of Hanover (87 days), St. Elizabeth (132 days) and St. James (140 days).

Using the method of exponential smoothing, the report forecasts that in the 2026 calendar year, 20,612 new criminal cases will be filed in the criminal division of the parish courts, while

22,487 are expected to be disposed or become inactive during the period. The overall forecasted case clearance rate for the 2026 calendar year in the criminal division of the parish courts is therefore roughly 109.10%. The parish courts of St. Catherine, Corporate Area - Criminal Division and St. Elizabeth are forecasted to register the highest case clearance rates in the 2026 calendar year.

With over nine years of extensive data on case activity in the parish courts of Jamaica, Lagrange multiplier techniques were applied to determine the minimum requirements that a highly successful court must meet in order to satisfy an efficiency threshold for the sustainable containment of case backlog and to provide optimal service to the public. The minimum annual required standards for each key parameter are summarized in the table below:

Table i: Key Performance Metrics of High-Performing Courts

Parameter	Minimum Annual Required Standard	Rates for the 2025 calendar year
Case Disposal Rate	>=75%	69.77
Case Clearance Rate	>=100%	103.44
Case Congestion Rate	<=115%	155.03
Trial Date Certainty Rate	>=85%	73
Net Case Backlog Rate	<=5%	2.16
Gross Case Backlog Rate	<=10%	15.89
Average Number of Case management dates	<=3	4.57

If any court or jurisdiction can consistently achieve these rates, it will attain a high level of efficiency and service excellence, characteristic of high performing courts.

Methodology

Guaranteeing the reliability and validity of the data used to produce the periodic statistical reports for the Jamaican Courts is of utmost importance as we seek to produce a data driven enterprise for policymaking and operational decisions. As a result, a robust and verifiable system of data production has been created in both the parish courts and the Supreme Court. At the parish courts, a data capture system for criminal matters, called the CISS (Case Information Statistical System) has been operational in all courts for the past 9 years. This system captures a wide range of data on the progression of criminal cases from initiation to disposition and is manned by at least one dedicated Data Entry Officer in each court. The Data Entry Officers update the system on a daily basis so that the data produced is as close as possible to real time. The electronic data sheets for each parish court are then validated and backed-up to the network at the end of each month and the data submitted to a centralized, secure medium for processing by the Statistics Unit at the Supreme Court. A robust data validation mechanism is in place to periodically sample criminal case files in all parish courts on a quarterly basis. A representative sample of case files are taken in each case and crosschecked against the electronic data to detect and eliminate errors of omission and commission.

Monthly statistical data is processed using the data submissions, culminating in Quarterly Reports and eventually the Annual Report of this nature. All Quarterly and Annual Parish Court reports are published on the website of the Supreme Court; however, interim data required by stakeholders may be requested through the Office of the Chief Justice.

Disclaimer

The numbers that are reflected in the case activity summaries in the annual statistics report may vary slightly from those quoted in the individual quarterly reports throughout the year due to occasional constraints with timely access to all records and other mitigating factors. Methodological adjustments may also result in slight variations in comparative figures across periods. It should also be noted that there have been progressive improvements in the strength of the data collection mechanism in some courts such as the Clarendon Parish Court, which have positive measurement outcomes.

Chapter 1.0: Criminal Case Activity Statistics in the Parish Courts for the year ended December 31, 2025

This chapter provides an assessment of criminal case activity in the parish courts for the year ended December 31, 2025. This includes analysis of the criminal caseload, rates of case disposal, clearance and congestion as well as cases statuses in the various courts over the period, assessments of courtroom utilization rates, case file integrity rates, trial date certainty rates and forecasts of the core case activity outcomes for the upcoming year of 2026. This chapter also explores the common methods of disposition, reasons for court delay, leading charges and case types across the parish courts and associated conviction rates.

Table 1.01: Aggregate case statistics for each parish court for the year ended December 31, 2025

Parish Court	Number of new cases filed	Number of inactive cases	Number of disposed cases	Active Pending Case Load	Case disposal Rate (%)
Hanover	701	17	553	131	81.31
St. Catherine	2646	114	1860	672	74.60
Westmoreland	1921	127	1050	744	61.27
St. Mary	838	22	588	228	72.79
Clarendon	1365	107	811	447	67.25
Portland	1085	63	710	312	71.24
St. Elizabeth	804	27	543	234	70.90
Corporate Area Criminal	4725	747	2316	1662	64.83
St. Thomas	753	47	477	229	69.59
St. James	1844	221	1268	355	80.75
St. Ann	1428	238	828	362	74.65
Trelawny	875	72	515	288	67.09
Manchester	1466	108	840	518	64.67
Total	20451	1910	12359	6182	-
Average/Weighted Average	1573.15	146.92	950.69	475.54	69.77
Standard deviation	1104.78	193.21	560.98	398.90	6.02
Skewness	2.20	2.86	1.64	2.48	0.36

Note: The case disposal rate for the Browns Town outstation for 2025 is 62.92%

The table above shows the aggregate case statistics for each parish court for the 2025 calendar year. A total of 20,451 new criminal cases were filed across the parish courts while 14,269 of these cases were either disposed or became inactive during the period, resulting in a weighted average case disposal rate of 69.77%. In the corresponding period in 2024, 20,459 cases were filed, while 15,280 cases were either disposed or became inactive which resulted in a weighted average disposal rate of 74.69%, which is 4.92 percentage points more than the rate for the 2025 calendar year. This comparison reveals that there was a decrease of 8 cases or a 0.04% decrease in the number of new cases filed and a decrease of 1,011 cases or a 6.62% decrease in the number of new cases disposed or became inactive when compared to the 2024 calendar year. Of the thirteen parish courts listed above, six (6) Parish Courts recorded a decrease in the number of new cases filed, while seven (7) recorded an increase. Among the parish courts with the largest decline in new cases filed were the Clarendon Parish Court, decreasing by 17.92%, the St. Ann Parish Court, which decreased by 15.25% and the Corporate Area Parish Court – Criminal Division, which decreased by 4.27%. Among the parish courts with the largest improvement in new cases filed were the St. Thomas Parish Court, increasing by 27.84%, the Portland Parish Court, which increased by 25.58% and the St. Mary Parish Court, which experienced an increase of 16.71%.

The Corporate Area Parish Court-Criminal Division with 4,725 cases or 23.10% of the new cases filed, the St. Catherine Parish Court with 2,646 cases or 12.94% and the Westmoreland Parish Court with 1,921 or 9.39% accounted for the three largest shares of new cases filed in the 2025 calendar year. These three parish courts with the largest share of new cases filed, cumulatively accounted for 45.44% of the total sample of new criminal cases filed in the 2025 calendar year. On the other end, the parish courts of Hanover with 701 cases or 3.43% of the new cases, St. Thomas with 753 cases or 3.68% and St. Elizabeth with 804 cases or 3.93%

accounted for the lowest shares of new cases filed in the 2025 calendar year. The best performing courts in relation to case disposal rates for the 2025 calendar year were the Hanover (81.31%), St. James (80.75%) and St. Ann (74.65%) Parish Courts. The bottom three courts on this measure were the Westmoreland (61.27%), Manchester (64.67%) and Corporate Area (64.83%) parish courts. The parish court of Manchester was also among the bottom three courts on this measure in the 2024 calendar year. The skewness of the number of new cases filed, the number of cases disposed, and the active pending new caseload are all positive, which is an indication that the larger proportion of the courts fell below the overall average case count in each of these data series. The overall skewness of the case disposal rates is a low positive figure, which indicates that a large proportion of courts had disposal rates which were close to the overall average rate for the year.

Refer to Table 1.04 for a graphical comparison of the Case Disposal Rates across all Parish Courts for 2024 and 2025.

Table 1.02a: Aggregate case statistics for each parish court as at December 31, 2025

Parish Court	Number of new cases filed in year	Number of Disposed cases in Jan. 1- Dec. 31, 2025	Number of Inactive cases in Jan. 1- Dec. 31, 2025	Grand total number of inactive cases (2016- Dec. 2025)	Grand total number of disposed cases (2016- Dec. 2025)	Grand Active Pending Caseload b/f Jan. 1, 2025	Case Clearance Rate (%)	Case Congestion Rate (%)
Hanover	701	626	19	294	7776	70	92.01	119.53
St. Catherine	2646	3168	168	3090	29426	777	126.08	102.61
Westmoreland	1921	1431	161	1460	45372	496	82.87	151.82
St. Mary	838	825	27	416	8502	236	101.67	126.06
Clarendon	1365	1165	129	1984	15055	496	94.80	143.82
Portland	1085	1279	75	476	10232	455	124.79	113.74
St. Elizabeth	804	628	30	972	9141	779	81.84	240.58
Corporate Area Criminal	4725	4276	852	19374	66887	5371	108.53	196.88
St. Thomas	753	657	63	679	7430	477	95.62	170.83
St. James	1844	1558	245	3047	20879	427	97.78	125.96
St. Ann	1428	1270	292	4928	13771	1131	109.38	163.83
Trelawny	875	809	102	956	8017	436	104.11	143.91
Manchester	1466	1155	144	1806	13245	1194	88.61	204.77
Total	20451	18847	2307	39482	255733	12345	-	-
Average/Weighted Average	1573.15	1449.77	177.46	3037.08	19671.77	949.62	103.44	155.03
Standard deviation	1104.78	1078.76	218.96	5088.34	17878.74	1366.25	13.96	40.33
Skewness	2.20	2.00	2.77	3.19	1.97	3.27	0.61	0.85

Note 1: The figures are computed for the period since the use of the CISS system commenced in August 2016. Not all courts commenced at the same time, so the exact times vary but are long enough to make statistically significant inferences.

Note 2: The grand total number of active cases from 2016 to the year ended December 31, 2025, for all parish courts combined = 13,404

Note 3: The case clearance rate for the Browns Town outstation in St. Ann for the 2025 calendar year is 96.61% and the case congestion rate is 308.65%.

The table above is an extension of table 1.01. Among the critical performance measures reported in this table is the case congestion rate across the parish courts. This provides a measure of manageability of a court's existing caseload. In particular, it provides an indication of the caseload burden relative to existing resources and the pace of case clearance. As an

empirical measurement of case carriage load, the case congestion rate is more meaningful over longer period, typically a year or more; hence, the quarterly results are to be interpreted in a guarded way.

The weighted average case congestion rate among the parish courts in the 2025 calendar year was 155.03%, an indication that the parish courts (criminal division) as a whole are carrying roughly 55% more than the caseload that their current rate of clearance and implied state of resources justifies. This result represents a 12.82 percentage points increase when compared to the 2024 calendar year. The St. Elizabeth Parish Court (240.58%) and the parish courts of Manchester (204.77%), Corporate Area- Criminal Division (196.88%) and St. Thomas (170.83%) were the courts with the highest case congestion rates in the 2025 calendar year. The St. Ann (163.83%) and Westmoreland (151.82%) Parish Courts rounded off the top 6 most case congested courts in the 2025 calendar year. The parish courts of St. Elizabeth, Manchester, Corporate Area-Criminal Division, St. Thomas and St. Ann were also among the most congested courts in the comparative 2024 calendar year. The parish courts of St. Catherine (102.61%), Portland (113.74%), and Hanover (119.53%) performed best on this measure. As with previous reports, variations in caseload and resources do not appear to be a major factor explaining the variances in performance on this measure as some of the courts ranking on either ends of the scale are the larger courts in the island and resource endowment do not vary in a statistically way among the courts. The case congestion rate is a more meaningful measurement over a full year.

The results on the overall case clearance rate for the 2025 calendar year provide interesting insights into the court-wide progress being made on this measure. The overall weighted average case clearance rate of 103.44%, which is a decrease of 2.11 percentage points when compared to the corresponding 2024 calendar year, however, the performance meets the

international standard of 90%-110. This overall case clearance rate of 103.44% suggests that for every 100 new cases filed, roughly 103 cases were disposed. Ten (10) parish courts met or exceeded the international standards of 90%-110%. The parish courts of St. Catherine (126.08%), Portland (124.79%), St. Ann (109.38%), Corporate Area Criminal (108.53%) and Trelawny (104.11%) were the leading parish courts on this measure. The parish courts of St. Elizabeth (81.84%), Westmoreland (82.87%) and Manchester (88.61%) had the lowest criminal case clearance rates for the year. Six (6) parish courts recorded an increase in clearance rates when compared to 2024 calendar year, while seven (7) parish courts recorded a decrease in clearance rates when compared to the 2024 calendar year. The Portland and Manchester parish courts saw the largest gains, with 21.90 and 20.18 percentage points improvement respectively. The St. Mary and St. Elizabeth parish courts saw the largest decline, with 60.45 and 39.54 percentage points decline respectively. The data in the table above were positively skewed to various degrees, indicating that for the most part, proportionately more of the scores in that data set fell below their respective series means. *Refer to Table 1.04 for further comparison of the case clearance rates and the case congestion rates across all parish courts for 2024 and 2025.*

Table 1.02b: Percentile rank on selected performance metrics for the criminal division of the parish courts for the year ended December 31, 2025

Parish Court	Percentile Rank - Case Disposal rate (%)	Percentile Rank - Case Clearance Rate (%)
Hanover	100	25
St. Catherine	75	100
Westmoreland	0	8
St. Mary	67	58
Clarendon	33	33
Portland	58	92
St. Elizabeth	50	0
Corporate Area Criminal	17	75
St. Thomas	42	42
St. James	92	50
St. Ann	83	83
Trelawny	25	67
Manchester	8	17

The table above provides the percentile ranks of the case disposal and case clearance rates for the 2025 calendar year. The percentile rank gives an indication of where particular courts falls on a metric relative to the other courts. The parish courts of Hanover (100%), St. James (92%) and St. Ann (83%) had the highest percentile ranks on case disposal rate for the 2025 calendar year, an indication that they performed better than the vast proportion of the courts on this measure. The percentile ranks of 100% for the Hanover Parish Court for example, means that they performed better than all the courts on case disposal rate in the year, while the St. James Parish Court performed better than 92% of the parish courts and the St. Ann Parish Court performed better than 83% of all the parish courts on this measurement. The parish courts of Westmoreland, Manchester and Corporate Area – Criminal Division had the lowest percentile rank on case disposal rate for the year. In terms of case clearance rates, the parish courts of St. Catherine (100%), Portland (92%) and St. Ann (83%) had the highest percentile ranks, while the parish courts of St. Elizabeth, Westmoreland and Manchester had the lowest.

Table 1.02c: Forecasted case activity statistics for the 2026 calendar year [January 01 - December 31, 2026]

Parish Court	Forecasted number of new cases	Forecasted number of disposed cases	Forecasted number of inactive cases	Forecasted case clearance rate (%)
Hanover	693	692	20	102.75
Manchester	1410	1197	127	93.93
St. Mary	777	846	32	113.01
St. James	1915	1828	234	107.71
St. Catherine	2855	3066	349	119.58
Portland	988	1051	75	113.85
St. Ann	1615	1374	408	110.36
St. Elizabeth	815	866	69	114.73
Corporate Area Criminal	4845	4293	1299	115.42
Westmoreland	1681	1383	141	90.68
St. Thomas	685	635	59	101.37
Clarendon	1501	1397	147	102.91
Trelawny	832	798	99	107.88
Total/Weighted Average	20612	19426	3061	109.10

Note: The forecasted case clearance rate for the Browns Town outstation in St. Ann for the 2026 calendar year is 102.75%

The above table forecasts core case activity for the criminal division of each parish court and overall for the 2026 calendar year. The forecasts are generated using the method of exponential smoothing which uses weighted averages from past observations with weights decaying exponentially as the observations get older. See further explanation of the mathematical science behind the method of exponential smoothing in the glossary of terms.

The above data shows that the overall forecasted case clearance rate for the criminal division of the parish courts for the 2026 calendar year is 109.10%, which would be 5.66 percentage points higher than that of the 2025 calendar year. All thirteen (13) parish courts are forecasted to satisfy the international standard on case clearance rate of 90% or more in the 2026 calendar year, led by the St. Catherine Parish Court with 119.58%, the Corporate Area Parish Court – Criminal Division with 115.42% and the St. Elizabeth Parish Court with 114.73%.

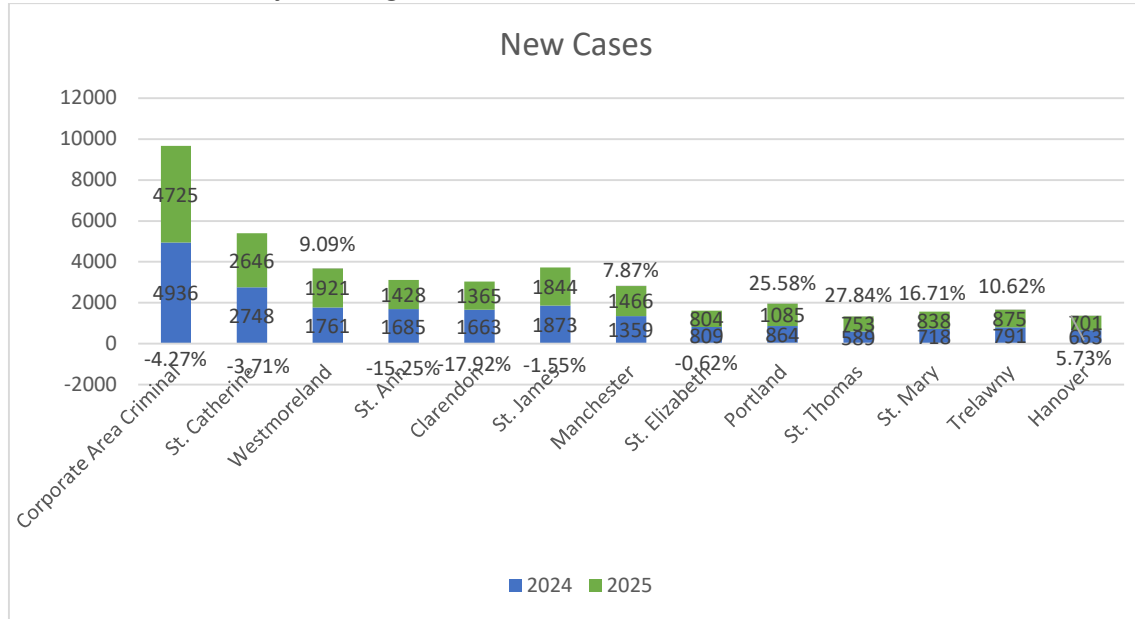
Table 1.02d: Sampling distribution of new cases filed per 10,000 population in the criminal division of the parish courts in the year ended December 31, 2025

Parish Court	Number of new cases filed	Population size in parish	Case per 10,000 population
Hanover	701	69780	100
St. Catherine	2646	542763	49
Westmoreland	1921	146205	131
St. Mary	838	116497	72
Clarendon	1365	258643	53
Portland	1085	84972	128
St. Elizabeth	804	153201	52
Corporate Area Criminal	4725	672904	70
St. Thomas	753	94485	80
St. James	1844	188656	98
St. Ann	1428	175310	81
Trelawny	875	77427	113
Manchester	1466	193694	76
Total	20451	2774538	74

The above table provides an outline of the number of new criminal cases filed per 10,000 population in the parish courts in the 2025 calendar year. The population sizes used are based on the last published national population census in 2022 and therefore, the data and represents the most recent current value. This kind of data provides interesting insights into the demand for adjudication in criminal matters in the various parishes. It is seen that the parish of Westmoreland, which is among the parishes with mid-range population sizes, and bigger caseloads, registered the largest number of new criminal cases filed per 10,000 population in the 2025 calendar year. Portland, which is among the parishes with a smaller population size and caseload and Trelawny, which is among the parishes with a smaller population size and caseload, followed. Equally interesting is the result that the St. Catherine Parish Court, which is among the parishes with the larger yearly caseload and population size, had the smallest number of new cases filed per 10,000 population in the year. The St.

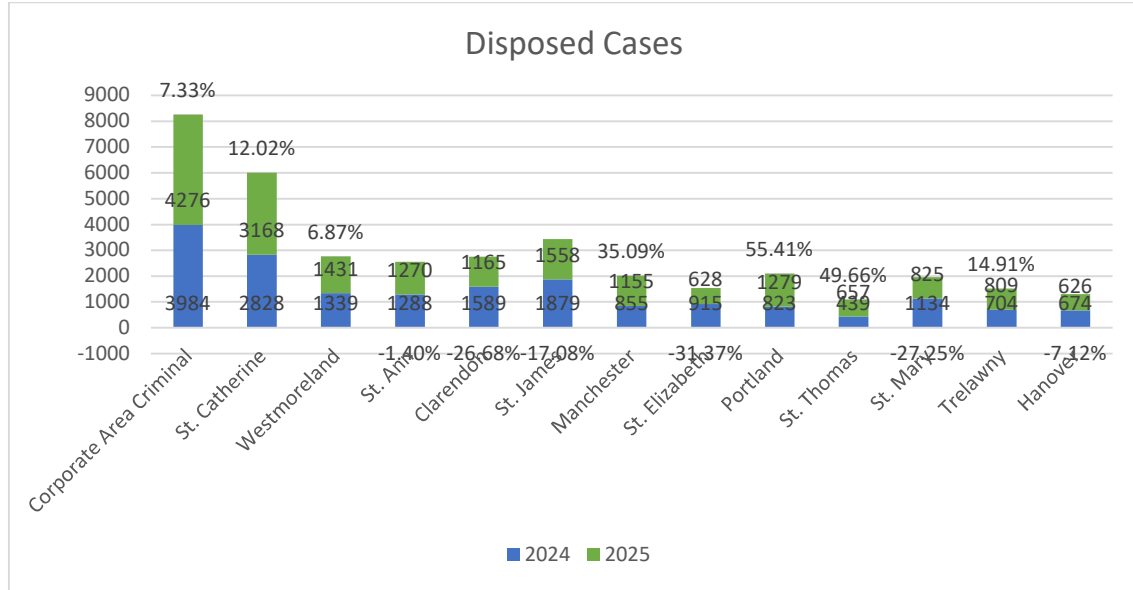
Elizabeth parish court had the second lowest number of new cases filed per 10,000 population for the year, followed by Clarendon.

Chart 1.01a: Summary of changes in the number of new cases filed in 2024 and 2025



The above chart provides a breakdown of the changes in the number of new cases filed in the 2024 and 2025 calendar years. It is seen that there has been a decrease in new cases filed over the comparative period six (6) parish courts and an increase in seven (7). Among the parish courts with the largest rise in new cases filed were the St. Thomas Parish Court increasing by 27.84% and the Portland Parish Court, which increased by 25.58%. The Clarendon Parish Court fell by 17.92% and the St. Ann Parish court fell by 15.25%.

Chart 1.01b: Summary of changes in the number of cases disposed in 2024 and 2025



The above graph provides a breakdown of the changes in the number of cases disposed in 2024 and 2025 calendar years. It is seen that there has been a decrease in cases resolved over the comparative period in six (6) parish courts and an increase in the cases resolved in seven (7) parish courts. Among the parish courts with the largest rise in cases resolved were the Portland Parish Court increasing by 55.41% and the St. Thomas Parish Court, which increased by 49.66%. Among the parish courts with the largest decline in cases resolved were the St. Elizabeth parish court fell by 31.37% and the St. Mary Parish court fell by 27.25%.

Table 1.02e: Sampling distribution of the Indices of Judge Productivity for the year ended December 31, 2025

Parish Court	Number of Judges	New criminal cases per Judges	Active pending caseload per Judge at the beginning of 2025	Active caseload per Judge at the end of 2025	Cases disposed per Judge
Hanover	2	350.50	35.00	63.00	313.00
St. Catherine	5	529.20	155.40	17.40	633.60
Westmoreland	3	640.33	165.33	275.00	477.00
St. Mary	3	279.33	78.67	74.00	275.00
Clarendon	3	455.00	165.33	189.00	388.33
Portland	2	542.50	227.50	93.00	639.50
St. Elizabeth	3	268.00	259.67	308.33	209.33
Corporate Area Criminal	9	525.00	596.78	552.00	475.11
St. Thomas	2	376.50	238.50	255.00	328.50
St. James	5	368.80	85.40	93.60	311.60
St. Ann	3	476.00	377.00	332.33	423.33
Trelawny	3	291.67	145.33	133.33	269.67
Manchester	3	488.67	398.00	453.67	385.00
Total/Weighted Average	46	444.59	268.37	253.09	409.72

The above table provides a distribution of the new cases filed per judge, the cases disposed per judge and the caseload per judge in the criminal division of the parish courts for the 2025 calendar year. The data reveals that the overall weighted average number of new criminal cases filed per judge in the 2025 calendar year is roughly 445 cases. The parish courts of Westmoreland (640 cases), Portland (543 cases) and St. Catherine (529 cases) had the three largest number of new cases filed per judge during the year. On the contrary, the parish courts St. Elizabeth (268 cases), St. Mary (279 cases) and the Trelawny Parish Court (292 cases) had the lowest number of new cases filed per judge in the year. In terms of cases disposed per judge, the Portland Parish Court disposed the most cases per judge in the year with 640 cases, followed by the St. Catherine Parish Court with 634 cases and the Westmoreland Parish Court with 477 cases disposed per judge. The three courts with the smallest number of cases

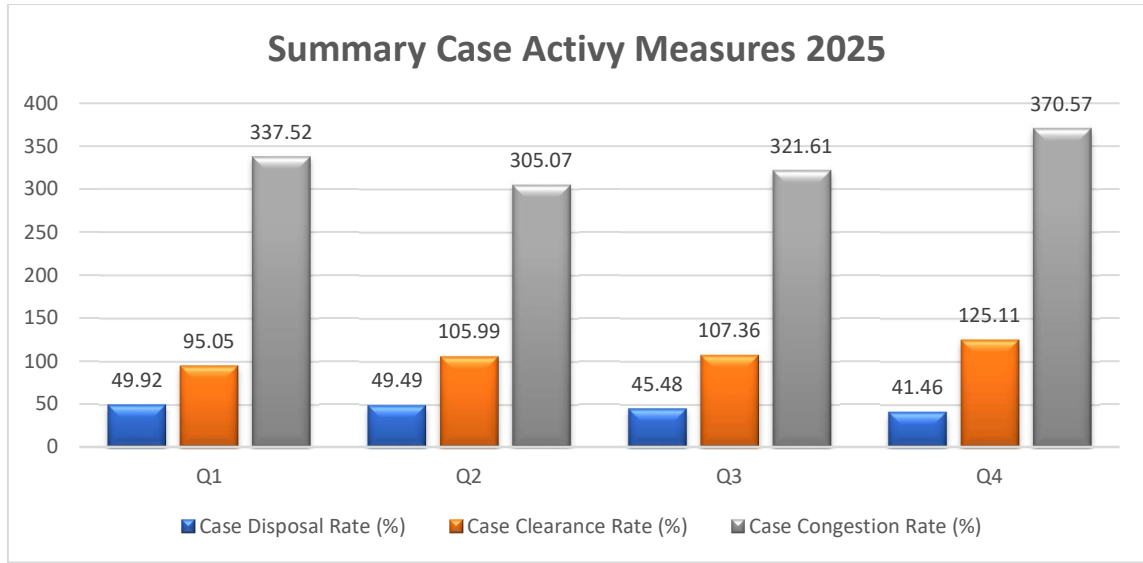
disposed per judge were the St. Elizabeth Parish Court and the Trelawny Parish Court with 209 and 270 disposed cases per judge respectively and the St. Mary Parish Court with 275 disposed cases per judge. The overall number of criminal cases disposed per judge was 410 cases. The most crucial of the indicators is the active caseload per judge at the end of the year. The data shows that the Corporate Area Parish Court – Criminal Division had the highest caseload per judge at the end of the year with 552 cases, followed by the Manchester Parish Court with 454 cases and the St. Ann with 332 cases per judge. On the lower end, the parish courts of St. Catherine and Hanover with 17 and 63 cases per judge respectively, had the lowest active criminal caseload per judge at the end of the year, followed by the St. Mary Parish Court with 74 active criminal cases per judge. The overall average active criminal caseload per judge at the end of the year is 253 cases. The active caseload is a proxy for the existing demand for judicial services in the respective courts and the anecdotal evidence suggests that some courts with a higher caseload per judge are generally more hard pressed to sustain high productivity rates.

Table 1.03: Aggregate summary case statistics for each parish court for the period Jan.-Dec. 2025

Statistical Measurements	Case Disposal Rate (%) Q4	Case Disposal Rate (%) Q3	Case Disposal Rate (%) Q2	Case Disposal Rate (%) Q1	Case Clearance Rate (%) Q4	Case Clearance Rate (%) Q3	Case Clearance Rate (%) Q2	Case Clearance Rate (%) Q1	Case Congestion Rate (%) Q4	Case Congestion Rate (%) Q3	Case Congestion Rate (%) Q2	Case Congestion Rate (%) Q1
Weighted Average	41.46	45.48	49.49	49.92	125.11	107.36	105.99	95.05	370.57	321.61	305.07	337.52
Standard Deviation	9.83	8.23	9.53	11.14	39.17	28.10	17.87	11.82	343.55	149.46	121.30	126.18
Skewness	-1.14	0.67	0.86	0.52	1.26	1.75	0.26	1.34	2.05	0.62	1.02	0.59

The above table provides a detailed quantitative summary of the progression of the key measures discussed so far, namely the case disposal rate, the case clearance rate and the case congestion rate across the four quarters of 2025 for all parish courts combined. A pictorial representation of this data follows.

Chart 1.2.01: Aggregate summary of selected case activity metrics over the four quarters of 2025



The above graph provides a summary of the progression of the overall case disposal, case clearance and case congestion rate over the four quarters of 2025 for all parish courts combined. It is seen that there was some number of fluctuations in the progression of all three metrics over the four quarters throughout the year. The overall case disposal rate varied within a band of a low of 41.46% in the fourth quarter and a high of 49.92% in the first quarter. The case clearance rate ranged from a low of 95.05% in the first quarter to 125.11% in the fourth quarter of 2025, while the case congestion rate was at its lowest in second quarter with 305.07% and at its highest in the fourth quarter with a rate of 370.57%.

Table 1.04: Aggregate summary case statistics for each parish court for 2024 and 2025

Parish Court	Case Disposal Rate (%) 2025	Case Disposal Rate (%) 2024	Change in case disposal rate (%)	Case Clearance Rate (%) 2025	Case Clearance Rate (%) 2024	Change in case clearance rate (%)	Case Congestion Rate (%) 2025	Case Congestion Rate (%) 2024	Change in case congestion rate (%)
Hanover	81.31	89.44	-8.13	92.01	103.62	-11.61	119.53	110.33	9.20
St. Catherine	74.60	77.51	-2.91	126.08	115.79	10.29	102.61	122.31	-19.70
Westmoreland	61.27	74.62	-13.35	82.87	87.34	-4.47	151.82	130.17	21.65
St. Mary	72.79	78.13	-5.34	101.67	162.12	-60.45	126.06	89.35	36.71
Clarendon	67.25	77.39	-10.14	94.80	103.73	-8.93	143.82	122.55	21.27
Portland	71.24	69.33	1.91	124.79	102.89	21.90	113.74	146.91	-33.17
St. Elizabeth	70.90	80.47	-9.57	81.84	121.38	-39.54	240.58	176.68	63.90
Corporate Area Criminal	64.83	75.87	-11.04	108.53	111.59	-3.06	196.88	156.41	40.47
St. Thomas	69.59	54.16	15.43	95.62	80.31	15.31	170.83	195.98	-25.15
St. James	80.75	87.03	-6.28	97.78	108.28	-10.50	125.96	113.95	12.01
St. Ann	74.65	71.57	3.08	109.38	100.42	8.96	163.83	161.82	2.01
Trelawny	67.09	65.61	1.48	104.11	100.63	3.48	143.91	148.62	-4.71
Manchester	64.67	53.42	11.25	88.61	68.43	20.18	204.77	224.41	-19.64
Average /Weighted Average	69.77	74.69	-4.92	103.44	105.55	-2.11	155.03	142.21	12.82
Standard Deviation	6.02	10.82		13.96	22.38		40.33	37.44	
Skewness	0.36	-0.66		0.61	1.06		0.85	0.65	

The table above provides a comparison of the case disposal rate, the case clearance rate and the case congestion rate for the 2024 and 2025 calendar years. The weighted average case disposal rate for the 2025 calendar year, is 69.77%, which is a 4.92 percentage points decrease when compared to the 2024 calendar year, which had a weighted average rate of 74.69%. The overall case clearance rate of 103.44% for the 2025 calendar year is 2.11 percentage points less the 105.55% recorded in the corresponding 2024 calendar year. The overall case congestion rate for the 2025 calendar year deteriorated, changing from 142.21% in the 2024 calendar year, to 155.03% in the 2025 calendar year, a 12.82 percentage point increase. Ceteris paribus, there should be a roughly inverse linear association between the case

clearance rates and the case congestion rate. This is more pronounced in the long run than in the short or medium terms.

Chart 1.2.02a: Comparison of case disposal rates across the parish courts for 2024 and 2025

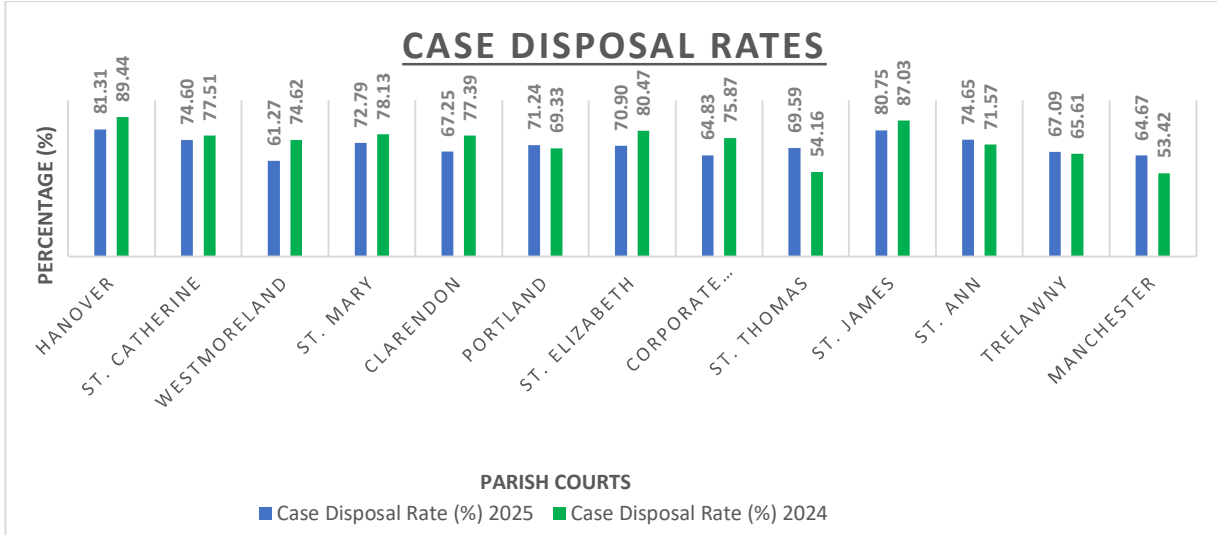


Chart 1.2.02b: Comparison of case clearance rates across the parish courts for 2024 and 2025

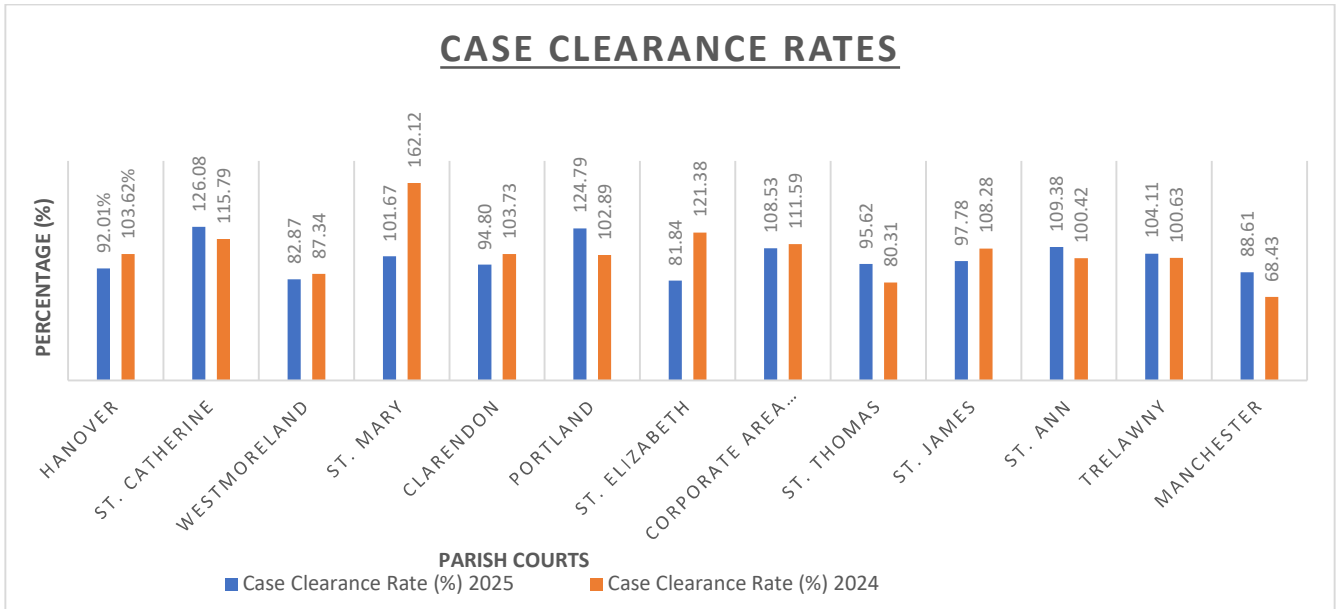


Chart 1.2.02c: Comparison of case congestion rate across the parish courts for 2024 and 2025

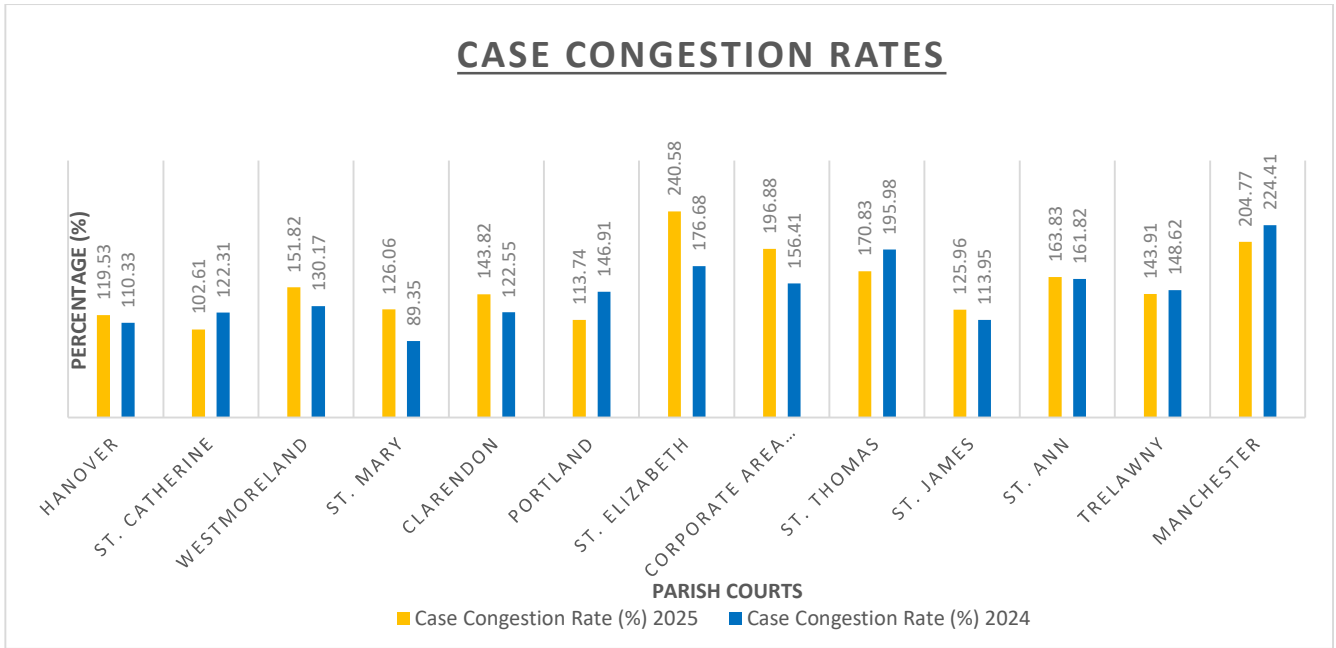


Table 1.05a: Sampling distribution of case management date activity for cases disposed in the year ended December 31, 2025

Parish Court	Overall number of cases disposed	Number of cases disposed in 1 case management date	Number of cases disposed in 2 management dates	Number of cases disposed in 3 management dates	Number of cases disposed in 4 management dates	Number of cases disposed in 5 management dates	Number of cases disposed in 6-10 management dates	Number of cases disposed in more than 10 management dates
Hanover	626	92	50	28	12	7	5	-
St. Catherine	3168	1498	498	290	167	101	250	59
Westmoreland	1431	623	268	161	111	63	131	55
St. Mary	825	157	106	77	52	28	86	14
Clarendon	1165	377	241	135	102	65	105	21
Portland	1279	446	241	134	100	63	129	46
Corporate Area Criminal	4276	1528	1215	377	276	194	408	265
St. Thomas	657	269	105	70	47	27	43	9
St. James	1558	840	214	142	123	71	74	-
St. Ann	1270	556	205	81	68	34	48	7
Trelawny	809	149	83	53	43	31	73	25
Manchester	1155	498	249	160	110	49	74	7
Mean	1518.25	586.08	289.58	142.33	100.92	61.08	118.83	50.80
Median	1217.50	472.00	227.50	134.50	101.00	56.00	80.00	23.00
Skewness	1.93	1.23	2.69	1.39	1.44	1.98	1.98	2.80
Standard Deviation	1096.82	483.97	314.41	100.89	69.63	48.94	109.62	77.80
Total	18219	7033	3475	1708	1211	733	1426	508

The above sampling distribution provides critical insights into case management date activity for a representative sample of criminal cases disposed across the parish courts over the 2025 calendar year. In general, the fewer the number of case management dates per case, the more efficient the case flow progression. A maximum of five case management dates per case is considered to be desirable based on international best practices. It is noted that 11.66% of the sample of 18,219 cases disposed during the period were resolved on their first appearance before the court. A further 38.60% of the sample of cases disposed were resolved after 1 case management date, while 19.07% were resolved after 2 case management dates and 9.37% after 3 case management dates. Cumulatively, roughly 89.38% of the cases sampled were resolved in five or less case management dates, inclusive of those resolved on first appearance before the courts. This is an impressive outcome by any measure. Although there are some variances across the parish courts, the overall outcomes were consistently observed for all courts. In other words, the vast majority of the cases sampled were disposed in five or less case management appearance in all courts and matters disposed on first appearance before the court or within the first few appearances accounted for the largest share of the activity across the courts. These outcomes are not surprising given the consistently high case clearance rates in the parish courts in the last few years. These collective results augur well for the probability of relatively quick and efficient resolution of criminal cases across the parish courts.

Table 1.05b: Summary of cases heard during the year ended December 31, 2025

Parish Court	Number of cases heard in the year	Share of cases heard in the year (%)
Clarendon	1896	6.49
Corporate Area-Criminal Division	7687	26.30
Hanover	776	2.65
Manchester	1920	6.57
Portland	1751	5.99
St. Ann	1997	6.83
St. Catherine	4193	14.34
St. Elizabeth	927	3.17
St. James	2195	7.51
St. Mary	1098	3.76
St. Thomas	1009	3.45
Trelawny	1293	4.42
Westmoreland	2489	8.51
Total/Weighted Average	29231	100.00

The table above provides a summary of the criminal cases heard during the 2025 calendar year at the parish courts. From a sample of 29,231 cases heard, it is seen that the Corporate Area Criminal court accounted for the highest share of cases heard with 7,687 cases heard or 26.30% of the sample, followed by the St. Catherine Parish Court with 4,193 cases heard or 14.34% and the Westmoreland parish court with 2,489 cases or 8.51% of the sample. Cumulatively, the top three courts account for roughly 49.15% of the cases sampled. On the lower end, the parish courts of Hanover with 776 cases or 2.65%, St. Elizabeth with 927 or 3.17% and St. Thomas with 1,009 or 3.45% of the sample, accounted for the lowest share of cases heard in the 2025 calendar year.

Table 1.06a: Comparison of the trial certainty rates for 2024 and 2025

Parish Court	Trial certainty rate (%) 2025	Trial certainty rate (%) 2024	Change in the trial certainty rate (%)
Westmoreland	51	65	-14
Clarendon	48	48	0
St. Ann	93	100	-7
Portland	99	95	4
St. James	93	100	-7
Manchester	95	99	-4
St. Catherine	44	56	-12
St. Elizabeth	81	91	-10
Trelawny	60	57	3
St. Mary	69	65	4
St. Thomas	72	66	6
Corporate Area Criminal	86	84	2
Hanover	63	74	-11
Total/Average	73	77	-4

Note: The trial date certainty rate for the Browns Town Outstation in St. Ann for 2025 is 100%

The trial date certainty rate provides a measure of the extent to which dates, which are set for trial, proceed on schedule without being delayed to start at some future date. The overall trial date certainty rate for the 2025 calendar year was 73%, a 4-percentage points decline when compared to the 2024 calendar year. Four (4) of the parish courts met the prescribed international performance standard of a rate between 92% and 100% in the year. Leading the way are the parish courts of Portland and Manchester with an estimated trial certainty rate of 99% and 95% respectively, followed by St. Ann and St. James with 93% each. The Corporate Area Parish Court fell just short of the international standard with a trial certainty rate of 86%, but this was still a promising result. The minimum-targeted court-wide trial date certainty rate which has been set out by the Honourable Chief Justice for the judiciary is 95%. This is consistent with the push to significantly enhance the efficiency of the court system and hence the timely delivery of

justice to the Jamaican citizenry. The attainment of this minimum threshold rate will assist in sustaining the current net case backlog rate of less than 5%.

Table 1.06b: Percentile Rank on trial date certainty rate for the criminal division of the parish courts in 2024 and 2025

Parish Court	Percentile Rank – Trial Date Certainty Rate 2025 (%)	Percentile Rank – Trial Date Certainty Rate 2024 (%)
Westmoreland	17	25
Clarendon	8	0
St. Ann	75	92
Portland	100	75
St. James	75	92
Manchester	92	83
St. Catherine	0	8
St. Elizabeth	58	67
Trelawny	25	17
St. Mary	42	25
St. Thomas	50	42
Corporate Area Criminal	67	58
Hanover	33	50

The above table provides a summary of the percentile rank of the various parish courts with regards to their performances on the trial date certainty rates for the 2024 and 2025 calendar years. The results present a mixed picture across both years for most courts in terms of the relative performances on this measurement. Some courts experienced gains in the ranking and several others experienced declines, while some courts remained the same. There were, however, no dramatic changes in ranking for any court over the comparable period.

Table 1.06c: Average duration from first trial date set to date of disposal of case for matters resolved by trial in the year ended December 31, 2025

Parish Court	Average duration of trial
Clarendon	434.26
Corporate Area	495.85
Hanover	92.63
Manchester	153.55
Portland	896.11
St. Ann	305.89
St. Catherine	529.13
St. James	198.18
St. Mary	280.81
St. Thomas	293.93
Trelawny	255.79
Westmoreland	389.34
Weighted average	418.01
Standard Deviation	214.38

The above table summarizes the average durations between first trial date set and the date of case disposal for trial matters resolved in the 2025 calendar year across the various parish courts. The data shows an overall weighted average interval between the first trial date set and the disposition of such cases in the year is 418 days or roughly 13.9 months, with a standard deviation of roughly 214 days or 7.1 months. The Hanover and Manchester Parish Courts had the lowest times between first trial dates set and disposal of cases with roughly 93 days and 154 days respectively, reflective of more ideal standards when compared to most other courts. The Portland, and St. Catherine Parish Courts with average interval times of roughly 896 days or 29.9 months and 529 days or roughly 17.6 months respectively had the worst ranks on this measurement for the year. Lengthy time intervals between the first trial date and the date of case disposition are symptoms of case management problems, case readiness and possibly even scheduling and calendar management issues in the particular court.

Table 1.06d: Time interval between major events for cases that had a trial date in the year ended December 31, 2025

Parish Court	Average time between filing and first court appearance (in days)	Average time between first court appearance and trial (in days)	Average time between trial and disposition (in days)
Clarendon	5.22	252.02	434.26
Corporate Area-Criminal Division	5.46	476.69	495.85
Hanover	13.91	81.07	92.63
Manchester	7.45	207.65	153.55
Portland	9.94	281.77	896.11
St. Ann	9.92	377.11	305.89
St. Catherine	5.03	244.00	529.13
St. James	4.89	777.21	198.18
St. Mary	4.77	119.89	280.81
St. Thomas	8.08	267.72	293.93
Trelawny	5.15	214.58	255.79
Westmoreland	6.05	443.01	389.34
Weighted average	6.13	385.18	418.01
Standard Deviation	2.85	187.48	214.38

Note 1: The average time between filing a case and the first court appearance for the Browns Town Outstation in St. Ann for 2025 is 11.57 days.

Note 2: The average time between the first appearance and first trial date for the Browns Town Outstation in St. Ann for 2025 is 545.81 days.

Note 3: The average duration between the first trial date set and the date of disposition for the Browns Town Outstation in St. Ann for 2025 is 402.26 days.

Tracking the times between the occurrence of major hearing events along the case flow continuum is important to establishing precise points of possible delay in case progression. The above table provides a summary of the average times between filing a case and the first court appearance, the average time between first court appearance and the first date of trial and the average duration between the first trial date and disposition. Overall, it is seen that the average time between filing a criminal case and the first court appearance is approximately 6 days, while

the overall average time between first appearance of a criminal matter in the parish courts and the first trial date is, however, much longer at roughly 12.8 months or 385 days. The average duration between the first trial date set and the date of disposition is roughly 13.9 months or 418 days. These findings indicate that there may be imprecisions in the science of scheduling trial dates which may at times face long delays after a first date set is postponed. Since roughly less than a quarter of criminal cases filed in the parish courts will proceed to trial, these findings may not have a dramatic impact on the overall time to disposition of criminal cases but are nonetheless critical for monitoring case activity.

Table 1.06e: Trial court activity summary during the year ended December 31, 2025

Parish Court	Number of cases heard	Number of cases with a trial date set	Percentage of cases heard which had a trial date set (%)
Clarendon	1896	311	16.40
Corporate Area-Criminal Division	7687	1057	13.75
Hanover	776	151	19.46
Manchester	1920	442	23.02
Portland	1751	159	9.08
St. Ann	1997	401	20.08
St. Catherine	4193	841	20.06
St. Elizabeth	927	80	8.63
St. James	2195	284	12.94
St. Mary	1098	166	15.12
St. Thomas	1009	106	10.51
Trelawny	1293	288	22.27
Westmoreland	2489	184	7.39
Total/Weighted Average	29231	4470	15.29

Note 1: The Browns Town Outstation in St. Ann had 8.89% of cases heard proceed to trial in 2025

Note 2: Calculations for the Corporate Area Court-Criminal Division were done using data available from sheets in which a trial date was listed from 2017 onwards, hence, the total number of cases heard may differ from the number of cases heard listed in table 1.04b.

The above table provides a summary of number of cases heard in the 2025 calendar year in the criminal divisions of the parish courts which had trial dates set, whether in the current year, from the previous year or a future date. Using a sampling distribution, it is seen that of 29,231 criminal cases heard across the parish courts in the 2025 calendar year, 4,470 cases or 15.29% had a trial date set. The parish courts of Westmoreland (7.39%), St. Elizabeth (8.63%) and Portland (9.08%) had the lowest proportion of cases proceeding to trial, while the parish courts of Manchester (23.02%), Trelawny (22.27%) and St. Ann (20.08%) had the highest proportions.

Table 1.07a: Distribution of courtroom utilization rates across the Parish Courts of Jamaica for the year ended December 31, 2025

Parish Court	Average overall courtroom utilization rate (%)	Highest recorded courtroom utilization rate (%)	Lowest recorded courtroom utilization rate (%)	Standard deviation of the courtroom utilization rate (%)	Average courtroom utilization rate for Night Court sittings (%)	Average number of courtroom adjournments per day
St. Catherine	76.09	164.44	3.89	27.86	81.96	1.00
Westmoreland	74.50	156.67	1.67	33.02	NA	NA
Trelawny	65.63	143.33	0.67	30.54	NA	1.00
St. Thomas	59.09	140.28	15.28	23.81	NA	4.00
St. Mary	75.18	150.00	5.00	30.66	NA	1.00
St. James	56.03	149.72	2.78	26.25	NA	1.08
Corporate Area Criminal Court	76.17	205.00	1.33	30.08	66.81	1.13
St. Ann	65.63	226.39	2.78	29.04	78.47	1.00
Portland	58.22	158.33	1.39	26.56	NA	1.00
Hanover	50.90	137.22	0.83	30.40	NA	1.00
Clarendon	71.26	228.61	13.33	41.57	76.08	1.00
Manchester	64.00	153.06	1.00	30.83	NA	NA
Overall Averages	66.06	167.75	4.16	30.05	75.83	1.32
Standard Deviation	8.68	32.88	4.93	4.41	6.48	0.94
Skewness	-0.30	1.22	1.79	1.53	-1.19	3.15

Note: The courtroom utilization rate for the Browns Town Outstation in St. Ann for 2025 is 64.91%

The above table details the courtroom utilization rate for the various parish courts in the 2025 calendar year. The courtroom utilization rate provides a measurement of the proportion of available hours for open court hearings in all courtrooms (including outstations) which are actually utilized. If the usage of any courtroom exceeds the available hours, then the utilization rate will exceed 100% and the rate will fall below 100% if less than the available hours are utilized.

The prescribed international standard for the courtroom utilization rate is 100%, which means

that all hours allocated for court hearings in any court, on any given day should be utilized. The data suggests that as a whole, the parish courts of Jamaica performed below this level in the 2025 calendar year. The overall average courtroom utilization rate across the parish courts in the year was 66.06%, which is an indication that on average roughly 66% of the available hours for court hearings were utilized across the parish courts in the 2025 calendar year. This result is roughly 0.60 percentage points above the figure for the corresponding period in 2024. The parish courts recording the highest courtroom utilization rates for the year are the Corporate Area Parish Court- Criminal Division and St. Catherine Parish Courts with 76.17% and 76.09% respectively, followed by the St. Mary Parish Court with 75.18% and the Westmoreland Parish Court with 74.50%. The Hanover Parish Court and St. James Parish Courts with 50.90% and 56.03% respectively, had the lowest rates, while the Portland Parish Court with 58.22% had the next lowest rate. It is quite commendable that all parish courts exceeded a courtroom utilization rate of 50% for the year. The standard deviation of the courtroom utilization rates was relatively low, suggesting that on average the rates for the individual courts did not vary widely from the overall mean. The negative skewness of the data suggests that proportionately more of the sample are clustered around the overall mean.

NB: The sample size of days used to compute the rates for each court were sufficiently large and representative, though not the same for all courts. The margin of error of the courtroom utilization rates is a reliable $\pm 2.5\%$.

Table 1.07b: Percentile Rank on Courtroom utilization rate for the criminal division of the parish courts in the year ended December 31, 2025

Parish Court	Percentile rank 2025 (%)	Percentile rank 2024 (%)
St. Catherine	91	91
Westmoreland	73	55
Trelawny	45	36
St. Thomas	27	0
St. Mary	82	100
St. James	9	45
Corporate Area Criminal Court	100	82
St. Ann	45	27
Portland	18	18
Hanover	0	9
Clarendon	64	73
Manchester	36	64

The above table provides a summary of the percentile rank of the various parish courts with regards to their performances on the courtroom utilization rates for the 2024 and 2025 calendar years. The results present a relatively consistent picture across both years for most courts in terms of the performances on this measurement. Some courts experienced gains in the ranking, several others experienced declines, and some courts retained the same ranking. The Corporate Area Parish Court - Criminal Division performed better than all courts in the 2025 calendar year and the St. Mary Parish Court performed better than all courts in the 2024 calendar year. The Hanover Parish Court had the lowest courtroom utilization rate in the 2025 calendar year and the St. Thomas Parish Court with the lowest rate in the 2024 calendar year.

Table 1.08: Types of matters for each Parish Court for the year ended December 31, 2025

Parish Court	Indictment	Summary Matters	Lay Magistrates Sittings	Committal Proceedings	Tax	Miscellaneous	LRF	Traffic	NS	Total
Corporate Area Criminal	4583	2489	640	1237	-	-	-	48	-	8997
St. Catherine	2502	929	735	727	37	-	52	-	-	4982
Manchester	935	410	624	268	16	1	51	-	-	2305
St. James	1049	817	505	202	103	111	-	-	-	2787
St. Ann	860	559	437	318	2	-	9	-	-	2185
Westmoreland	1191	950	387	337	6	-	-	-	-	2871
Clarendon	940	711	236	293	-	-	-	-	-	2180
Portland	665	790	157	67	-	-	28	-	-	1707
St. Mary	549	304	163	491	-	-	-	-	-	1507
Trelawny	537	328	192	155	17	-	53	-	-	1282
Hanover	475	169	225	124	-	-	37	-	-	1030
St. Thomas	522	390	166	132	-	-	10	-	-	1220
St. Elizabeth	626	404	103	151	-	-	-	-	-	1284
Total	15434	9250	4570	4502	181	112	240	48	0	34337
Percentage	44.95	26.94	13.31	13.11	0.53	0.33	0.70	0.14	0	100

***Total number of observations = 34,337**

****LRF means Law Reform Fraudulent Transaction, ***NS means not stated**

The above table provides a breakdown of the different types of new charges filed in each parish court for the 2025 calendar year. For the year, 34,337 charges were filed across the parish courts, a decrease of approximately 136 charges or a 0.39% decline when compared to the corresponding 2024 calendar year. The largest proportions of these charges were filed in the Corporate Area Court – Criminal Division (8,997), the St. Catherine Parish Court (4,982), the Westmoreland Parish Court with (2,871) and the St. James Parish Court with 2,787 charges. The largest share of the charges were Indictments (44.95%); followed by summary matters (26.94%),

Lay Magistrates' matters (13.31%) and committal proceedings with 13.11% of the total sample. The Corporate Area Court-Criminal Division accounted for the largest proportion of Indictments filed, followed by the parish courts of St. Catherine, Westmoreland and St. James. The Corporate Area Parish Court – Criminal Division accounted for the largest share of summary matters filed, followed by the Westmoreland Parish Court and the St. Catherine Parish Court. The largest proportion of Lay Magistrates' matters was filed at the St. Catherine Parish Court, followed by the parish courts of Corporate Area – Criminal Division and Manchester. The Corporate Area Parish Court – Criminal Division, followed by the St. Catherine Parish Court and the St. Mary Parish Court accounted for the largest individual shares of Committal Proceedings in the year. As for criminal matters, which are traffic related, the only incidences of these in the year were in the Corporate Area Parish Court – Criminal Division.

Offence Types

Table 1.09.01: Distribution of the most frequently occurring charges filed at the Hanover Parish Court-Criminal Division in the year ended December 31, 2025

Offence	Frequency	Percentage (%)
Assault occasioning bodily harm	151	14.79
Unlawful wounding	126	12.34
Threat	117	11.46
Malicious destruction of property	83	8.13
Possession of offensive Weapon	42	4.11
Sub-total	519	50.83

Number of observations sampled (N): 1,021

The above table shows the sampling distribution of the five (5) most commonly occurring charges filed at the Hanover Parish Court for the 2025 calendar year. It is shown that assault occasioning bodily harm with 151 or 14.79%, unlawful wounding with 126 or 12.34% and threat with 117 or 11.46% of the total sample of charges are the most frequently occurring charges. Malicious destruction of property with 83 or 8.13% followed this, while possession of offensive weapon with 42 or 4.11% of the total sample rounds off the top five. The five charges quoted above account for an estimated 50.83% of the total sample of 1,021 charges filed in the year. The top five most frequently occurring charges recorded in the 2024 calendar year in the Hanover Parish Court included assault occasioning bodily harm, unlawful wounding, malicious destruction of property, threat, and possession of identity information.

Table 1.09.02: Distribution of the most frequently occurring charges filed at the Manchester Parish Court-Criminal Division in the year ended December 31, 2025

Offence	Frequency	Percentage (%)
Assault occasioning bodily harm	291	12.62
Unlawful wounding	221	9.59
Exposing goods for sale	214	9.28
Malicious destruction of property	128	5.55
Threat	137	5.94
Sub-total	991	42.99

Number of observations sampled (N): 2,305

The above table shows the sampling distribution of the five (5) most commonly occurring charges filed at the Manchester Parish Court for the 2025 calendar year. It is shown that assault occasioning bodily harm with 291 or 12.62% of the total sample of charges is the most frequently occurring charge. Unlawful wounding with 221 or 9.59%, exposing goods for sale with 214 or 9.28% and malicious destruction of property with 128 or 5.55% rank next. The top five is rounded off by threat with 137 or 5.94% of the sample charges. The five charges quoted above accounts for an estimated 42.99% of the total sample of 2,305 charges filed at the Manchester Parish Court in the year. The top five most frequently occurring charges recorded in the 2024 calendar year in the Manchester Parish Court included breach of the threat, possession of offensive weapon, assault occasioning bodily harm, unlawful wounding and exposing goods for sale.

Table 1.09.03: Distribution of the most frequently occurring charges filed at the Portland Parish Court-Criminal Division in the year ended December 31, 2025

Offence	Frequency	Percentage (%)
Assault occasioning bodily harm	197	11.57
Possession of offensive weapon	168	9.86
Unlawful wounding	139	8.16
Threat	115	6.75
Smoking in a Public Place	108	6.34
Sub-total	727	42.69

Number of observations sampled (N): 1,703

The above table shows the sampling distribution of the five (5) most commonly occurring charges filed at the Portland Parish Court in the 2025 calendar year. It is shown that assault occasioning bodily harm with 197 or 11.57% of the total sample of charges is the most frequently occurring charge. Possession of offensive weapon with 168 or 9.86% and unlawful wounding with 139 or 8.16% ranked next. The top five is rounded off by threat with 115 or 6.75% and smoking in a public place with 108 or 6.34% of the sample of charges. The five charges quoted above account for an estimated 42.69% of the total sample of 1,703 charges filed in the year. The top five most frequently occurring charges recorded in the 2024 calendar year in the Portland parish court included assault occasioning bodily harm, unlawful wounding, threat, malicious destruction of property and possession of offensive weapon.

Table 1.09.04: Distribution of the most frequently occurring charges filed at the St. Ann Parish Court-Criminal Division in the year ended December 31, 2025

Offence	Frequency	Percentage (%)
Threat	334	15.46
Assault occasioning bodily harm	248	11.48
Unlawful wounding	209	9.68
Possession of offensive weapon	80	3.70
Malicious destruction of property	76	3.52
Sub-total	947	43.84

Number of observations sampled (N): 2,160

The above table shows the sampling distribution of the five (5) most commonly occurring charges filed at the St. Ann Parish Court in the 2025 calendar year. It is shown that threat with 334 or 15.46% of the total sample of charges is the most frequently occurring charge. Assault occasioning bodily harm with 248 or 11.48% and unlawful wounding with 209 or 9.68% followed this. Possession of offensive weapon with 80 or 3.70% and malicious destruction of property with 76 or 3.52% of the total sample rounds of the top charges. The five charges quoted above account

for an estimated 43.84% of the total sample of 2,160 charges filed in the year at the St. Ann Parish Court. The top five most frequently occurring charges recorded in the 2024 calendar year in the St. Ann parish court included threat, assault occasioning bodily harm, unlawful wounding, malicious destruction of property, and littering. From a sample of 502 charges, it is seen that the leading charges recorded in the 2025 calendar year at the Brown's Town Outstation included threat with 128 or 25.50% of the charges, assault occasioning bodily harm with 88 or 17.53% and unlawful wounding with 84 or 16.73%. Malicious destruction of property with 23 or 4.585% and conspiracy to unauthorized use of an access device with 1.99% of the sample followed.

Table 1.09.05: Distribution of the most frequently occurring charges filed at the St. Catherine Parish Court-Criminal Division in the year ended December 31, 2025

Offence	Frequency	Percentage (%)
Assault occasioning bodily harm	725	14.55
Unlawful wounding	405	8.13
Malicious destruction of property	360	7.23
Assault at common law	222	4.46
Toll Evasion	178	3.57
Sub-total	1890	37.94

Number of observations sampled (N): 4,982

The above table shows the sampling distribution of the five (5) most commonly occurring charges filed at the St. Catherine Parish Court in the 2025 calendar year. It is shown that assault occasioning bodily harm with 725 or 14.55% of the total sample of charges is the most frequently occurring charge. Unlawful wounding with 405 or 8.13%, malicious destruction of property with 360 or 7.23% and assault at common law with 222 or 4.46% followed this. Toll evasion with 178 or 3.57% of the total sample of charges filed round off the top five. The five charges quoted above account for an estimated 37.94% of the total sample of 4,982 charges filed at the St. Catherine Parish Court in the year. The top five most frequently occurring charges recorded in the 2024

calendar year in the St. Catherine parish court included assault occasioning bodily harm, threat possession of offensive weapon, unlawful wounding and malicious destruction of property.

Table 1.09.06: Distribution of the most frequently occurring charges filed at the St. Elizabeth Parish Court-Criminal Division in the year ended December 31, 2025

Offence	Frequency	Percentage (%)
Assault occasioning bodily harm	217	16.90
Unlawful wounding	167	13.01
Malicious destruction of property	96	7.48
Possession of offensive weapon	70	5.45
Possession of ganja	69	5.37
Sub-total	619	48.21

Number of observations sampled (N): 1,284

The above table shows the sampling distribution of the five (5) most commonly occurring charges filed at the St. Elizabeth Parish Court in the 2025 calendar year. It is shown that assault occasioning bodily harm with 217 or 16.90% of the total sample of charges is the most frequently occurring charge. Unlawful wounding with 167 or 13.01% and malicious destruction of property with 96 or 7.48% followed this. The top five is rounded off by possession of offensive weapon with 70 or 5.45% and possession of ganja with 69 or 5.37% of the sample. The charges quoted above accounts for an estimated 48.21% of the total sample of 1,284 charges filed at the St. Elizabeth Parish Court in the year. The top five most frequently occurring charges recorded in the 2024 calendar year in the St. Elizabeth parish court included assault occasioning bodily harm, no food handlers permit, possession of offensive weapon, unlawful wounding and malicious destruction of property.

Table 1.09.07: Distribution of the most frequently occurring charges filed at the St. James Parish Court-Criminal Division in the year ended December 31, 2025

Offence	Frequency	Percentage (%)
Assault occasioning bodily harm	296	10.68
Possession of offensive weapon	227	8.19
Unlawful Wounding	185	6.67
Smoking in a Public Place	164	5.92
Malicious destruction of property	144	5.19
Sub-total	1016	36.65

Number of observations sampled (N): 2,772

The above table shows the sampling distribution of the five (5) most commonly occurring charges at the St. James Parish Court in the 2025 calendar year. It is shown that assault occasioning bodily harm with 296 or 10.68% of the total sample of charges is the most frequently occurring charge. Possession of offensive weapon with 227 or 8.19% and unlawful wounding with 185 or 6.67% followed this. The top five is rounded off by smoking in a public place with 164 or 5.92% and malicious destruction of property with 144 or 5.19% of the total sample. The five charges quoted above account for an estimated 36.65% of the sample of 2,772 charges filed in year at the St. James Parish Court. The top five most frequently occurring charges recorded in the 2024 calendar year in the St. James parish court included assault occasioning bodily harm, possession of offensive weapon, unlawful wounding, threat and malicious destruction of property.

Table 1.09.08: Distribution of the most frequently occurring charges filed at the St. Mary Parish Court-Criminal Division in the year ended December 31, 2025

Offence	Frequency	Percentage (%)
Assault occasioning bodily harm	159	10.69
Unlawful Wounding	129	8.67
Threat	84	5.65
Possession of Ganja	77	5.17
Malicious destruction of property	73	4.91
Sub-total	522	35.08

Number of observations sampled (N): 1,488

The above table shows the sampling distribution of the five (5) most commonly occurring charges filed at the St. Mary Parish Court in the 2025 calendar year. It is shown that assault occasioning bodily harm with 159 or 10.69% of the total sample of charges is the most frequently occurring charge. Unlawful wounding with 129 or 8.67% and threat with 84 or 5.65% followed this. The top five is rounded off by possession of ganja with 77 or 5.17% and malicious destruction of property with 73 or 4.91% of the sample. The charges quoted above accounts for an estimated 35.08% of the total sample of 1,488 charges filed at the St. Mary Parish Court in the year. The top five most frequently occurring charges recorded in the 2024 calendar year in the St. Mary parish court included assault occasioning bodily harm, unlawful wounding, threat, possession of ganja and malicious destruction of property.

Table 1.09.09: Distribution of the most frequently occurring charges filed at the St. Thomas Parish Court-Criminal Division in the year ended December 31, 2025

Offence	Frequency	Percentage (%)
Assault occasioning bodily harm	175	14.39
Unlawful Wounding	127	10.44
Malicious destruction of property	83	6.83
Threat	75	6.17
Possession of offensive weapon	73	6.00
Sub-total	533	43.83

Number of observations sampled (N): 1,216

The above table shows the sampling distribution of the five (5) most commonly occurring charges filed at the St. Thomas Parish Court in the 2025 calendar year. It is shown assault occasioning bodily harm with 175 or 14.39% of the total sample of charges is the most frequently occurring charge. Unlawful wounding with 127 or 10.44%, malicious destruction of property with 83 or 6.83% and threat with 75 or 6.17% followed this. The top five is rounded off by possession of offensive weapon with 73 or 6% of the total sample of charges. The five charges quoted above

accounts for an estimated 43.83% of the sample of 1,216 charges filed in the year. The top five most frequently occurring charges recorded in the 2024 calendar year in the St. Thomas parish court included malicious destruction of property, unlawful wounding, assault occasioning bodily harm, threat and simple larceny.

Table 1.09.10: Distribution of the most frequently occurring charges filed at the Trelawny Parish Court-Criminal Division in the year ended December 31, 2025

Offence	Frequency	Percentage (%)
Assault occasioning bodily harm	180	14.04
Unlawful wounding	164	12.79
Possession of offensive Weapon	120	9.36
Smoking in a Public Place	77	6.01
Malicious destruction of property	76	5.93
Sub-total	617	48.13

Number of observations sampled (N): 1,282

The above table shows the sampling distribution of the five (5) most commonly occurring charges filed at the Trelawny Parish Court in the 2025 calendar year. It is shown assault occasioning bodily harm with 180 or 14.04% of the total sample of charges is the most frequently occurring charge. Unlawful wounding with 164 or 12.79% and possession of offensive weapon with 120 or 9.36% followed this. Smoking in a Public Place with 77 or 6.01% and malicious destruction of property with 76 or 5.93% of the total sample of charges round of the top five charges filed in the year. The five charges quoted above accounts for an estimated 48.13% of the total sample of 1,282 charges filed at the Trelawny Parish Court in the year. The top five most frequently occurring charges recorded in the 2024 calendar year in the Trelawny parish court included unlawful wounding, assault occasioning bodily harm, possession of offensive weapon, disorderly conduct, and malicious destruction of property.

Table 1.09.11: Distribution of the most frequently occurring charges filed at the Westmoreland Parish Court-Criminal Division in the year ended December 31, 2025

Offence	Frequency	Percentage (%)
Assault occasioning bodily harm	464	16.20
Unlawful Wounding	296	10.33
Possession of offensive weapon	260	9.08
Malicious destruction of property	176	6.14
Threat	151	5.27
Sub-total	1347	47.02

Number of observations sampled (N): 2,865

The above table shows the sampling distribution of the five (5) most commonly occurring charges filed at the Westmoreland Parish Court in the 2025 calendar year. It is shown that assault occasioning bodily harm with 464 or 16.20% of the total sample of charges is the most frequently occurring charge. Unlawful wounding with 296 or 10.33% and possession of offensive weapon with 260 or 9.08% and malicious destruction of property with 176 or 6.14% followed this. Threat with 151 or 5.27% of the sample rank next. The five charges quoted above account for an estimated 47.02% of the total sample of 2,865 charges filed in the year at the Westmoreland Parish Court. The top five most frequently occurring charges recorded in the 2024 calendar year in the Westmoreland parish court included assault occasioning bodily harm, threat, unlawful wounding, malicious destruction of property, and possession of offensive weapon.

Table 1.09.12: Distribution of the most frequently occurring charges filed at the Clarendon Parish Court-Criminal Division in the year ended December 31, 2025

Offence	Frequency	Percentage (%)
Assault occasioning bodily harm	343	15.53
Unlawful wounding	210	9.51
Malicious destruction of property	131	5.93
Threat	129	5.84
Possession of offensive Weapon	68	3.08
Sub-total	881	39.90

Number of observations sampled (N): 2,208

The above table shows the sampling distribution of the five (5) most commonly occurring charges filed at the Clarendon Parish Court in the 2025 calendar year. It is shown that assault occasioning bodily harm with 343 or 15.53% of the total sample of charges is the most frequently occurring charge. Unlawful wounding with 210 or 9.51% and malicious destruction of property with 131 or 5.93% followed this. The top five is rounded off by threat with 129 or 5.84% and possession of offensive weapon with 68 or 3.08%. The charges quoted above account for an estimated 39.90% of the sample of 2,208 charges filed at the Clarendon Parish Court in the year. The top five most frequently occurring charges recorded in the 2024 calendar year in the Clarendon parish court included assault occasioning bodily harm, unlawful wounding, smoking in a public place, malicious destruction of property and possession of offensive Weapon.

Table 1.09.13: Distribution of the most frequently occurring charges filed at the Corporate Area Parish Court-Criminal Division in the year ended December 31, 2025

Offence	Frequency	Percentage (%)
Assault occasioning bodily harm	1004	11.16
Unlawful wounding	628	6.98
Littering	457	5.08
Malicious destruction of property	444	4.93
Possession of offensive weapon	371	4.12
Sub-total	2904	32.27

Number of observations sampled (N): 8,998

The above table shows the sampling distribution of the five (5) most commonly occurring charges filed at the Corporate Area Parish Court-Criminal Division for the 2025 calendar year. It is shown that assault occasioning bodily harm with 1004 or 11.16% of the total sample of charges is the most frequently occurring charge. Unlawful wounding with 628 or 6.98% and littering with 457 or 5.08% followed this. The top five is rounded off by malicious destruction of property with 444 or 4.93% and possession of offensive weapon with 371 or 4.12% of the charges. The five charges

quoted above accounts for an estimated 32.27% of the total sample of 8,998 charges at filed at the Corporate Area Parish Court –Criminal Division in the year. The top five most frequently occurring charges recorded in the 2024 calendar year in the Corporate Area parish court included assault occasioning bodily harm, unlawful wounding, disorderly conduct, littering and possession of an offensive weapon.

Table 1.10: Conviction rate for summary and indictment matters heard in the year ended December 31, 2025

Type of case	Number of disposed matters	Number of guilty verdicts	Number of guilty pleas	Aggregate number of guilty outcomes	Estimated conviction rate (%)
Summary	8874	871	4009	4880	54.99
Indictment	14190	443	1869	2312	16.29

The above table shows the estimated conviction rate for summary and indictment matters heard across all parish courts in the 2025 calendar year. Summary matters heard in the year include charges such as possession of an offensive weapon, possession of ganja, exposing goods for sale and dealing in ganja. The estimated conviction rate for the year for summary matters was 54.99%, which is 4.23 percentage points below the conviction rate of 59.22% recorded for the corresponding 2024 calendar year. The estimated conviction rate for indictment matters was significantly lower at 16.29% for the year, a rate which is approximately 0.54 percentage points below the 16.83% recorded in the 2024 calendar year. Indictment matters heard in the year included charges such as assault occasioning bodily harm, unlawful wounding, malicious destruction of property and simple larceny.

Table 1.11: Sampling distribution of the most frequently occurring charges across the parish courts for the year ended December 31, 2025

Charge	Frequency	Percentage (%)
Assault occasioning bodily harm	4449	12.98
Unlawful wounding	3006	8.77
Malicious destruction of property	1950	5.69
Possession of offensive weapon	1746	5.09
Threat	1556	4.54
Disorderly conduct	917	2.67
Assault at common law	914	2.67
Simple larceny	863	2.52
Possession of ganja	827	2.41
Dealing in ganja	711	2.07
Sub-total	16939	49.41

Number of observations sampled (N): 34,284

The above table shows the distribution of the ten most commonly occurring charges across all parish courts for the 2025 calendar year. It is shown that assault occasioning bodily harm with 4,449 or 12.98% of the total number of charges sampled is the most frequently occurring charge. Unlawful wounding with 3,006 or 8.77% and malicious destruction of property with 1,950 or 5.69% followed this. The top five is rounded off by possession of an offensive weapon with 1,746 or 5.09% and threat with 1,556 or 4.54% of the total sample of charges filed in the year. These ten most frequently occurring types of charges account for approximately 49.41% of the total sample of charges filed in the year.

Table 1.12: Conviction rate for leading occurring charges heard in the year ended December 31, 2025

Type of Offence	Number of disposed matters	Number of guilty verdicts	Number of guilty pleas	Aggregate number of guilty outcomes	Estimated conviction rate (%)
Possession of offensive weapon	1585	294	1004	1298	81.89
Possession of ganja	795	110	483	593	74.59
Disorderly conduct	784	133	399	532	67.86
Dealing in ganja	680	77	361	438	64.41
Simple larceny	806	55	178	233	28.91
Malicious destruction of property	1705	36	146	182	10.67
Assault at common law	839	25	41	66	7.87
Unlawful wounding	2698	53	152	205	7.60
Assault occasioning bodily harm	3977	50	239	289	7.27
Threat	1704	34	72	106	6.22

The above table shows the estimated conviction rate for the ten (10) leading charges across all parish courts in the 2025 calendar year. It is shown that possession of offensive weapon had the highest estimated conviction rate on the list with 81.89%. Possession of ganja with 74.59% and disorderly conduct with 67.86% followed this. The top conviction rates on the list in the year is rounded off by dealing in ganja with an estimated conviction rate of 64.41%. Exposing goods for sale recorded the highest estimated conviction rate in the corresponding 2024 calendar year with 86.67%, followed by possession of offensive weapon with an estimated conviction rate of 86.33%.

Table 1.13: Sampling distribution of the average age of active charges for each parish court for the year ended December 31, 2025

Parish Court	Average age of active charges (days)
Clarendon	169
Trelawny	165
Portland	135
St. Mary	124
Hanover	95
Westmoreland	157
St. Catherine	138
St. Ann	119
St. James	131
St. Thomas	139
Corporate Area Criminal	166
Manchester	148
St. Elizabeth	153
Overall Average	141.46
Standard Deviation	21.35
Skewness	-0.65

The above table shows the average age of active charges originating in the 2025 calendar year, for charges originating in said year. The overall average age of active matters originating in the year was approximately 141 days or roughly 4.7 months, roughly 3 more days than the average recorded in the 2024 calendar year. The parish courts of Hanover, St. Ann and St. Mary have the lowest averages on the list. On the contrary, the highest averages were observed in the parish courts of Clarendon, Corporate Area Criminal, Trelawny, and Westmoreland. The standard deviation of the scores was, however, relatively low (21 days), an indication that the individual values for the parish courts were on average close to the overall mean. The negative skewness indicates that most of the individual times to disposition in the data set were clustered the overall series average. There is an intuitive correlation between case clearance rates and the average age of cases in the long run, but it does not necessarily manifest empirically in the short run. This

means that in the long run, courts with higher clearance rates will in general have a lower case backlog and a lower average age of active cases. Courts which manage to maintain a case clearance rate of between 90% and 110% long enough will eventually eliminate their case backlog, a feat that is quite conceivable with improved case progression management in the respective courts. In such cases, the average time taken to dispose of cases will experience a natural decline, tapering off at a modest, tolerable rate, improving the efficiency of the courts and the enhancing the timely delivery of justice.

Table 1.14: Average age of charges disposed for matters originating in the year ended December 31, 2025

Parish Court	Average age of disposed charges (days)
Clarendon	88
Trelawny	78
Portland	92
St. Mary	73
Hanover	35
Westmoreland	77
St. Catherine	74
St. Ann	77
St. James	66
St. Thomas	90
Corporate Area Criminal	98
Manchester	88
St. Elizabeth	43
Overall Average	75.31
Standard Deviation	18.50
Skewness	-1.19

The above table shows that the average time taken to dispose of criminal cases filed in the Parish Courts in the 2025 calendar year is approximately 75 days. This is roughly 10 more days than the time taken to resolve cases originating in the 2024 calendar year. The standard deviation of the

scores was relatively low (19 days), an indication that the individual values for the parish courts were on average close to the overall mean. The negative skewness, however, indicates that proportionately more of the scores of the individual times to disposition in the data set were above the overall series average. The scores ranged from a low of roughly 35 days at the Hanover Parish Court to a high of 98 days for the Corporate Area Parish Court.

Table 1.15a: Sampling distribution of the times to disposition as at the year ended December 31, 2025

Parishes	Time interval in days						730 days and over	Sample size (n)
	0-89 days	90-179 days	180-269 days	270-364 days	365-547 days	548-729 days		
Corporate Area Criminal	21978 (33.6%)	12295 (18.8%)	7389 (11.3%)	5239 (8.0%)	6503 (9.9%)	3836 (5.9%)	8232 (12.6%)	65472 (100%)
St. Catherine	8895 (32.4%)	5902 (21.5%)	3482 (12.7%)	2230 (8.1%)	2352 (8.6%)	1203 (4.4%)	3360 (12.3%)	27424 (100%)
St. James	7029 (38.2%)	3576 (19.4%)	1975 (10.7%)	1350 (7.3%)	1507 (8.2%)	770 (4.2%)	2187 (11.9%)	18394 (100%)
Manchester	4724 (29.7%)	3333 (20.9%)	2052 (12.9%)	1452 (9.1%)	1747 (11.0%)	1041 (6.5%)	1572 (9.9%)	15921 (100%)
Westmoreland	7266 (54.5%)	2554 (19.2%)	1382 (10.4%)	766 (5.7%)	747 (5.6%)	289 (2.2%)	324 (2.4%)	13328 (100%)
St. Ann	4324 (28.6%)	3052 (20.2%)	1808 (11.9%)	1328 (8.8%)	1796 (11.9%)	1006 (6.6%)	1828 (12.1%)	15142 (100%)
Clarendon	6355 (40.9%)	3648 (23.5%)	1865 (12.0%)	1123 (7.2%)	1329 (8.6%)	540 (3.5%)	659 (4.2%)	15519 (100%)
St. Thomas	2508 (30.4%)	1799 (21.8%)	1109 (13.5%)	871 (10.6%)	847 (10.3%)	392 (4.8%)	717 (8.7%)	8243 (100%)
Portland	3830 (36.4%)	2586 (24.6%)	1199 (11.4%)	731 (7.0%)	769 (7.3%)	419 (4.0%)	976 (9.3%)	10510 (100%)
St. Mary	4608 (42.1%)	2190 (20.0%)	1357 (12.4%)	772 (7.0%)	731 (6.7%)	304 (2.8%)	993 (9.1%)	10955 (100%)
Trelawny	2711 (34.6%)	1406 (17.9%)	924 (11.8%)	670 (8.6%)	862 (11.0%)	491 (6.3%)	771 (9.8%)	7835 (100%)
Hanover	3797 (54.2%)	1503 (21.4%)	694 (9.9%)	370 (5.3%)	286 (4.1%)	151 (2.2%)	206 (2.9%)	7007 (100%)
St. Elizabeth	2834 (35.0%)	1853 (22.9%)	1040 (12.9%)	696 (8.6%)	740 (9.1%)	354 (4.4%)	573 (7.1%)	8090 (100%)
% of Total	36.12	20.42	11.74	7.86	9.03	4.82	10.01	-
Average	6219.92	3515.15	2021.23	1353.69	1555.08	830.46	1722.92	17218.46
Standard Deviation	5121.92	2898.28	1763.19	1261.59	1593.53	960.51	2141.23	15541.35
Skewness	2.75	2.67	2.72	2.80	2.84	2.92	2.69	2.87

Number of charges sampled (N) = 223,840

Note 1: The data in this table covers case activity for at least the previous 9.3 years

The above table shows the breakdown of the times to disposition for matters filed in the respective parish courts for at least 112 consecutive months (9.3 years) over the period September 2016 to December 2025. The results shown suggest decisively that a significant proportion of the charges resolved in the period took less than 90 days, accounting for roughly 36.12% of the disposals. The Corporate Area Parish Court-Criminal Division along with the parish courts of St. Catherine, Westmoreland and St. James are among the courts accounting for the larger proportions of cases disposed within 90 days. This trend is broadly similar to that seen over the past 24 months. Cumulatively, 76.14% of the matters disposed over the period took less than a year, a continued positive indicator of the potential effectiveness of the courts in sustaining overall productivity and realizing the objective of becoming the best in the Caribbean region in three years and among the best in the world in six years. From the data set, the parish courts of Corporate Area Parish Court-Criminal Division, St. Catherine and St. Ann had the largest proportion of their disposed matters taking more than a year. The data set also shows that roughly 10.01% of the matters resolved over the period took over 730 days or over 2 years. The parish courts of Corporate Area-Criminal Division, St. Catherine and St. James had the largest proportion of their disposed matters taking more than 2 years. The skewness of the times taken by the respective parish courts to dispose of matters in this sample range from weak positive to moderate positive, which is an indication that for disposed cases, the distributions of the times taken do not vary dramatically across the courts. The difference, however, is the proportion of cases disposed, relative to the caseload, which as shown earlier, indicates that some courts are performing much better.

Table 1.15b: Sampling distribution of the times to disposition for matters completed in the year ended December 31, 2025

Parishes	Time interval in days						730 days and over	Sample size (n)
	0-89 days	90-179 days	180-269 days	270-364 days	365-547 days	548-729 days		
Corporate Area Criminal	1212 (17.5%)	1302 (18.9%)	939 (13.6%)	470 (6.8%)	794 (11.5%)	302 (4.4%)	1888 (27.3%)	6907 (100%)
St. Catherine	1073 (29.5%)	638 (17.5%)	368 (10.1%)	262 (7.2%)	221 (6.1%)	155 (4.3%)	924 (25.4%)	3641 (100%)
St. James	657 (52.8%)	293 (23.6%)	156 (12.5%)	49 (3.9%)	41 (3.3%)	20 (1.6%)	28 (2.3%)	1244 (100%)
Manchester	493 (40.3%)	362 (29.6%)	125 (10.2%)	59 (4.8%)	84 (6.9%)	41 (3.4%)	58 (4.7%)	1222 (100%)
Westmoreland	550 (42.1%)	319 (24.4%)	169 (12.9%)	104 (8.0%)	114 (8.7%)	25 (1.9%)	25 (1.9%)	1306 (100%)
St. Ann	568 (38.0%)	351 (23.5%)	158 (10.6%)	82 (5.5%)	123 (8.2%)	87 (5.8%)	125 (8.4%)	1494 (100%)
Clarendon	492 (36.3%)	325 (24.0%)	158 (11.7%)	88 (6.5%)	149 (11.0%)	64 (4.7%)	79 (5.8%)	1355 (100%)
St. Thomas	263 (36.7%)	132 (18.4%)	121 (16.9%)	93 (13.0%)	72 (10.0%)	24 (3.3%)	12 (1.7%)	717 (100%)
Portland	411 (27.8%)	354 (24.0%)	166 (11.2%)	72 (4.9%)	52 (3.5%)	36 (2.4%)	387 (26.2%)	1478 (100%)
St. Mary	578 (49.5%)	263 (22.5%)	113 (9.7%)	35 (3.0%)	58 (5.0%)	27 (2.3%)	94 (8.0%)	1168 (100%)
Trelawny	274 (32.3%)	124 (14.6%)	78 (9.2%)	74 (8.7%)	135 (15.9%)	100 (11.8%)	62 (7.3%)	847 (100%)
Hanover	332 (67.5%)	104 (21.1%)	45 (9.1%)	4 (0.8%)	4 (0.8%)	1 (0.2%)	2 (0.4%)	492 (100%)
St. Elizabeth	243 (69.4%)	48 (13.7%)	19 (5.4%)	9 (2.6%)	9 (2.6%)	5 (1.4%)	17 (4.9%)	350 (100%)
% of Total	32.16	20.77	11.77	6.30	8.35	3.99	16.66	-
Average	549.69	355.00	201.15	107.77	142.77	68.23	284.69	1709.31
Standard Deviation	295.89	322.98	236.82	125.95	204.72	82.52	544.23	1754.52
Skewness	1.32	2.35	2.91	2.38	3.08	2.19	2.59	2.57

Number of charges sampled (N) = 22,221

The table above shows the breakdown of the time disposition for matters disposed parish courts in the year ended December 31, 2025. The results shown suggest decisively that a significant proportion of the charges resolved in the period took less than 90 days, accounting for roughly 32.16% of the disposals. The Corporate Area Parish Court -Criminal Division along with the parish courts of St. Catherine, St. James and St. Mary are among the courts accounting for the larger proportions of cases disposed under 90 days. Cumulatively, 71% of the matters resolved over the period took less than a year, a positive indicator of the potential effectiveness of the courts in increasing overall productivity and realizing the objective of becoming the best in the Caribbean region in three years and among the best in the world in six years. From the data set, the parish courts of Corporate Area - Criminal Division, St. Catherine, and Portland had the largest proportion of their disposed matters taking more than a year. The data set also shows that roughly 16.66% of the matters disposed over the period took over 730 days or over 2 years. The parish courts of Corporate Area - Criminal Division, St. Catherine and Portland had the largest proportion of their disposed matters in the year taking more than 2 years. The skewness of the times taken by the respective parish courts to dispose of matters in this sample range from weak positive to moderate positive, which is an indication that for disposed cases, the distributions of the time taken do not vary dramatically across the courts. The difference, however, is the proportion of cases disposed, relative to the caseload, which as shown earlier, indicates that some courts are performing much better.

Table 1.16a: Descriptive statistics on the time to disposition for cases disposed as at the year ended December 31, 2025

Parishes	Time to disposition (days)							
	Average	Mode	Median	Standard Deviation	Skewness	Minimum	Maximum	Sample size (N)
Corporate Area Criminal	336.32	1	165	470.95	3.06	1	3969	65472
St. Catherine	348.91	28	157	533.28	3.13	1	7091	27424
St. James	398.75	28	134	958.44	6.77	1	17100	18394
Manchester	295.65	63	175	340.14	3.26	1	9044	15921
Westmoreland	148.10	28	77	192.40	2.99	1	2555	13328
St. Ann	335.29	28	186	421.58	3.26	1	8875	15142
Clarendon	202.61	63	117	255.89	3.58	1	3824	15519
St. Thomas	275.70	63	168	317.06	2.48	1	2739	8243
Portland	322.73	63	129	566.41	3.39	1	4197	10510
St. Mary	284.26	14	119	489.48	3.51	1	5684	10955
Trelawny	290.43	28	160	347.59	2.40	1	3722	7835
Hanover	152.93	28	77	252.33	10.10	1	9333	7007
St. Elizabeth	243.78	28	140	292.27	2.51	1	2223	8090
Average/Weighted Average	303.44	35.62	138.77	418.29	3.88	1.00	6181.23	17218.46
Standard Deviation	75.35	20.56	34.74	199.36	2.17	0.00	4151.12	15541.35
Skewness	-0.54	0.31	-0.65	1.72	2.46	0.00	1.62	2.87

Number of charges sampled (N) = 223,840

Note 1: The data in this table covers case activity for at least the previous 9.3 years

The table above shows the descriptive statistics on a large sample of matters disposed for each parish court as at December 31, 2025. For each parish court, the estimates cover case activity for at least a 112-month period over September 2016 – December 2025 for most parish courts and it should be noted that these descriptive statistics are for matters disposed over that sample period. The output produces an estimated weighted average time taken to dispose of matters in the parish courts (Criminal Division) of approximately 303 days (10.1 months). The skewness of these times to disposition is a low negative 0.54, suggesting a cluster of scores around the overall

mean. For matters resolved in the period, the parish courts of Westmoreland (148 days), Hanover (153 days) and Clarendon (203 days) took the lowest times on average to resolve cases over the period. The parish courts of St. James (399 days), St. Catherine (349 days) and Corporate Area Criminal (336 days) demonstrate the highest times to disposition for matters resolved over the period. The average variation among the times to disposition across the parish courts is, however, wide as shown by the moderately high standard deviation (75.35), suggesting inconsistencies in performances on this measure. An interesting finding is that the minimum time taken to resolve matters across all parish courts was 1 day; however, the maximum times are substantially larger, in some cases several years. This result continues to be both a reflection of the relative complexity of cases entering open court over the period as well as the relative strength of case management across the various parish courts. The maximum times to disposition in the sample ranged from a low of 2,223 days (74.1 months/6.2 years) in the St. Elizabeth parish court to a high of 17,100 days (227.5 months/19 years) in the St. James Parish Court. The overall skewness of the maximum times to disposition is a positive 1.62, which is an indication that most of the maximum times to disposition were below the overall series mean. The sample size used to compute these descriptive data was a substantial 223,840 matters.

Table 1.16b: Descriptive statistics on the time to disposition for matters completed in the year ended December 31, 2025

Parishes	Time to disposition (days)							
	Average	Mode	Median	Standard Deviation	Skewness	Minimum	Maximum	Sample size (N)
Corporate Area Criminal	668.63	934	270	873.33	1.82	1	3969	6907
St. Catherine	656.90	28	206	917.62	1.59	1	4239	3641
St. James	140.18	35	84	202.06	4.23	1	2030	1244
Manchester	189.11	28	117	227.18	3.24	1	2454	1222
Westmoreland	174.51	126	110	193.51	2.84	1	1350	1306
St. Ann	296.35	28	125.50	488.15	3.77	1	4717	1494
Clarendon	245.71	63	133	338.97	3.98	1	3759	1355
St. Thomas	213.50	89	161	234.77	3.57	1	1777	717
Portland	766.27	63	168	1094.94	1.31	1	4197	1478
St. Mary	252.25	14	91	478.83	3.52	1	3118	1168
Trelawny	306.75	551	210	358.82	4.20	1	3722	847
Hanover	87.36	28	56	111.46	5.96	1	1397	492
St. Elizabeth	131.65	28	49	253.93	3.95	1	1877	350
Average/Weighted Average	465.69	155.00	136.96	444.12	3.38	1.00	2969.69	1709.31
Standard Deviation	226.67	273.97	64.44	317.88	1.26	0.00	1198.69	1754.52
Skewness	1.20	2.48	0.60	1.12	0.00	0.00	-0.05	2.57

Number of charges sampled (N) = 22,221

The table above shows the descriptive statistics on a sample of matters disposed for each parish court in the year ended December 31, 2025. The output produces an estimated weighted average time taken to resolve matters in the parish courts (Criminal Division) of approximately 466 days or 15.5 months. The skewness of these times to disposition is a positive 1.20, suggesting that a large proportion of these times were below the overall mean. For matters resolved in the year, the parish courts of Hanover (87 days), St. Elizabeth (132 days) and St. James (140 days) took the lowest times on average to resolve cases in the year. The parish courts of Portland (766 days), Corporate Area Criminal (669 days) and St. Catherine (657 days) demonstrate the highest times

to disposition for matters resolved during the year. The average variation among the times to disposition across the parish courts is, however, wide as shown by the moderately high standard deviation (227), suggesting inconsistencies in performances on this measure. An interesting finding is that the minimum time taken to dispose of matters across all parish courts was 1 day; however, the maximum times are substantially larger, in some cases several years. This result continues to be both a reflection of the relative complexity of cases entering open court over the period as well as the relative strength of case management across the various parish courts. The maximum times to disposition in the sample ranged from a low of 1,350 days (45 months/3.8 years) in the Westmoreland parish court to a high of 4,717 days (157.2 months/13.1 years) in the St. Ann Parish Court. The overall skewness of the maximum times to disposition is a negative 0.05 which is an indication that proportionately more of the maximum times to disposition were close the overall series mean. The sample size used to compute these descriptive data was a substantial 22,221 matters cases which were resolved during the 2025 calendar year.

Table 1.16c: Net and gross criminal case backlog as at the year ended December 31, 2025 for cases over 24 months

Parish Court	Net Backlog (%)	Gross Backlog (%)
Clarendon	0.35	11.07
Corporate area	4.14	24.95
Hanover	0.11	4.01
Manchester	2.65	13.51
Portland	0.90	4.57
St. Ann	2.88	25.60
St. Catherine	0.22	9.34
St. Elizabeth	4.88	13.65
St. James	0.65	12.29
St. Mary	0.42	5.02
St. Thomas	2.14	9.48
Trelawny	0.34	10.37
Westmoreland	0.12	7.61
Weighted Average	2.16	15.89
Standard Deviation	1.64	6.83

Note: The net backlog for the Browns Town Outstation in St. Ann for 2025 is 10.01% and the gross backlog is 31.41%.

The net and gross case backlog rates provide one of the most decisive indicators of court performance as they are strongly influenced by most of the other critical court performance metrics such as the case clearance, case disposal, trial and hearing date certainty rates and are also directly correlated with the case congestion rate. The estimated gross case backlog rate provides a measurement of the proportion of cases filed for a given period (of over two years) which are either active or inactive (i.e. are unresolved) and are over two years old at the date of reporting. The closely related estimated net case backlog rate is the proportion of all cases filed for a given period (of over two years) which are still active and exceeding two years old at the time of reporting. The estimated net case backlog rate therefore excludes inactive cases which are unresolved. Based on international best practices an estimated gross case backlog rate of under 10% is desirable, while an estimated net case backlog rate of under 5% is prescribed. The

results revealed are quite outstanding, revealing a net case backlog rate for cases over 24 months old (weighted average) in the criminal division of the parish courts is 2.16% (with a standard deviation of 1.64%) which is satisfies than the international standard. The estimated gross case backlog rate also stands at 15.89% (with a standard deviation of 6.83%), an indication that there are a large number of inactive unresolved criminal cases in the parish courts. This rate is 5.89 percentage points higher than the prescribed rate of 10%, but seemingly has the potential to meet this standard relatively soon with the application of more aggressive case management practices and reduction in the incidence of delays in the criminal courts. The sample set is large and representative of the current direction of the court system. The parish courts of Hanover with an estimated net backlog rate of 0.11%, Westmoreland with 0.12% and St. Catherine with an estimated net case backlog rate of 0.22% have the lowest (best) estimated net case backlog rate in the time series, while the parish courts St. Elizabeth (4.88%), Corporate Area Criminal (4.14%) and St. Ann (2.88%) have the highest rates. As for the estimated gross backlog rate, the parish courts of Hanover (4.01%), Portland (4.57%) and St. Mary (5.02%) have the lowest (best) estimated gross backlog rates in the series, while the parish courts of St. Ann (25.60%), Corporate Area Criminal Court (24.95%) and St. Elizabeth (13.65%) have the highest rates. Taken together, these are quite impressive returns for the criminal court system in Jamaica and augur well for future prospects.

Table 1.16d: Net and gross criminal case backlog as at the year ended December 31, 2025 for cases over 20 months

Parish Court	Net Backlog (%)	Gross Backlog (%)
Clarendon	0.52	11.49
Corporate area	4.23	25.66
Hanover	0.11	4.07
Manchester	3.11	14.16
Portland	1.03	4.74
St. Ann	3.05	26.57
St. Catherine	0.35	9.78
St. Elizabeth	5.09	13.99
St. James	0.67	12.46
St. Mary	0.45	5.10
St. Thomas	2.25	9.79
Trelawny	0.53	10.81
Westmoreland	0.39	8.24
Weighted Average	2.29	16.42
Standard Deviation	1.68	7.05

Note: The net backlog for the Browns Town Outstation in St. Ann for 2024 is 10.50% and the gross backlog is 32.32%.

The net and gross case backlog rates provide one of the most decisive indicators of court performance as they are strongly influenced by most of the other critical court performance metrics such as the case clearance, case disposal, trial and hearing date certainty rates and are also directly correlated with the case congestion rate. The estimated gross case backlog rate provides a measurement of the proportion of cases filed for a given period (of over two years) which are either active or inactive (i.e. are unresolved) and are over two years old at the date of reporting. The closely related estimated net case backlog rate is the proportion of all cases filed for a given period (of over two years) which are still active and exceeding two years old at the time of reporting. The estimated net case backlog rate therefore excludes inactive cases which are unresolved. Based on international best practices an estimated gross case backlog rate of under 10% is desirable, while an estimated net case backlog rate of under 5% is prescribed. The

results revealed are quite outstanding, revealing a net case backlog rate for cases over 20 months old (weighted average) in the criminal division of the parish courts is 2.29% (with a standard deviation of 1.68%) which is satisfies than the international standard. The estimated gross case backlog rate also stands at 16.42% (with a standard deviation of 7.05%), an indication that there are a large number of inactive unresolved criminal cases in the parish courts. This rate is 6.42 percentage points higher than the prescribed rate of 10%, but seemingly has the potential to meet this standard relatively soon with the application of more aggressive case management practices and reduction in the incidence of delays in the criminal courts. The sample set is large and representative of the current direction of the court system. The parish courts of Hanover with an estimated net backlog rate of 0.11%, St. Catherine with 0.35%, and Westmoreland with an estimated net case backlog rate of 0.39% have the lowest (best) estimated net case backlog rate in the time series, while the parish courts St. Elizabeth (5.09%), Corporate Area Criminal (4.23%) and Manchester (3.11%) have the highest rates. As for the estimated gross backlog rate, the parish courts of Hanover (4.07%), Portland (4.74%) and St. Mary (5.10%) have the lowest (best) estimated gross backlog rates in the series, while the parish courts of St. Ann (26.57%), Corporate Area Criminal Court (25.66%) and Manchester (14.16%) have the highest rates. Taken together, these are quite impressive returns for the criminal court system in Jamaica and augur well for future prospects.

Table 1.17: Distribution of methods of disposition for matters set for trial during the year ended December 31, 2025

Methods of Disposition	Frequency	Percentage (%)
Not guilty	1358	31.00
Dismissed	1120	25.57
Guilty Plea	863	19.70
Not Guilty Plea - Mediated Settlement	479	10.94
Guilty	310	7.08
Committed to Circuit	207	4.73
Transferred	43	0.98
Total	4380	100.00

The above table summarizes the common methods of disposition for a sample of cases proceeding to trial. It is seen that matters not guilty verdicts with 1,358 or 31% of the cases disposed, matters dismissed with 1,120 or 25.57% and disposals by way of guilty pleas with 863 or 19.70% account for the three leading methods of disposition in the sample for the year ended December 31, 2025.

Methods of Disposal and Conviction Rate

Table 1.18: Sampling distribution of the methods of disposition for the year ended December 31, 2025

Parish Court	Guilty Plea	Dismissed	Not Guilty Verdict	Transferred	Mediated Settlement	Guilty Verdict	Committed to Circuit Court	Total
St. Catherine	921	1875	85	644	1547	41	448	5561
Corporate Area Criminal	2903	2454	972	299	937	19	882	8466
Westmoreland	656	370	563	14	305	1	238	2147
St. James	-	7	833	11	2	1085	296	2234
Manchester	194	263	472	51	190	335	313	1818
Clarendon	596	121	480	199	204	40	195	1835
Trelawny	340	222	356	5	75	33	159	1190
Hanover	163	80	221	51	269	21	127	932
Portland	180	9	363	8	85	179	270	1094
St. Mary	186	334	449	-	25	103	393	1490
St. Thomas	309	6	259	135	254	23	63	1049
St. Ann	410	75	238	149	150	17	170	1209
St. Elizabeth	360	326	19	-	229	9	6	949
Total	7218	6142	5310	1566	4272	1906	3560	29974
Percentage of total	24.08	20.49	17.72	5.22	14.25	6.36	11.88	-

Total sample size: 29,974

The above table shows a sampling distribution of the methods of disposition across all parish courts for the 2025 calendar. From the sample, it is observed that the largest proportion of matters disposed during the year were by way of a guilty plea with 24.08% of the sample, followed by matters dismissed with 20.49% and not guilty verdicts with 17.72%. Mediated settlements with 14.25%, matters committed to Circuit Court with 11.88%, guilty verdicts with 6.36% and matters transferred to another court with 5.22% account for the remaining disposals in the year. The combined 30.44% of the cases disposed by way of guilty outcomes represent the

estimated criminal conviction rate in the parish courts for the year. This represents a decline of 1.07 percentage points when compared to the corresponding period in 2024.

Common Reasons for Adjournment

Table 1.19.01: Sampling distribution of the most frequently occurring reasons for adjournment for the year ended December 31, 2025

Reasons for Adjournment	Count	Percentage (%)
Defendant Not Appearing (DNA) warrant issued	2946	15.35
Disclosure	891	4.64
Referred to Mediation*	836	4.36
File to be completed	812	4.23
Re-issue application	568	2.96
Adjournment request - crown	449	2.34
Subpoena investigating officer	292	1.52
Psychiatric evaluation to be done	281	1.46
Medical report unavailable	276	1.44
Investigating officer unavailable	228	1.19
Sub-total	7579	39.50

(Sample size of reasons for adjournments/continuance = 19,188)

Note: DNA means that the accused 'did not appear'

***Referral to mediation encompasses referrals to Probation and to the Dispute Resolution Foundation**

The above table is derived using a sample of 19,188 reasons for adjournments/continuance for matters heard in the across all parish courts. The largest proportion (15.35%) adjournments due to the nonappearance of the accused, leading to the issuing of warrants. Adjournments for disclosure with 4.64% and referrals to mediation with 4.36% account for the top three reasons for adjournment across the parish courts for the year. Adjournments due to incomplete files with 4.23% and re-issued applications with 2.96%, round of the top five reasons for adjournment in this period. Four (4) of the top five reasons for adjournment were also featured in the top five

for the 2025 calendar year. The leading reasons for adjournment listed above account for 39.50% of the total sample of adjournments.

The case file integrity rate:

One factor, which has a significant bearing on the progression of cases through the court system, is the case file integrity rate. A case file is considered to have met the standards of integrity if at the point of a court hearing requiring the use of said file; it is complete, accurate, available and correctly listed for court. Hence reasons for adjournment such as file incomplete, file not ready for court, matter wrongly listed and matter not before the court have an adverse impact on the case file integrity rate of the courts. In the 2025 calendar year, the case file integrity rate for criminal matters across the parish courts was 94.88%, as 5.12% of the total incidence of adjournments was due to the indicated factors, which impair the case file integrity rate. Of these factors, file to be completed accounts for 4.23% of the total incidence of adjournments/continuance and is the greatest contributor, adversely affecting the case file integrity rate. This rate is below the prescribed international standard of 98%-100%. This is an area in which major operational interventions need to be undertaken across the parish courts to improve the availability, completeness, accuracy and correct scheduling of case files for court.

Table 1.19.02: Summary of case management date activity for matters heard in the year ended December 31, 2025

Parish Court	Average number of cases management dates per case	Standard Deviation of cases management dates Per Case	Skewness of cases management dates per case	Maximum cases management dates Court Frequency	Minimum cases management dates Court Frequency
Clarendon	4.02	3.37	1.98	33	1
Corporate Area	6.55	9.37	3.16	96	1
Hanover	2.22	1.42	1.41	8	1
Manchester	2.89	2.15	1.92	22	1
Portland	3.86	3.81	2.83	33	1
St. Ann	2.89	3.11	3.05	18	1
St. Catherine	3.16	3.20	3.21	40	1
St. James	2.48	1.96	2.20	22	1
St. Mary	3.75	3.00	1.74	21	1
St. Thomas	3.34	2.63	1.97	26	1
Trelawny	4.06	3.65	2.08	32	1
Westmoreland	4.75	5.97	3.38	40	1
Weighted Average	4.57	-	-	32.58	1.00
Standard Deviation	1.16	-	-	22.06	0.00
Skewness	1.36	-	-	2.38	0.00

The above table summarises the number of case management dates per case leading towards disposition in the criminal division of the parish courts for matters heard in the 2025 calendar year. The overall average number of case management dates per case is 4.57 (i.e. between 4 and 5) with a standard deviation of 1.16 across the courts sampled and a skewness of 1.36. Together, these results suggest that the average number of appearances per case meets the prescribed international standard of a maximum of 5 appearances per case, that a larger proportion of cases have less than the overall average number of case management dates and that there isn't on average a wide variation in the number of case management dates per case across the courts. Among the parish courts with the highest number of case management dates per cases for

matters heard in the 2025 calendar year are the Corporate Area Parish Court-Criminal Division, the Westmoreland and the Trelawny parish courts, while the Hanover, St. James, and St. Ann Parish Courts were among those with the lowest case management dates per case. In terms of cases disposed, the average case management dates for all cases resolved across all the parish courts combined in the 2025 calendar year was 3.80 with a standard deviation of 0.95.

Chapter 2.0: Case Demographics and Courtroom Activity

This chapter examines case demographics including age and gender distribution of offenders as well as a sample estimate of the geographical distribution of charges based on the police station where matters are reported. This section also examines the distribution of new cases heard in the year by the respective courtrooms and outstations in each parish.

Table 2.01: Sampling distribution of the most frequently occurring charges by gender for the year ended December 31, 2025

	Male		Female		Total	
Charge	Count	%	Count	%	Count	%
Assault occasioning bodily harm	3462	77.92	981	22.08	4443	100
Unlawful wounding	2385	79.63	610	20.37	2995	100
Malicious destruction of property	1524	78.44	419	21.56	1943	100
Possession of offensive weapon	1650	94.50	96	5.50	1746	100
Threat	1220	79.07	323	20.93	1543	100
Disorderly conduct	670	73.14	246	26.86	916	100
Assault at common law	808	88.40	106	11.60	914	100
Simple larceny	661	76.95	198	23.05	859	100
Possession of ganja	682	82.47	145	17.53	827	100
Dealing in ganja	575	81.10	134	18.90	709	100

*****The gender of offenders was not available for every matter that was filed in the parish courts hence a sample is used. Sample size (N) = 34,179**

The above table provides a sampling distribution of the most frequently occurring charges by gender in the year ended December 31, 2025. Based on the data shown in chart 2.02, it is not surprising that males account for the dominant proportion of all these charges. Among the charges listed with the greatest imbalance in the gender distribution are dealing in ganja, possession of ganja, and assault at common law for which over 80% of the persons charged were male. More particularly, it is seen that possession of an offensive weapon with 94.50% of the

persons charged being male had the most significant incidence of persons charged being male for the year. Simple larceny, disorderly conduct, and assault occasioning bodily harm saw the highest incidence of female involvement.

The below series of tables provide a sampling distribution of cases by assigned courtroom in the individual parish courts in the 2025 calendar year. These figures are derived from representative datasets from the respective courts and do not necessary add back to the total population of cases outlined in the first few tables of the report.

Table 2.02.01: Aggregate case statistics for each courtroom and outstation in the Parish of Westmoreland for the year ended December 31, 2025

Courtroom/Outstation	Number of new cases filed in 2025	Number of new cases disposed in 2025	Number of inactive cases in 2025	Proportion of new cases (%)	Case disposal rate (%)
Courtroom #1 (main courthouse)	1382	731	104	71.94	60.42
Courtroom #2 (main courthouse)	23	12	0	1.20	52.17
Courtroom #3 (main courthouse)	22	10	3	1.15	59.09
Lay Magistrates' Court (main courthouse)	107	58	2	5.57	56.07
Whithorn Outstation	365	229	16	19.00	67.12
Whithorn Outstation (Lay Magistrates')	22	10	2	1.15	54.55
Total/Weighted Average	1921	1050	127	100.00	61.27

Note: The dynamics of the movement of cases or matters between courtrooms relative to the case counting rules may result in variations from the results in table 1.0.

The above table summarizes the distribution of the movement of criminal cases filed in the 2025 calendar year at the Westmoreland Parish Court. In particular, it compares the relative proportions of new cases filed, which are accounted for by the different courtrooms and outstations in the parish and outlines the applicable disposal rates. The table separates Lay Magistrates' and night court cases heard in each of the relevant locations for ease of comparison.

The data shows decisively that cases entered in courtroom number 1 at the main courthouse and sittings at the Whithorn Outstation account for the highest share of new cases heard in the year with 1,382 (71.94%) and 365 (19%) cases respectively. Sittings at the Lay Magistrates' court at the main courthouse with 107 cases or 5.57% rank next. The number of cases heard in courtroom one (1,382 cases), increased by 130 cases or 10.38% above the 1,252 cases recorded in the similar 2024 calendar year. The case disposal rate decreased by 12.98 percentage points moving down to 60.42% compared to the 73.40% reported in the 2024 calendar year. In terms of cases disposed, sittings in courtroom number 1 with 731 cases accounted for the highest absolute share of cases disposed and had the second highest disposal rate of 60.42%. The outstation in Whithorn rank next with 229 disposed cases and recorded the highest disposal rate of 67.12%, which is 14.48 percentage points below the 81.60% recorded in the corresponding 2024 calendar year. The single outstation in Westmoreland accounted for 20.15% of the total sample of new cases heard, a decrease of 0.54 percentage points when compared to the 20.69% recorded in the corresponding 2024 calendar year. The main courthouse accounted for the remaining 79.85%, an increase of 0.54 percentage points when compared to the 79.31% recorded in 2024.

Table 2.02.02: Aggregate case statistics for each courtroom and outstation in the Corporate Area for the year ended December 31, 2025

Courtroom/Outstation	Number of new cases filed in 2025	Number of new cases disposed in 2025	Number of inactive cases in 2025	Proportion of new cases (%)	Case disposal rate (%)
Courtroom #1 (main courthouse)	4	2	0	0.08	50.00
Courtroom #2 (main courthouse)	4048	2078	701	85.67	68.65
Courtroom #3 (main courthouse)	4	1	2	0.08	75.00
Courtroom #4 (main courthouse)	3	1	0	0.06	33.33
Courtroom #6 (main courthouse)	313	53	8	6.62	19.49
Courtroom #7 (main courthouse)	5	1	2	0.11	60.00
Courtroom #8 (main courthouse)	2	1	0	0.04	50.00
Gordon Town Outstation	1	0	0	0.02	NA
Gun Court (main courthouse)	96	18	0	2.03	18.75
Lay Magistrates' Court (main courthouse)	248	161	34	5.25	78.63
Night Court (main courthouse)	1	0	0	0.02	NA
Total/Weighted Average	4725	2316	747	100.00	64.83

Note 1: The dynamics of the movement of cases or matters between courtrooms relative to the case counting rules may result in variations from the results in table 1.0.

The above table summarizes the distribution of the movement of cases filed in the year ended December 31, 2025 at the Corporate Area Court – Criminal Division. In particular, it compares the relative proportions of new cases filed, which are accounted for by the different courtrooms and outstations. Courtroom number 2 at the main courthouse accounted for the majority of new cases filed in the year with 4,048 cases or 85.67% of the total sample. Sittings in courtroom 6 at the main courthouse with 313 cases or roughly 6.62% follows this and Lay Magistrates’ sittings at the main courthouse with 248 cases or 5.25%, rounding off the top three proportion of new cases filed in the year. Courtroom number two at the main courthouse accounts for the largest absolute share of cases disposed in the 2025 calendar year with 2,078 cases and the third highest disposal rate of 68.65%. When compared to the corresponding 2024 calendar year, courtroom

number two also accounted for the largest absolute share of cases disposed with 2,172 cases and had a disposal rate of 80.61%. This represents a decrease of 94 cases disposed or a 4.33% decrease and an 11.96 percentage points decrease in the disposal rate. The main courthouse in Half-Way-Tree accounted for 99.98% of the total sample of new cases heard in the 2025 calendar year, while the Gordon Outstation accounted for 0.02%.

Table 2.02.03: Aggregate case statistics for each courtroom and outstation in the Parish of St. James for the year ended December 31, 2025

Courtroom/Outstation	Number of new cases filed in 2025	Number of new cases disposed in 2025	Number of inactive cases in 2025	Proportion of new cases (%)	Case disposal rate (%)
Adelphi Outstation	26	17	5	1.41	84.62
Courtroom #2 (main courthouse)	1753	1203	205	95.32	80.32
Courtroom #3 (main courthouse)	2	2	0	0.11	100.00
Cambridge Outstation	58	44	10	3.15	93.10
Total/Weighted Average	1839	1266	220	100.00	80.80

Note 1: There were 6 missing courtroom/Outstation entry therefore the number in this table may not equate to the table in 1.0.

Note 2: The dynamics of the movement of cases or matters between courtrooms relative to the case counting rules may result in variations from the results in table 1.0.

The above table summarizes the distribution of the movement of cases filed in the year ended December 31, 2025, at the St. James Parish Court. In particular, it compares the relative proportions of new cases filed, which are accounted for by the different courtrooms and outstations in the parish and outlines the disposal rates of the various courtrooms and outstations. The sample shows that courtroom number 2 at the main courthouse in Montego Bay accounts for the majority of new cases heard with 1,753 cases or 95.32% of the total sample, an increase of 6 cases or an 0.34% increase above the 1,747 cases recorded in the corresponding 2024 calendar year. This was followed by the Cambridge Outstation with 58 cases or 3.15% of

the total sample. Courtroom number 3 at the main courthouse had the highest disposal rate of 100%, despite its relatively low numbers, followed by the Cambridge Outstation with a disposal rate of 93.10%. The main courthouse in Montego Bay accounts for 95.53% of the new cases heard in the 2025 calendar year, 1.94 percentage points below the 93% recorded in corresponding 2024 calendar year. The remaining 4.57% was accounted for by the sole outstation (Cambridge).

Table 2.02.04: Aggregate case statistics for each courtroom and outstation in the Parish of St. Catherine for the year ended December 31, 2025

Courtroom/Outstation	Number of new cases filed in 2025	Number of new cases disposed in 2025	Number of inactive cases in 2025	Proportion of new cases (%)	Case disposal rate (%)
Courtroom #1 (Main Courthouse)	670	488	38	25.32	78.51
Courtroom #2 (Main Courthouse)	166	134	7	6.27	84.94
Courtroom #3 (Main Courthouse)	17	11	0	0.64	64.71
Courtroom #4 (Main Courthouse)	891	593	18	33.67	68.57
Courtroom #5 (Main Courthouse)	4	2	0	0.15	50.00
Courtroom #6 (Main Courthouse)	13	10	0	0.49	76.92
Lay Magistrates' Court (main courthouse)	90	42	12	3.40	60.00
Linstead Outstation (Courtroom #1)	432	337	17	16.33	81.94
Linstead Outstation (Lay Magistrates')	25	11	5	0.94	64.00
Old Harbour Outstation	231	180	9	8.73	81.82
Old Harbour Outstation (Lay Magistrates')	11	5	2	0.42	63.64
Portmore Outstation (Children's Court)	96	47	6	3.63	55.21
Total/Weighted Average	2646	1860	114	100.00	74.60

Note: The dynamics of the movement of cases or matters between courtrooms relative to the case counting rules may result in variations from the results in table 1.0.

The above table summarizes the distribution of the movement of cases filed in the year ended December 31, 2025 at the St. Catherine Parish Court. In particular, it compares the relative proportions of new cases filed, which are accounted for by the different courtrooms and outstations in the parish and outlines the applicable disposal rates. The table separates Lay Magistrates' and night court matters for the relevant locations for ease of comparisons. The data shows decisively that cases entered in courtroom number 4 at the main courthouse in Spanish Town and courtroom 1 at the main courthouse account for the largest share of new cases heard in the year with 33.67% and 25.32% of the cases respectively. Courtroom 1 at the outstation in Linstead with 16.33% of new cases filed ranks next. In terms of cases disposed, courtroom

number 4 at the main courthouse accounts for the highest absolute share of cases disposed with 593 cases. Courtroom 4 also had the sixth highest disposal rate of 68.57%, which is a decrease of 2.86 percentage points below the 71.43% recorded in the comparable 2024 calendar year. Sittings at courtroom 2 at the main courthouse had the highest disposal rate of 84.94%, followed by sittings in courtroom 1 at the Linstead Outstation with a disposal rate of 81.94% and sittings at the Old Harbour Outstation with a disposal rate of 81.82%. The main courthouse in Spanish Town accounts for 69.94% of the total sample of new cases heard in the 2025 calendar year, a decrease of 3.70 percentage points below the 73.64% recorded in the corresponding 2024 calendar year. The outstations combined accounted for the remaining 30.06%.

Table 2.02.05: Aggregate case statistics for each courtroom and outstation in the Parish of St. Thomas for the year ended December 31, 2025

Courtroom/Outstation	Number of new cases filed in 2025	Number of new cases disposed in 2025	Number of inactive cases in 2025	Proportion of new cases (%)	Case disposal rate (%)
Children's Court (main courthouse)	31	6	3	4.14	29.03
Courtroom #1 (main courthouse)	350	232	13	46.73	70.00
Courtroom #2 (main courthouse)	216	142	22	28.84	75.93
Yallahs Outstation	15	0	5	2.00	33.33
Yallahs Outstation (Lay Magistrates')	137	97	4	18.29	73.72
Total/Weighted Average	749	477	47	100.00	69.96

Note 1: There were 6 missing courtroom/Outstation entry therefore the number in this table may not equate to the table in 1.0.

Note 2: The dynamics of the movement of cases or matters between courtrooms relative to the case counting rules may result in variations from the results in table 1.0.

The above table summarizes the distribution of the movement of cases filed in the year ended December 31, 2025 at the St. Thomas Parish Court. The data shows decisively that cases entered in courtroom number 1 at the main courthouse and courtroom number 2 at the main courthouse

account for the highest share of new cases heard in the year with 46.73% and 28.84% respectively. Courtroom number 1 also accounts for the highest absolute share of cases disposed with 232 cases and the third highest disposal rate of 70%. When compared to the corresponding 2024 calendar year, this represents an increase of 5.71 percentage points above the disposal rate of 64.29% recorded. Sittings in courtroom 2 at the main courthouse with a disposal rate of 75.93% (compared to 57.21% in 2024) accounts for the highest disposal rate in the year. The main courthouse in Morant Bay accounted for 79.71% of the total new cases heard in the year, which is an increase of 2.63 percentage points when compared to the 77.08% recorded in the corresponding 2024 calendar year. The remaining 20.29% was accounted for by the Yallahs outstation, a decrease of 2.63 percentage points when compared to the 22.92% recorded in the corresponding 2024 calendar year.

Table 2.02.06: Aggregate case statistics for each courtroom and outstation in the Parish of Trelawny for the year ended December 31, 2025

Courtroom/Outstation	Number of new cases filed in 2025	Number of new cases disposed in 2025	Number of inactive cases in 2025	Proportion of new cases (%)	Case disposal rate (%)
Clarks Town Outstation (Courtroom #1)	322	187	22	36.80	64.91
Clarks Town Outstation (Courtroom #2)	5	2	1	0.57	60.00
Clarks Town Outstation (Lay Magistrates')	4	0	0	0.46	0.00
Courtroom #1 (main courthouse)	24	11	2	2.74	54.17
Falmouth Outstation	302	174	25	34.51	65.89
Falmouth Outstation (Lay Magistrates')	17	6	8	1.94	82.35
Ulster Spring Outstation	192	129	11	21.94	72.92
Ulster Spring Outstation (Lay Magistrates')	9	6	3	1.03	100
Total/Weighted Average	875	515	72	100.00	67.09

Note: The dynamics of the movement of cases or matters between courtrooms relative to the case counting rules may result in variations from the results in table 1.0.

The above table summarizes the distribution of the movement of cases filed in the year ended December 31, 2025 at the Trelawny Parish Court. The data shows decisively that cases entered in courtroom 1 at the Clarks Town Outstation accounts for the highest proportion of new cases heard in the year with 36.80% of the sample. The Falmouth Town Outstation and the Ulster Spring Outstation with 34.51% and 21.94% respectively, followed. Lay Magistrates' sittings at the Ulster Spring Outstation recorded the highest disposal rate of 100%, but had a relatively low number of cases, followed by Lay Magistrates' sittings at the Falmouth outstation and the Ulster Spring Outstation with disposal rates of 82.35% and 72.92% respectively. The outstations in the parish account for 97.26% of the new cases heard in the 2025 calendar year, while the remaining 2.74% were accounted for by the main courthouse. In the corresponding 2024 calendar year, the main courthouse accounted for 3.16% of the new cases heard, while the remaining 96.84% were accounted for by the outstations.

Table 2.02.07: Aggregate case statistics for each courtroom and outstation in the Parish of St. Mary for the year ended December 31, 2025

Courtroom/Outstation	Number of new cases filed in 2025	Number of new cases disposed in 2025	Number of inactive cases in 2025	Proportion of new cases (%)	Case disposal rate (%)
Children's Court (main courthouse)	29	17	0	3.48	58.62
Courtroom #1 (main courthouse)	491	325	15	58.87	69.25
Courtroom #3 (main courthouse)	3	1	0	0.36	33.33
Courtroom #2 (main courthouse)	3	3	0	0.36	100.00
Lay Magistrates' Court (main Courthouse)	70	56	5	8.39	87.14
Annotto Bay Outstation	123	101	0	14.75	82.11
Annotto Bay Outstation (Lay Magistrates')	4	4	0	0.48	100.00
Gayle Outstation	22	17	0	2.64	77.27
Gayle Outstation (Lay Magistrates')	3	2	0	0.36	66.67
Richmond Outstation	81	57	2	9.71	72.84
Richmond Outstation (Lay Magistrates')	5	5	0	0.60	100
Total/Weighted Average	834	588	22	100.00	73.14

Note 1: There were 5 missing courtroom/Outstation entry therefore the number in this table may not equate to the table in 1.0.

Note 2: The dynamics of the movement of cases or matters between courtrooms relative to the case counting rules may result in variations from the results in table 1.0.

The above table summarizes the distribution of new cases filed, disposed and inactive across the various courtrooms and outstations in the parish of St. Mary in the 2025 calendar year. The data shows decisively that courtrooms number 1 at the main courthouse and the Annotto Bay Outstation account for the highest share of new cases heard in the year, with 58.87% and 14.75% respectively of the total sample. Sittings at the Richmond Outstation with 9.71% and Lay Magistrates' sittings at the main courthouse with 8.39% rank next. In terms of cases disposed, courtroom number 1 in Port Maria accounts for the highest absolute share of cases disposed with 325 cases, roughly 39 more cases or a 13.64% improvement when compared to the corresponding 2024 calendar year and had a case disposal rate of 69.25%. Lay Magistrates'

sittings at the Richmond Outstation, Lay Magistrates' sittings at the Annotto Bay Outstation, and sittings in courtroom 2 at the main courthouse each had a disposal rate of 100%, despite relatively low numbers. The outstations in the parish account for a combined 28.54% of the total sample of new cases heard in the 2024 calendar year, a decrease of 1.69 percentage points below the 30.23% recorded in the corresponding 2024 calendar year. On the other hand, the main courthouse accounts for 71.46%, which is an increase of 1.69 percentage point above the 69.77% recorded in 2024.

Table 2.02.08: Aggregate case statistics for each courtroom and outstation in the Parish of Portland for the year ended December 31, 2025

Courtroom/Outstation	Number of new cases filed in 2025	Number of new cases disposed in 2025	Number of inactive cases in 2025	Proportion of new cases (%)	Case disposal rate (%)
Buff Bay Outstation (Children's Court)	8	3	0	0.75	37.50
Buff Bay Outstation (Courtroom #1)	173	119	16	16.14	78.03
Buff Bay Outstation (Courtroom #2)	1	1	0	0.09	100.00
Courtroom #1 (main courthouse)	707	475	41	65.95	72.98
Courtroom #2 (main courthouse)	43	33	1	4.01	79.07
Courtroom #3 (main courthouse)	40	18	0	3.73	45.00
Manchioneal Outstation	4	2	0	0.37	50.00
Lay Magistrates' Court (main courthouse)	96	54	5	8.96	61.46
Total/Weighted Average	1072	705	63	100.00	71.64

Note 1: There were 14 missing courtroom/Outstation entry therefore the number in this table may not equate to the table in 1.0.

Note 2: The dynamics of the movement of cases or matters between courtrooms relative to the case counting rules may result in variations from the results in table 1.0.

The above table summarizes the distribution of new cases filed, disposed and inactive across the various courtrooms and outstations in the parish of Portland in the 2025 calendar year. The data shows decisively that courtroom number 1 at the main court in Port Antonio accounts for the majority of new cases heard in the year, with 65.95% of the total sample. In the 2024 calendar

year, courtroom one also accounted for the majority of new cases heard with 62.41% of the sample of cases. Courtroom number 1 at the outstation in Buff Bay and Lay Magistrates' sittings at the main courthouse with 16.14% and 8.96% respectively of the total sample of the new cases heard in the period ranked next. In terms of cases disposed, courtroom number 1 in Port Antonio accounts for the highest absolute share of cases disposed with 475 cases, a 64.36% increase or 186 more cases compared to the 289 cases recorded in the corresponding 2024 calendar year; and had the fourth highest disposal rate of 72.98%. Sittings in Courtroom 2 at the Buff Bay Outstation and courtroom number one at the main courthouse with disposal rates of 100% and 79.07% respectively ranked first and second on this measure. The outstations in Portland account for a combined 17.35% of the new cases heard, which is a decrease of 15.53 percentage points below the 32.88% recorded in the corresponding 2024 calendar year. The main courthouse in Port Antonio accounts for the remaining 82.65%, which is an increase of 15.53 percentage above the 67.12% recorded in the 2024 calendar year.

Table 2.02.09: Aggregate case statistics for each courtroom and outstation in the Parish of Hanover for the year ended December 31, 2025

Courtroom/Outstation	Number of new cases filed in 2025	Number of new cases disposed in 2025	Number of inactive cases in 2025	Proportion of new cases (%)	Case disposal rate (%)
Courtroom #1 (main courthouse)	182	152	0	26.04	83.52
Courtroom #2 (main courthouse)	94	71	0	13.45	75.53
Courtroom #3 (main courthouse)	16	11	0	2.29	68.75
Ramble Outstation	35	32	2	5.01	97.14
Ramble Outstation (Lay Magistrates')	6	1	0	0.86	16.67
Sandy Bay Outstation (Courtroom #1)	120	102	2	17.17	86.67
Sandy Bay Outstation (Courtroom #2)	1	1	0	0.14	100.00
Sandy Bay Outstation (Lay Magistrates')	45	27	6	6.44	73.33
Green Island Outstation (courtroom #1)	110	98	0	15.74	89.09
Green Island Outstation (courtroom #2)	1	1	0	0.14	100.00
Green Island Outstation (Lay Magistrates')	18	10	2	2.58	66.67
Lay Magistrates' Court (main courthouse)	71	46	5	10.16	71.83
Total/Weighted Average	699	552	17	100.00	81.40

Note 1: There were 3 missing courtroom/Outstation entry therefore the number in this table may not equate to the table in 1.0

Note 2: The dynamics of the movement of cases or matters between courtrooms relative to the case counting rules may result in variations from the results in table 1.0.

The above table summarizes the distribution of new cases filed, disposed and inactive across the various courtrooms and outstations in the parish of Hanover in the 2025 calendar year. The data shows decisively that courtroom number 1 at the main courthouse accounts for the highest share of new cases heard in the year, with 26.04% of the total sample and is 3.76 percentage points below the 29.80% recorded in the corresponding 2024 calendar year. Courtroom one at the Sandy Bay Outstation and courtroom 1 at the Green Island Outstation with 17.17% and 15.74% respectively rank next. In terms of cases disposed, courtroom number 1 at the main courthouse accounts for the highest absolute share of cases disposed with 152 cases, a 15.08% decline or 27

less cases than the 179 cases recorded in the corresponding 2024 calendar year. Courtroom 1 at the main courthouse also recorded the sixth highest case disposal rate of 83.52%, which is a decrease of 8.36 percentage points below the 91.88% reported in the comparative 2024 calendar year. Despite the relatively low absolute numbers, courtroom 2 at the outstation in Sandy Bay and courtroom 2 at the outstation in Green Island recorded the highest disposal rate of 100% each. The outstations in the parish account for 48.08% of the new cases heard during the year, which is an increase of 0.58 percentage points above the 47.50% recorded in the 2024 calendar year. The main courthouse accounts for the remaining 51.92%, which is a decrease of 0.58 percentage points below the 52.50% when compared to 2024.

Table 2.02.10: Aggregate case statistics for each courtroom and outstation in the Parish of St. Ann for the Year ended December 31, 2025

Courtroom/Outstation	Number of new cases filed in 2025	Number of new cases disposed in 2025	Number of inactive cases in 2025	Proportion of new cases (%)	Case disposal rate (%)
St. Ann's Bay and the Claremont outstation					
Courtroom #1 (main courthouse)	429	280	70	33.94	81.59
Courtroom #2 (main courthouse)	322	208	35	25.47	75.47
Claremont Outstation	97	69	3	7.67	74.23
Claremont Outstation (Lay Magistrates')	33	19	8	2.61	81.82
Brown's Town					
Courtroom #1 (main courthouse)	302	157	37	23.89	64.24
Lay Magistrates' Court	81	17	30	6.41	58.02
Total/Weighted Average	1264	750	183	100.00	73.81

Note 1: There were 193 missing courtroom/Outstation entries therefore the number in this table may not equate to the table in 1.0.

Note 2: The dynamics of the movement of cases or matters between courtrooms relative to the case counting rules may result in variations from the results in table 1.0.

The above table summarizes the distribution of new cases filed, disposed and inactive across the various courtrooms and outstations in the parish of St. Ann in the year ended December 31, 2025.

The data shows that courtroom 1 in St. Ann's Bay (the main court) and courtroom 2 in St. Ann's Bay (the main court) account for the largest shares of new cases heard in the year with 33.94% and 25.47% respectively of the total sample. When compared to the 2024 calendar year, the data shows that courtroom 1 in St. Ann's Bay (main courthouse) and courtroom 2 in St. Ann's Bay (main courthouse) were also accounted for the two largest shares of new cases heard in the year with 31.52% and 24.60% respectively of the total sample. In terms of cases disposed, courtroom 1 at the main courthouse accounts for the highest absolute share of cases disposed with 280 cases and had a disposal rate of 81.59%. Lay Magistrates' sittings at the Claremont Outstation with 81.82%, and courtroom 2 at the main courthouse with 75.47% were the highest disposal

rates for the year. As a whole, the Brown's Town court accounted for approximately 30.30% of the new cases filed in the parish of St. Ann in the 2025 calendar year, which is 3.76 percentage points above the 26.54% recorded in the corresponding 2024 calendar year. The St. Ann's Bay courthouse accounts for 59.42% of the new cases heard in the year and the Clarendon outstation accounted for the remaining 10.28% of new cases.

Table 2.02.11: Aggregate case statistics for each courtroom and outstation in the Parish of Clarendon for year ended December 31, 2025

Courtroom/Outstation	Number of new cases filed in 2025	Number of new cases disposed in 2025	Number of inactive cases in 2025	Proportion of new cases (%)	Case disposal rate (%)
Courtroom #1 (main courthouse)	592	355	32	43.50	65.37
Courtroom #2 (main courthouse)	133	73	3	9.77	57.14
Courtroom #3 (main courthouse)	69	33	6	5.07	56.52
Lionel Town Outstation	255	168	16	18.74	72.16
Chapelton Outstation	165	106	14	12.12	72.73
Frankfield Outstation	60	23	12	4.41	58.33
Lay Magistrates' Court (main courthouse)	87	56	22	6.39	89.66
Total/Weighted Average	1361	814	105	100.00	67.52

Note 1: There were 12 missing courtroom/Outstation entries therefore the number in this table may not equate to the table in 1.0.

Note 2: The dynamics of the movement of cases or matters between courtrooms relative to the case counting rules may result in variations from the results in table 1.0.

The above table summarizes the distribution of new cases filed, disposed and inactive across the various courtrooms and outstations in the parish of Clarendon in the year ended December 31, 2025. The available data shows decisively that courtroom number 1 in May Pen accounted for highest share of new cases heard in the year, with 43.50% of the total sample. The Lionel Town outstation account for the next highest shares of new cases heard in the year with 18.74% of the total sample. In terms of cases disposed, courtroom number 1 at the main courthouse accounts

for the highest absolute share of cases disposed with 355 cases, a decrease of 26.95% or 131 cases less than the 486 disposed cases recorded for this courtroom in the 2024 calendar year and had the fourth highest disposal rate of 65.37%. Lay Magistrates' sittings at the main courthouse with a disposal rate of 89.66% had the highest disposal rate followed by the Chapelton Outstation with a disposal rate of 72.73%. The main courthouse in May Pen accounted for 64.73% of cases heard in year, while the remaining 35.27% was accounted for by the outstations, which is an increase of 1.31 percentage points more than the 33.96% recorded in 2024.

Table 2.02.12: Aggregate case statistics for each courtroom and outstation in the Parish of Manchester for the year ended December 31, 2025

Courtroom/Outstation	Number of new cases filed in 2025	Number of new cases disposed in 2025	Number of inactive cases in 2025	Proportion of new cases (%)	Case disposal rate (%)
Courtroom #1 (main courthouse)	329	217	10	22.91	69.00
Courtroom #2 (main courthouse)	276	149	21	19.22	61.59
Courtroom #3 (main courthouse)	27	15	1	1.88	59.26
Cottage Outstation	33	21	3	2.30	72.73
Cottage Outstation (Lay Magistrates')	19	3	0	1.32	15.79
Christiana Outstation	132	72	9	9.19	61.36
Christiana Outstation (Lay Magistrates')	56	29	5	3.90	60.71
Cross Keys Outstation	52	28	5	3.62	63.46
Cross Keys Outstation (Lay Magistrates')	13	7	2	0.91	69.23
Lay Magistrates' Court (main courthouse)	294	192	31	20.47	75.85
Porus Outstation	60	39	1	4.18	66.67
Porus Outstation (Lay Magistrates')	16	13	0	1.11	81.25
Spalding Outstation	100	43	16	6.96	59.00
Spalding Outstation (Lay Magistrates')	13	5	1	0.91	46.15
Tax Court (main courthouse)	16	0	0	1.11	NA
Total/Weighted Average	1436	833	105	100.00	65.32

Note 1: There were 35 missing courtroom/Outstation entry therefore the number in this table may not equate to the table in 1.0.

Note 2: The dynamics of the movement of cases or matters between courtrooms relative to the case counting rules may result in variations from the results in table 1.0

The above table summarizes the distribution of new cases filed, disposed and inactive across the various courtrooms and outstations in the parish of Manchester in the year ended December 31, 2025. The data shows courtroom number one at the main courthouse accounted for the highest share of new cases heard in the year, with 329 cases or 22.91% of the total sample. Lay Magistrates' sittings at the main courthouse and courtroom 2 at the main courthouse account for the next highest share of new cases heard in the year with 20.47% and 19.22% respectively of the total sample. In terms of the case disposal rate, Lay Magistrates' sittings at the Porus Outstation recorded the highest disposal rate of 81.25%, followed by Lay Magistrates' sittings at

the main courthouse with 75.85% and Cottage Outstation with 72.73%. The main courthouse in Mandeville accounts for 65.59% of the total sample of new cases heard during the 2025 calendar year, which is a decrease of 1.16 percentage points when compared to the 66.75% recorded in the 2024 calendar year. The remaining 34.41% was accounted for by the various outstations.

Table 2.02.13: Aggregate case statistics for each courtroom and outstation in the Parish of St. Elizabeth for the year ended December 31, 2025

Courtroom/Outstation	Number of new cases filed in 2025	Number of new cases disposed in 2025	Number of inactive cases in 2025	Proportion of new cases (%)	Case disposal rate (%)
Balaclava Outstation (Courtroom #1)	167	86	4	20.98	53.89
Balaclava Outstation (Courtroom #2)	11	0	3	1.38	27.27
Courtroom #1 (main courthouse)	112	103	0	14.07	91.96
Courtroom #2 (main courthouse)	1	0	0	0.13	NA
Lay Magistrates' Court (main courthouse)	8	1	1	1.01	25.00
Santa Cruz Outstation (courtroom #1)	77	25	5	9.67	38.96
Santa Cruz Outstation (courtroom #2)	420	326	14	52.76	80.95
Total/ Weighted Average	796	541	27	100.00	71.36

Note 1: There were 6 missing courtroom/Outstation entry therefore the number in this table may not equate to the table in 1.0.

Note 2: The dynamics of the movement of cases or matters between courtrooms relative to the case counting rules may result in variations from the results in table 1.0.

The above table summarizes the distribution of new cases filed, disposed and inactive across the various courtrooms and outstations in the parish of St. Elizabeth in the year ended December 31, 2025. The data shows courtroom number two at the Santa Cruz Outstation accounted for the majority of new cases heard in the year, with 420 cases or 52.76% of the total sample. Sittings at courtroom 1 at the Balaclava Outstation and sittings at courtroom 1 at the main courthouse account for the next highest share of new cases heard in the year with 20.98% and 14.07% respectively of the total sample. In terms of the case disposal rate, courtroom number one at the main courthouse recorded the highest disposal rate of 91.96%, followed by courtroom 2 at the

Santa Cruz Outstation with 80.95%, and courtroom number 1 at the Balaclava Outstation with 53.89%. The outstations in the parish accounts for 84.79% of the total sample of new cases heard during the 2025 calendar year, while the remaining 15.21% was accounted for by the main courthouse in Black River.

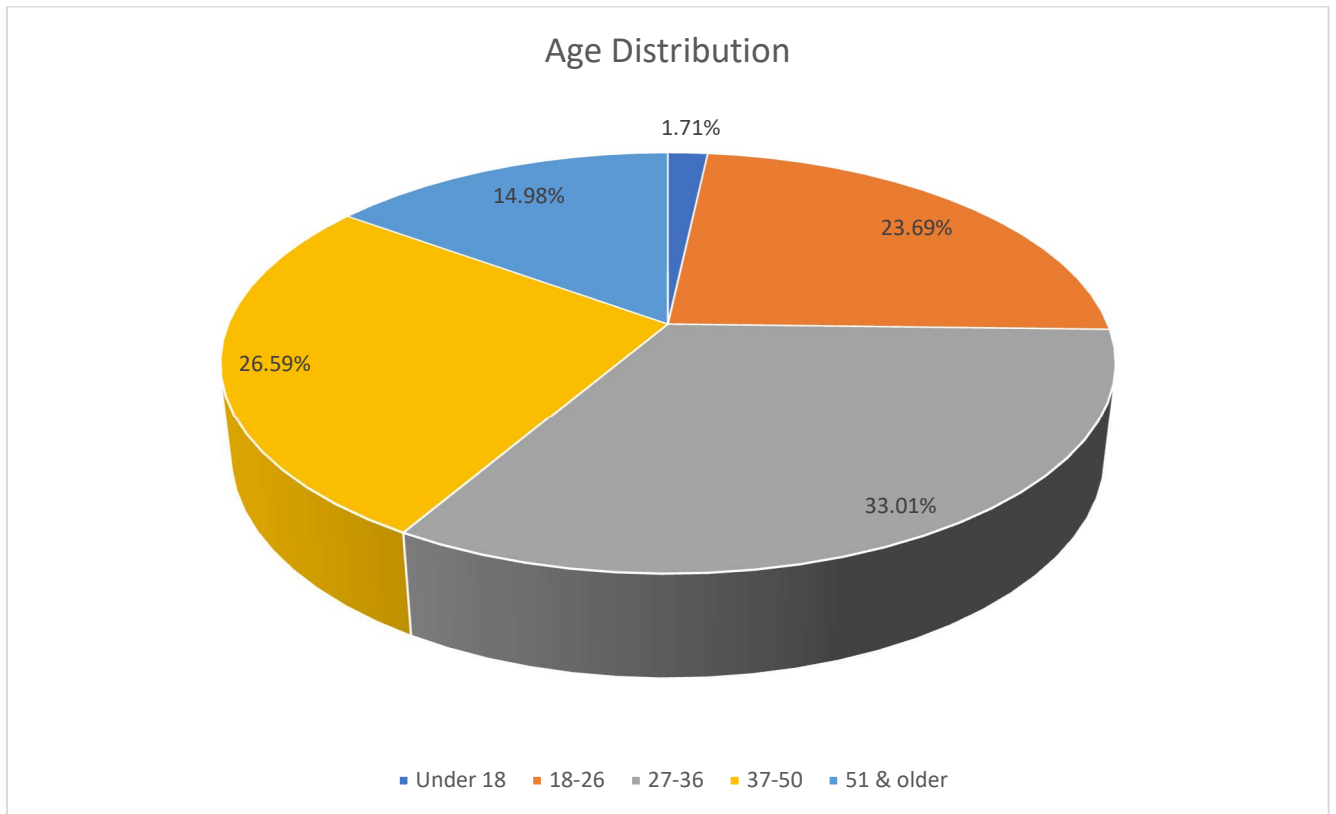
Table 2.02.14: proportion of cases heard at the main court and outstation across all parish courts for the year ended December 31, 2025

Parish	Main Court 2025 (%)	Outstation 2025 (%)
Westmoreland	79.85	20.15
Corporate Area – Criminal Division	99.98	0.02
St. James	95.43	4.57
St. Catherine	69.94	30.06
St. Thomas	79.71	20.29
Trelawny	2.74	97.26
St. Mary	71.46	28.54
Portland	82.65	17.35
Hanover	51.92	48.08
St. Ann	59.42	40.58
Clarendon	64.73	35.27
Manchester	65.59	34.41
St. Elizabeth	15.21	84.79
Simple Averages	64.51	35.49

The above table provides a proxy summary of the distribution of the utilization of the main courthouse locations and combined outstation usage in the hearing of new criminal cases filed. It is seen that 64.51% of new cases filed were entered for initial hearing in the main courthouse locations, while 35.49% were allocated for outstations. There are significant variances in the extent of main courthouse and outstation usage for the hearing of criminal matters across the parishes. It is seen, for example, that in parishes such as Corporate Area (Kingston and St. Andrew), St. James, Portland, Westmoreland, and St. Thomas, in excess of 75% of the new cases filed were entered for initial hearing, with the usage being particularly acute in the Corporate

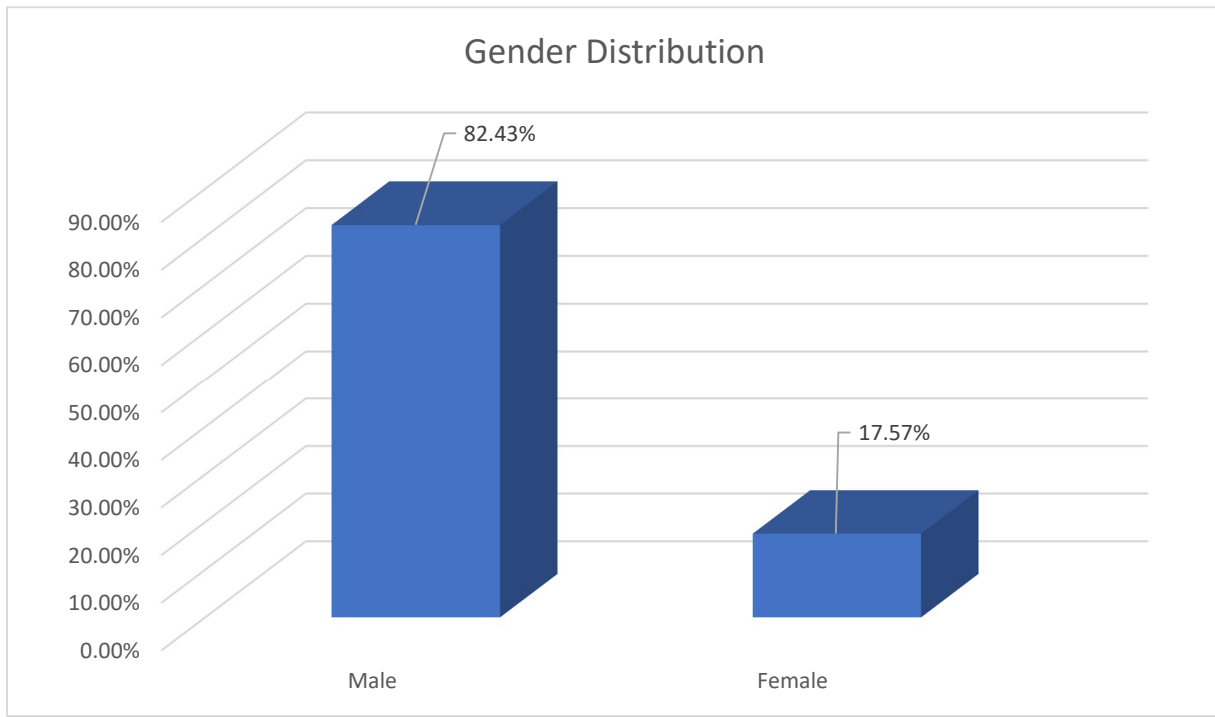
Area Court Criminal Division, which had 99.98% of cases entered for initial hearing at the main courthouse. On the contrary, there are parishes where the level of outstation usage competes with or outruns the usage of the main courthouse in the hearing of criminal cases filed. Trelawny is a good example of courts with significant outstation usage, registering over 90% for initial hearing of new criminal cases filed in the year ended December 31, 2025. There may be opportunities for greater utilization of outstations to carry the caseload in some parishes, but such precise determinations require further analyses of total 'demand and supply, in each location.

Chart 2.01: Aggregate age distribution of persons charged for all parish courts for the year ended December 31, 2025



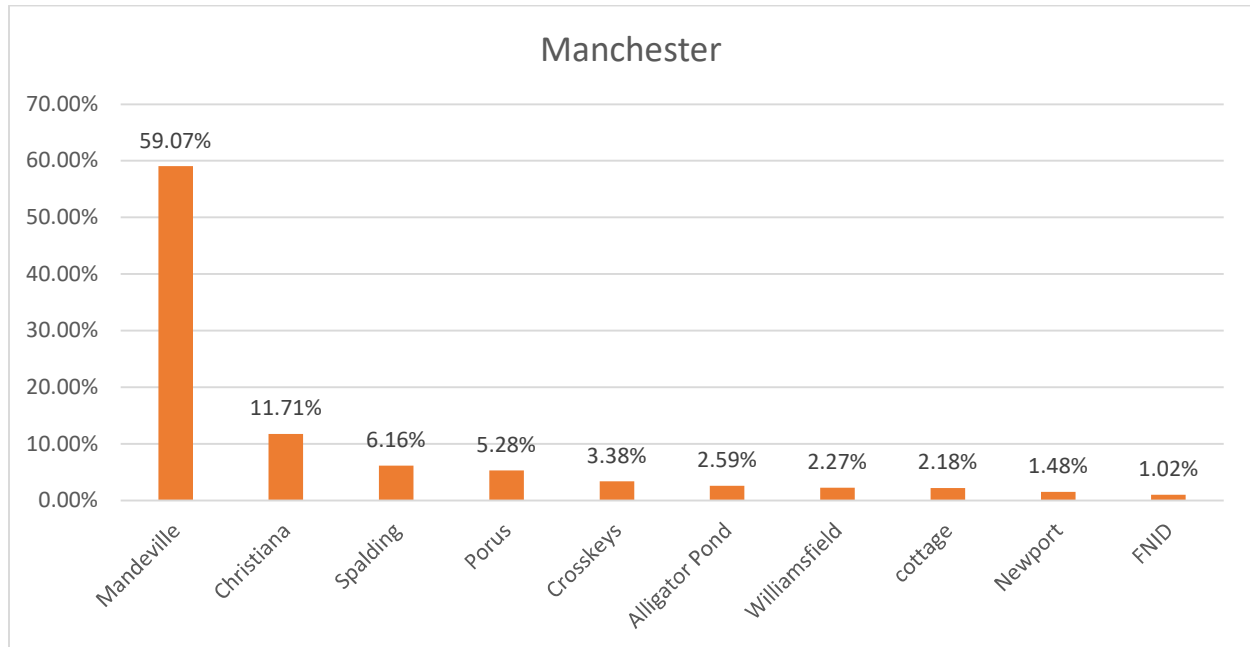
The above chart summarizes the age distribution of persons charged and brought before the criminal division of the parish courts in the 2025 calendar year. It is shown that the 27 - 36 age group with 33.01% accounted for the largest share of the persons charged, followed by the 37-50 age group with 26.59%. The lowest shares were attributed to the under 18 age group with 1.71% and 51 and over age group with 14.98%. The remaining proportion was accounted for by the 18-26 age group with 23.69% of the total sample.

Chart 2.02: Aggregate gender distribution of persons charged for the year ended December 31, 2025



The above chart shows that the overwhelming majority of persons charged for the 2025 calendar year were male, accounting for roughly 82.43% of the total sample, while females accounted for approximately 17.57%. The gender distribution of persons charged during the 2025 calendar year was broadly similar to the breakdown for the 2024 calendar year which had a male to female ratio of approximately 80.73% to 19.27%.

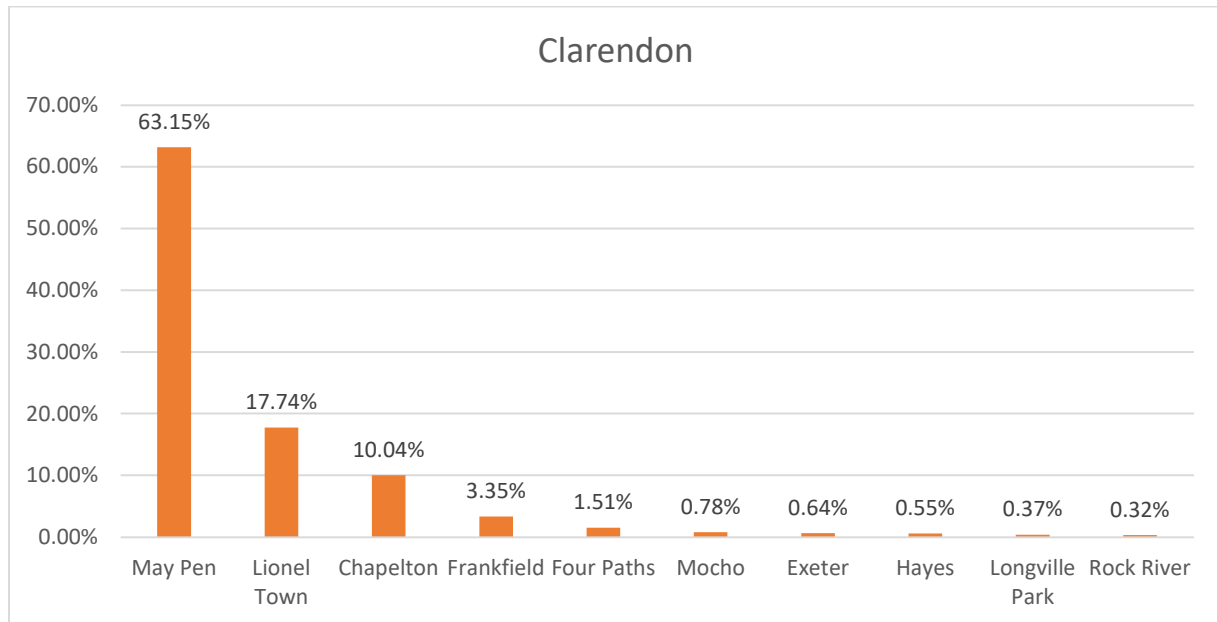
Chart 2.03.01: Distribution of criminal charges by the police station of origin at the Manchester Parish Court for the year ended December 31, 2025



The above chart shows the distribution of charges at the Manchester Parish Court using the police stations at which the matters were reported. The data available from 2,160 records indicate that for the 2025 calendar year the majority of charges, 59.07%, which were brought before the Court, were reported in the Mandeville Police Station. This was followed by the Christiana Police Station, which accounts for 11.71% of the total sample of matters reported. The Spalding police station rounded off the top three with 6.16%. In the corresponding 2024 calendar year, the top three comprised of the Mandeville Police Station, the Christiana Police Station, and the Spalding Police Station.

This data provides important insights into the geographical distribution of criminal offence committed in the Parish

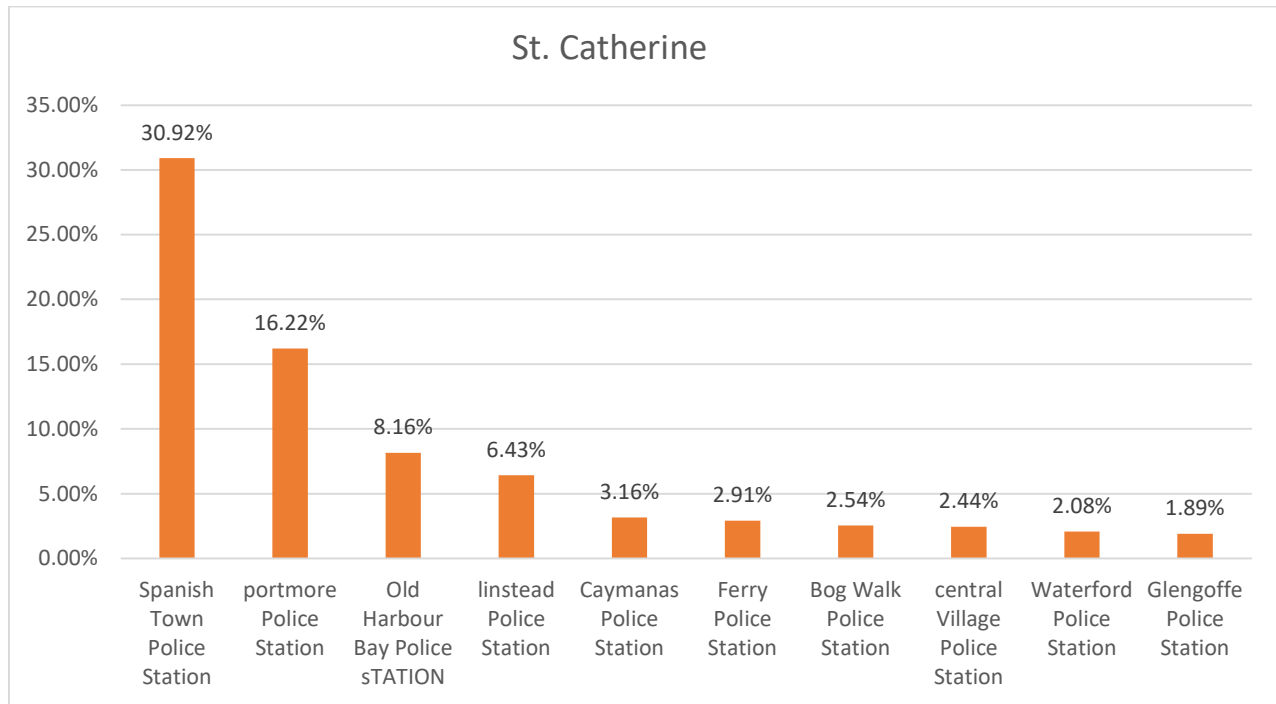
Chart 2.03.02: Distribution of criminal charges by the police station of origin at the Clarendon Parish Court for the year ended December 31, 2025



The above chart shows the distribution of criminal charges filed at the Clarendon Parish Court using the police stations at which the matters were reported. The data available from 2,182 records indicate that for the 2025 calendar year, the majority of criminal matters, 63.15%, which were brought before the Court, were reported in the May Pen Police Station. This was followed by the Lionel Town Police Station which accounts for 17.74% of the total sample matters reported. The top three was rounded off by the Chapelton Police Station with 10.04%. In the previous 2024 calendar year, the top three comprised of the May Pen Police Station, the Lionel Town and the Chapleton Police Station.

This data provides important insights into the geographical distribution of criminal offences committed in the Parish

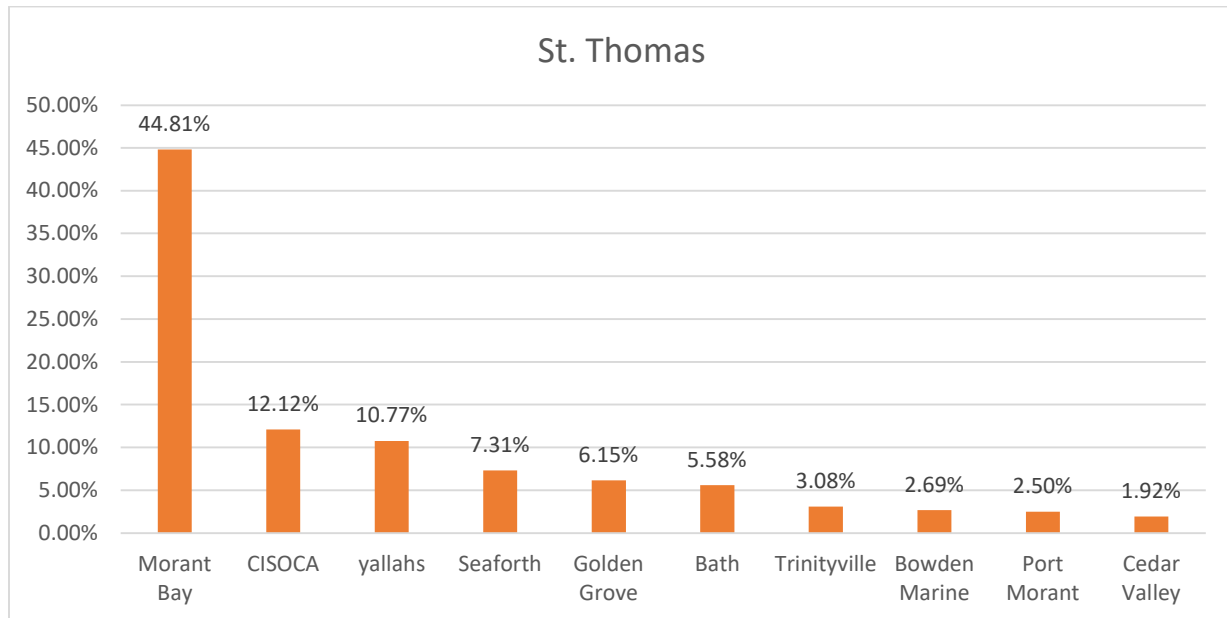
Chart 2.03.03: Distribution of criminal charges by the police station of origin at the St. Catherine Parish Court for the year ended December 31, 2025



The above chart shows the distribution of criminal charges filed at the St. Catherine Parish Court using the police stations at which the matters were reported. The data available from 4,803 records indicate that for the 2025 calendar year, the largest proportion of criminal matters, 30.92%, which were brought before the Court, were reported in the Spanish Town Police Station. This was followed by the Portmore Police Station which accounts for 16.22% of the total sample of matters reported. The top three was rounded off by Old Harbour Police Station with 8.16%. In the previous 2024 calendar year, the top three comprised of the Spanish Town Police Station, the Portmore and the Old Harbour Police Station.

This data provides important insights into the geographical distribution of criminal offences committed in the Parish.

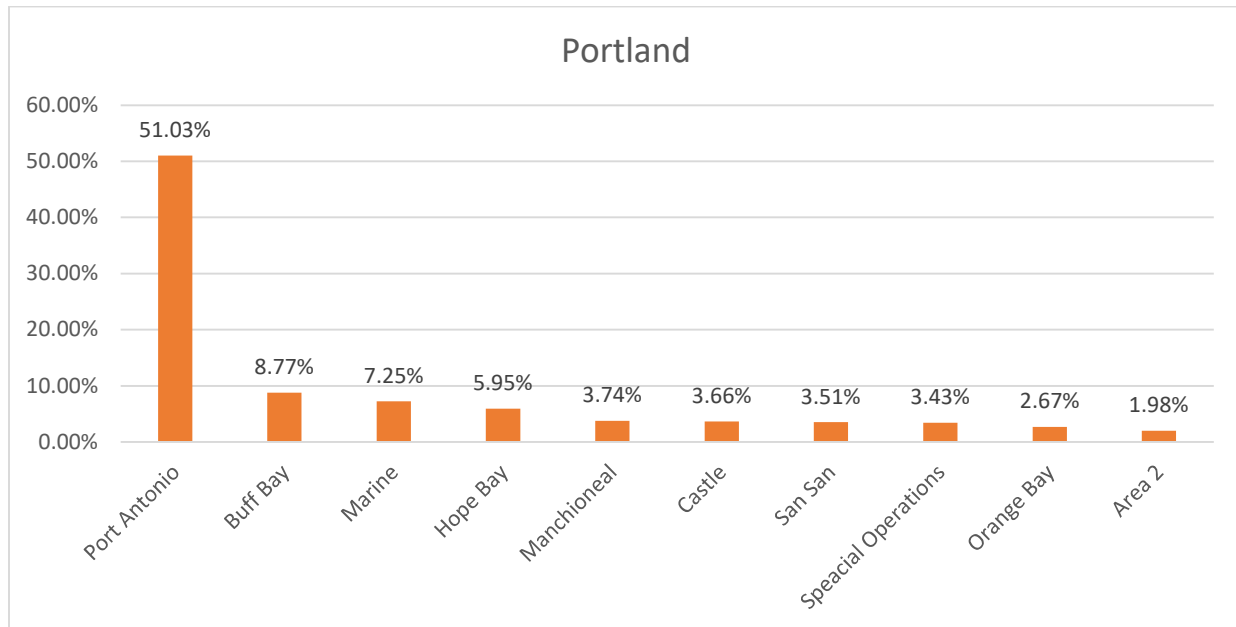
Chart 2.03.04: Distribution of criminal charges by the police station of origin at the St. Thomas Parish Court for the year ended December 31, 2025



The above chart shows the distribution of criminal charges filed at the St. Thomas Parish Court using the police stations at which the matters were reported. The data available from 520 records indicate that for the 2025 calendar year, the highest proportion of criminal matters, 44.81%, which were brought before the Court, were reported in the Morant Bay Police Station. This was followed by C.I.S.O.C.A. which accounts for 12.12% of the total sample of matters reported. The top three was rounded off by the Yallahs Police Station with 10.77%. In the previous 2024 calendar year, the top three comprised of the Morant Bay Police Station, the Yallahs Police Station and the Golden Grove Police Station.

This data provides important insights into the geographical distribution of criminal offences committed in the Parish.

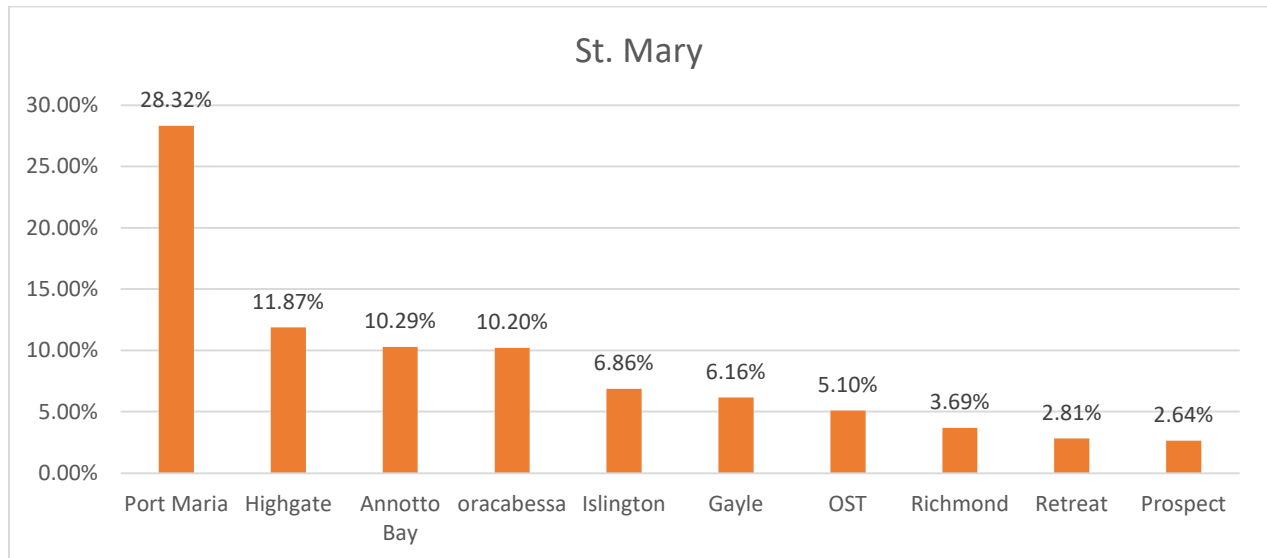
Chart 2.03.05: Distribution of criminal charges by the police station of origin at the Portland Parish Court for the year ended December 31, 2025



The above chart shows the distribution of criminal charges filed at the Portland Parish Court using the police stations at which the matters were reported. The data available from 1,311 records indicate that for the 2025 calendar year, the majority of criminal matters, 51.03%, which were brought before the Court, were reported in the Port Antonio Police Station. This was followed by the Buff Bay Police Station, which accounts for 8.77% of the total sample matters reported. The top three was rounded off by the Marine Police with 7.25%. In the previous 2024 calendar year, the top three comprised of the Port Antonio Police Station, the Manchioneal Police Station and the Buff Bay Police Station.

This data provides important insights into the geographical distribution of criminal offences committed in the Parish.

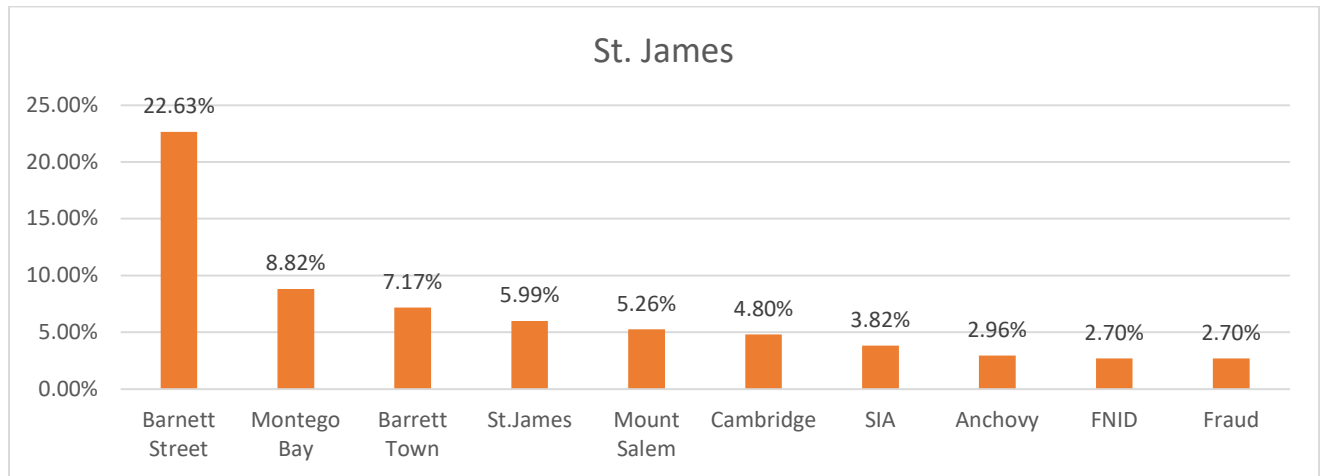
Chart 2.03.06: Distribution of criminal charges by the police station of origin at the St. Mary Parish Court for year ended December 31, 2025



The above chart shows the distribution of criminal charges filed at the St. Mary Parish Court using the police stations at which the matters were reported. The data available from 1,137 records indicate that for the 2025 calendar year, the largest proportion of criminal matters, 28.32%, which were brought before the Court, were reported in the Port Maria Police Station. This was followed by the Highgate Police Station which accounts for 11.87% of the total sample of matters reported. The top three was rounded off by the Annotto Bay Police Station with 10.29%. In the previous 2024 calendar year, the top three comprised of the Port Maria Police Station, the Annotto Bay Police Station and the Islington Police Station.

This data provides important insights into the geographical distribution of criminal offences committed in the Parish.

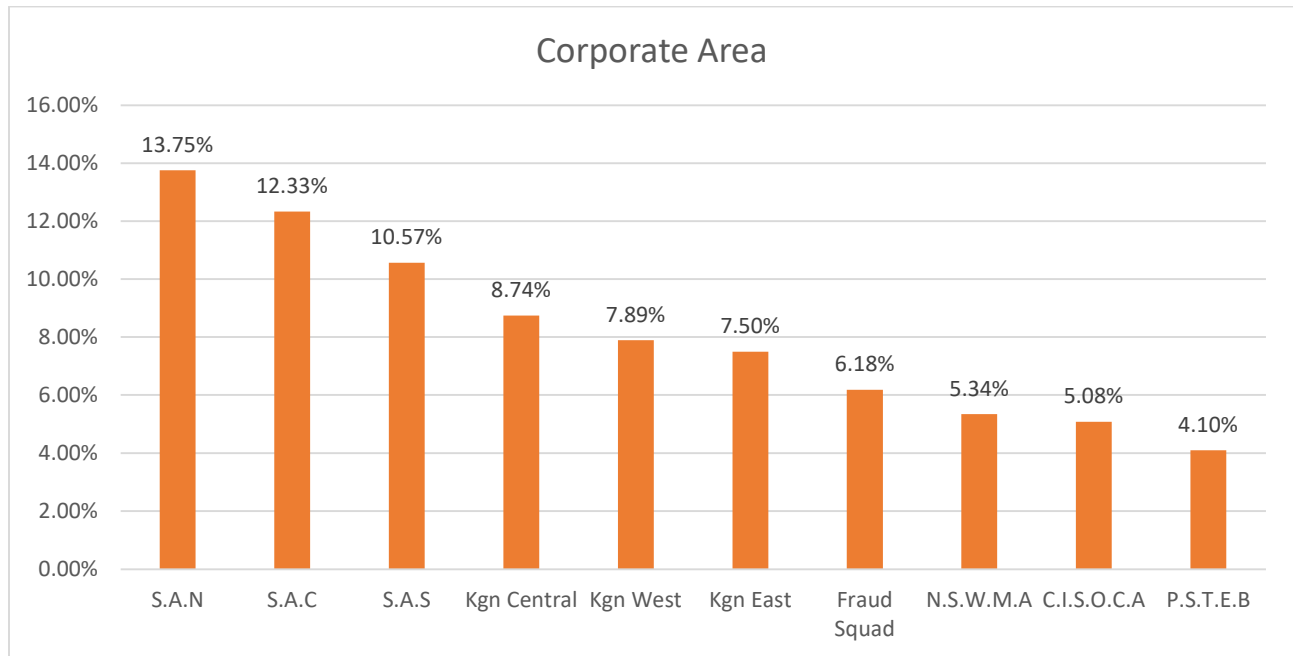
Chart 2.03.07: Distribution of criminal charges by the police station of origin at the St. James Parish Court for the year ended December 31, 2025



The above chart shows the distribution of criminal charges filed at the St. James Parish Court using the police stations at which the matters were reported. The data available from 1,520 records indicate that for the 2025 calendar year, the largest proportion of criminal matters, 22.63%, which were brought before the Court, were reported in the Barnett Street Police Station. This was followed by the Montego Bay Police Station, which accounts for 8.82% of the total sample of matters reported. The top three was rounded off by the Barrett Town Police Station with 7.17%. In the previous 2024 calendar year, the top three comprised of the Barnett Street Police Station, the Montego Bay Police station and the Sangster's International Airport Police Station.

This data provides important insights into the geographical distribution of criminal offences committed in the Parish.

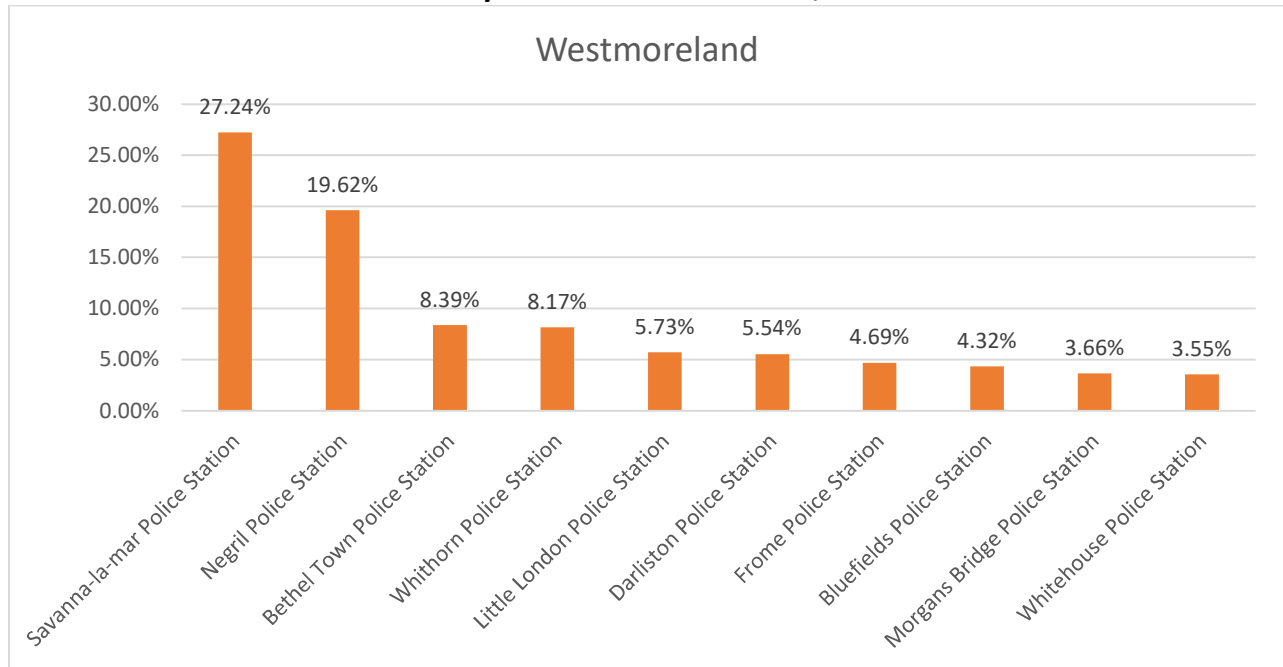
Chart 2.03.08: Distribution of criminal charges by the police station of origin at the Corporate Area Criminal Parish Court for the year ended December 31, 2025



The above chart shows the distribution of criminal charges filed at the Corporate Area Parish Court using the police stations at which the matters were reported. The data available from 8,441 records indicate that for the 2025 calendar year, the highest proportion of criminal matters, 13.75%, which were brought before the Court, were reported in the St. Andrew North Police Station. This was followed by the St. Andrew Central Police Station which accounts for 12.33% of the sample matters reported. The top three was rounded off by the St. Andrew South Police Station with 10.57%. In the previous 2024 calendar year, the top three comprised of the Kingston Central Police Station, the St. Andrew Central Police Station and the N.S.W.M.A Police.

This data provides important insights into the geographical distribution of criminal offences committed in the Parish.

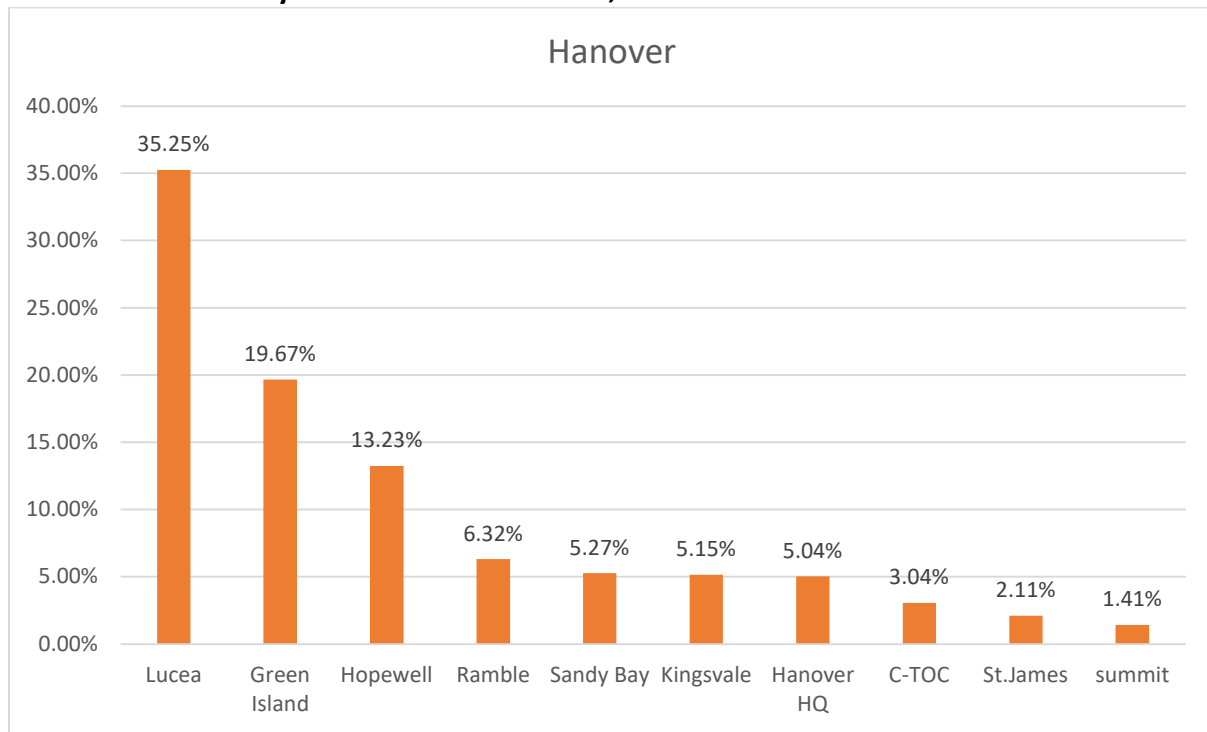
Chart 2.03.09: Distribution of criminal charges by the police station of origin at the Westmoreland Parish Court for the year ended December 31, 2025



The above chart shows the distribution of criminal charges filed at the Westmoreland Parish Court using the police stations at which the matters were reported. The data available from 2,706 records indicate that for the 2025 calendar year, the largest proportion of criminal matters, 27.24%, which were brought before the Court, were reported in the Savanna-la-mar Police Station. This was followed by the Negril Police Station which accounts for 19.62% of the total sample of matters reported. The top three was rounded off by the Bethel Police Station with 8.39%. In the previous 2024 calendar year, the top three comprised of the Savanna-la-mar Police Station, the Negril Police Station and Bethel Town Police Station.

This data provides important insights into the geographical distribution of criminal offences committed in the Parish.

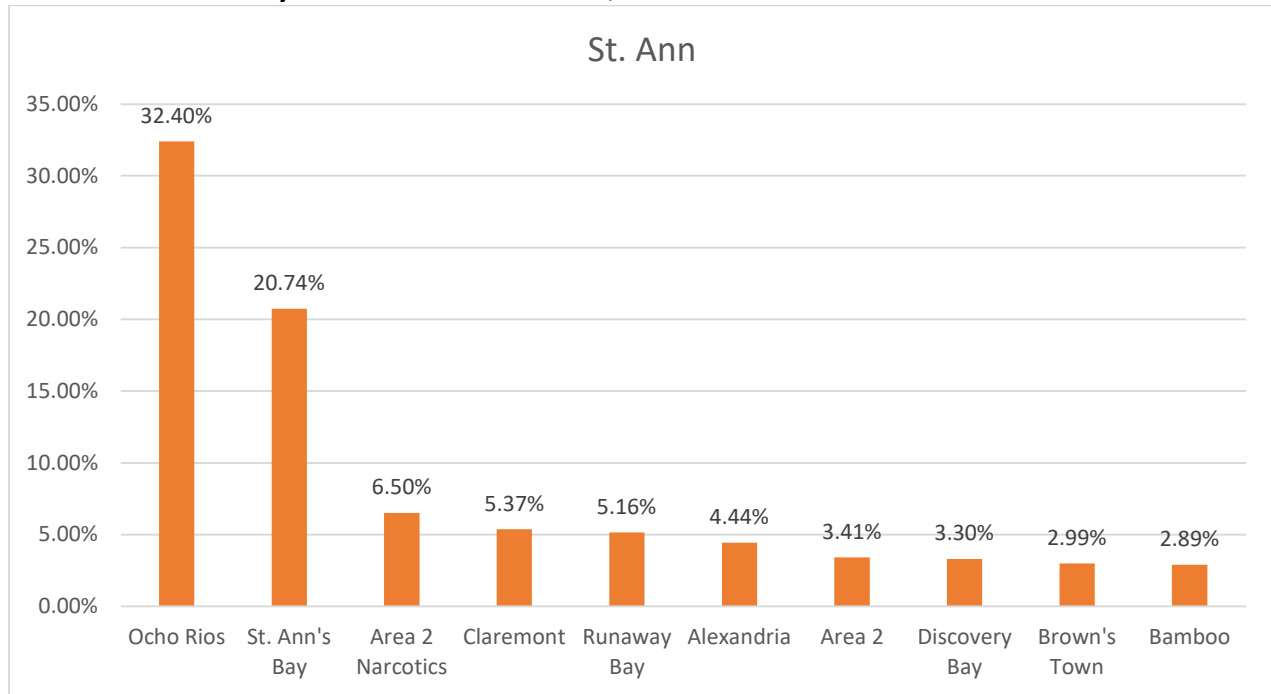
Chart 2.03.10: Distribution of criminal charges by the police station of origin at the Hanover Parish Court for the year ended December 31, 2025



The above chart shows the distribution of criminal charges filed at the Hanover Parish Court using the police stations at which the matters were reported. The data available from 854 records indicate that for the 2025 calendar year, the largest proportion of criminal matters, 35.25%, which were brought before the Court, were reported in the Lucea Police Station. This was followed by the Green Island Police Station, which accounts for 19.67% of the sample of matters reported. The top three was rounded off by the Hopewell Police Station with 13.23%. In the previous 2024 calendar year, the top three comprised of the Lucea Police Station, Green Island Police Station and the Ramble Police Station.

This data provides important insights into the geographical distribution of criminal offences committed in the Parish.

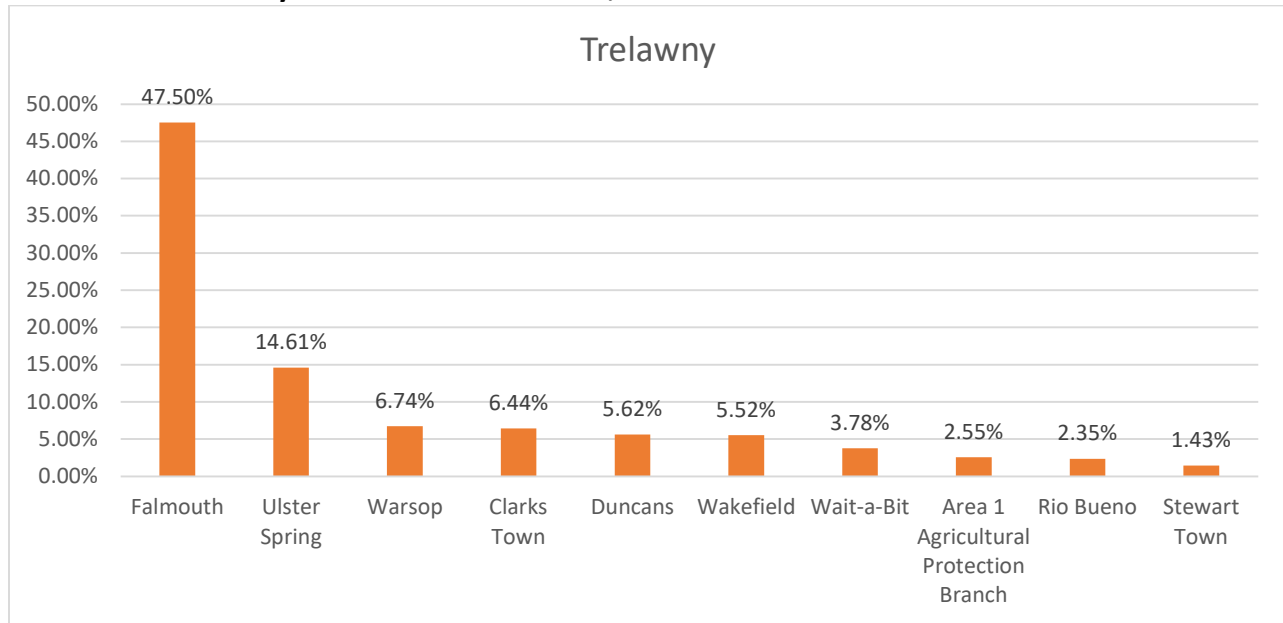
Chart 2.03.11: Distribution of criminal charges by the police station of origin at the St. Ann Parish Court for the year ended December 31, 2025



The above chart shows the distribution of criminal charges filed at the St. Ann Parish Court using the police stations at which the matters were reported. The data available from 969 records indicate that for the 2025 calendar year, the largest proportion of criminal matters, 32.40%, which were brought before the Court, were reported in the Ocho Rios Police Station. This was followed by the St. Ann's Bay Police Station which accounts for 20.74% of the total sample matters reported. The top three was rounded off by the Area 2 Narcotics Police with 6.50%. In the previous 2024 calendar year, the top three comprised of the Ocho Rios Police Station, the St. Ann's Bay Police Station and the Area 2 Narcotics Police Station.

This data provides important insights into the geographical distribution of criminal offences committed in the Parish.

Chart 2.03.12: Distribution of criminal charges by the police station of origin at the Trelawny Parish Court for the year ended December 31, 2025



The above chart shows the distribution of charges field at the Trelawny Parish Court, using the police stations at which the matters were reported. The data available from 979 records indicate that for the 2025 calendar year, the highest proportion of charges, 47.50%, which were brought before the Court, were reported in the Falmouth Police Station. This was followed by the Ulster Spring Police Station, which accounts for 14.61% of total sample of matters reported. The Warsop Police station rounded off the top three with 6.74%. In the previous 2024 calendar year, the top three comprised of the Falmouth Police Station, Clarks Town Police Station and Warsop Police Station.

This data provides important insights into the geographical distribution of criminal offences committed in the Parish.

Inferential Statistics and Conclusion

The 2025 calendar year represents the continuation of an impressive trend in the criminal division of the Parish Courts where a steady state equilibrium average case clearance rate of over 100% and net case backlog rate of a little above 2.0% has been sustainably achieved. With this kind of consistency in output, the criminal division of the Parish Courts is by all accounts among the top performing in the Caribbean and Latin American region at present. Among the key highlights from the yearly statistical report for the 2025 calendar year is that the criminal division of the Parish Courts as a whole recorded an overall case clearance rate of 103.44%, with ten (10) of the thirteen courts attaining or exceeding the international standard on this metric. The overall net case backlog rate for cases over 24 months old in the courts is above 2% at 2.16%, with the Hanover, Westmoreland and St. Catherine Parish Courts having near zero net backlog rates. The overall gross case backlog rate which takes into account inactive cases, decreased by 0.09 percentage points to 15.89%, reflecting a general decrease in the inactive caseload in the criminal division of the Parish Courts.

The overall net case backlog rate for cases over 20 months old¹ in the courts is above 2% at 2.29%, with the Hanover, St. Catherine and Westmoreland Parish Courts having near zero net backlog rates. The overall gross case backlog rate for cases above 20 months which takes into account inactive cases as at the 2025 calendar year was 16.42%. The overall time taken to dispose cases in the criminal division of the Parish Courts in the 2025 calendar year is roughly 15.5 months, with the average time taken to dispose cases in some Parish Courts such as

¹ Effective December 1, 2023

20 months is considered the maximum time that any criminal case should take to be disposed, regardless of complexity dynamics. Hence, any unresolved criminal case that is over 20 months old is considered to be in a state of backlog

Hanover and St. Elizabeth Parish Courts in the year being 5 months or more less than the overall average. As a whole roughly 71% of the cases disposed during the 2025 calendar year took a year or less to be resolved. The overall trial date certainty rate recorded was 73%, which is still below the targeted minimum of 95%, and has cumulative difference of approximately negative 2 percentage points when compared to the past five years. These statistical highlights, among several others which are detailed in this report strongly suggest that the criminal division of the Parish Courts are on the right path of excellence. Among the main areas of concern are the persistence of the gross case backlog rate over 10%, which suggests that there is a relatively high incidence of inactive cases as a percentage of the total caseload, particularly for courts like the Corporate Area Court - Criminal Division and the St. Ann Parish Court. Additionally, the rate of case adjournments remains moderately high, which is one of the reasons that the trial date adjournments have failed to meet the desired target. Among these are adjournments due to files to be completed, adjournments due to the non-appearance of the accused and adjournments for mediation.

Inferential analysis the size of a court as measured by its caseload did not make a statistically significant difference to performance as measured by the case clearance rate during the 2025 calendar year. This was established using the Analysis of Variances (ANOVA) test which reveals an observed level of significance of greater than 5%, leading to a failure to reject the null hypothesis that court size made no difference to performance. The Parish Courts of Hanover, St. Catherine, and Westmoreland have the enviable status of less than 0.40% of active cases in backlog, meaning that there is a close to zero probability that a case filed at this court will remain active for 20 months, an outstanding accomplishment which is worthy of acclaim. The Parish Courts of Jamaica, having demonstrated significant progress, are well positioned to further contribute to Jamaica's Vision 2030 National Goal 2, "The Jamaican

Society is Secure, Cohesive and Just,” and the 2030 Global Agenda Goal 16, “Peace, Justice and Strong Institutions.”

Glossary of Terms

Clearance rate: The ratio on incoming to outgoing cases or of new cases filed to cases disposed, regardless of when the disposed cases originated. For example, in a given Term 100 new cases were filed and 110 were disposed (including cases originating before that Term) the clearance rate is 110/100 or 110%.

Note: The clearance rate could therefore exceed 100% but the disposal rate has a maximum value of 100%.

A persistent case clearance rate of less than 100% will eventually lead to a backlog of cases in the Court system. The inferred international benchmark for case clearance rates is an average of 90%-110 annualized. This is a critical foundation to backlog prevention in the court systemⁱ.

Disposal rate: As distinct from clearance rate, the disposal rate is the proportion of new cases filed which have been disposed in a particular period. For example, if 100 new cases are filed in a particular Term and 80 of those cases were disposed in said Term, then the disposal rate is 80%.

Note: A persistent case clearance rate of less than 100% will eventually lead to a backlog of cases in the court systemⁱⁱ.

Trial/hearing date certainty: This is the proportion of dates set for trial or hearing which proceed without adjournment. For example, if 100 trial dates are set in a particular Term and 40 are adjourned, then the trial certainty rate would be 60%.

The international standard for this measure is between 92% and 100%.

Courtroom utilization rate: The proportion of courtrooms in full use on a daily basis or the proportion of hours utilized in a courtroom on a daily basis.

The international standard for this rate is 100%.

Case congestion rate: The ratio of pending cases to cases disposed in a given period. It is an indication of how fatigued a court is, given the existing state of resources and degree of efficiency. A case congestion rate of 150% for example, is an indication that given the resources currently at a court's disposal and its degree of efficiency, it is carrying 1.5 times its capacity.

Case File Integrity Rate: Measures the proportion of time that a case file is fully ready and available in a timely manner for a matter to proceed. Hence, any adjournment, which is due to the lack of readiness of a case file or related proceedings for court at the scheduled time, impairs the case file integrity rate.

The international benchmark for casefile integrity is 100%.

Standard deviation: This is a measure of how widely spread the scores in a data set are around the average value of that data set. The higher the standard deviation, the higher the variation of the raw scores in the data set, from the average score. A low standard deviation is an indication that the scores in a data set are clustered around the average.

Outlier: An outlier is a value that is either too small or too large, relative to the majority of scores/trend in a data set.

Skewness: This is a measure of the distribution of scores in a data set. It gives an idea of where the larger proportion of the scores in a data set can be found. Generally, if skewness is positive as revealed by a positive value for this measure, this suggests that a greater proportion of the scores in the data set are at the lower end. If the skewness is negative as revealed by a negative value for this measure, it generally suggests that a greater proportion of the scores are at the higher end. If the skewness measure is approximately 0, then there is an

approximately equal distribution of scores on both the higher and lower ends of the average figure.

Range: This is a measure of the spread of values in a data set, calculated as the highest minus the lowest value. A larger range score may indicate a higher spread of values in a data set.

Case backlog: A case that is in the court system for more than two years without disposition. The gross backlog rate measures the proportion of all cases filed within a given period which remain unresolved for a period of over two years (both active and inactive cases).

The net backlog rate on the other hand measures the proportion of active cases filed in a given period which are unresolved for over two years.

Percentile Rank: This refers to the percentage of scores that are equal to or less than a given score. Percentile ranks, like percentages, fall on a continuum from 0 to 100. For example, a percentile rank of 45 indicates that 45% of the scores in a distribution of scores fall at or below the score at the 35th percentile.

Percentile ranks are useful when you want to quickly understand how a particular score compares to the other scores in a distribution of scores. For instance, knowing a court disposed 300 cases in a given period doesn't tell you much. You don't know how many case disposals were possible, and even if you did, you wouldn't know how that court's score compared to the rest of the courts. If, however, you were told that the court scored at the 80th percentile, then you would know that this court did as well or better than 80% of the courts in case disposals.

Difference between percentage and percentile changes: The difference between percentage and percentage points, the latter is strictly used to compare two percentages, for example, if the clearance rate in 2018 was 89% and the clearance rate in 2019 is 100%, then the appropriate expression to compare these would be "an 11 percentage points increase".

However, if we are comparing two absolute numbers, say, 1000 cases were disposed in 2018, and 1500 in 2019, then there would be a 50% increase in cases disposed.

Weighted Average: Weighted average is a calculation that takes into account the varying degrees of significance of the groups or numbers in a data set. In calculating a weighted average for a particular variable, the individual scores or averages for each group are multiplied by the weight or number of observations in each of those groups and summed. The outcome is then divided by the summation of the number of observations in all groups combined. For example, if we wish to calculate the weighted average clearance rate for the parish courts, the product of the clearance rate and number of cases for each court are computed, added, and then divided by the total number of cases across all the parish courts. This means that a court with a larger caseload has a greater impact on the case clearance rate than a smaller court.

A weighted average can be more accurate than a simple average in which all numbers in a data set are assigned an identical weight.

Continuance and Adjournment: In a general sense, any delay in the progression of a hearing in

which a future date/time is set or anticipated for continuation is a form of adjournment.

However, in order to make a strict distinction between matters which are adjourned for procedural factors and those which are generally avoidable, court statistics utilizes the terms 'continuance' and 'adjournment.' Here, 'continuance' is used strictly to describe situations in which future dates are set due to procedural reasons and 'adjournments' is used to describe the circumstances in which future dates of appearance are set due to generally avoidable reasons.

For example, adjournments for another stage of hearing, say from a plea and case management hearing to a trial hearing or from the last date of trial to a sentencing date are classified as ‘continuance’ but delays for say, missing or incomplete files, due to outstanding medical reports or attorney absenteeism are classified as ‘adjournments’. Adjournments as defined in this document have an adverse effect on hearing date certainty rates, but continuances do not.

Exponential Smoothing: Exponential smoothing of time series data assigns exponentially decreasing weights for newest to oldest observations. In other words, the older the data, the less priority (“weight”) the data is given; newer data is seen as more relevant and is assigned more weight. Smoothing parameters (smoothing constants)— usually denoted by α — determine the weights for observations.

Exponential smoothing is usually used to make short term forecasts, as longer-term forecasts using this technique can be quite unreliable.

- Simple (single) exponential smoothing uses a weighted moving average with exponentially decreasing weights.
- Holt’s trend-corrected double exponential smoothing is usually more reliable for handling data that shows trends, compared to the single procedure.

Triple exponential smoothing (also called the Multiplicative Holt-Winters) is usually more reliable for parabolic trends

ⁱ Source :

<http://courts.mi.gov/Administration/SCAO/Resources/Documents/bestpractice/BestPracticeCaseAgeClearanceRates.pdf>

ⁱⁱ Source :

<http://courts.mi.gov/Administration/SCAO/Resources/Documents/bestpractice/BestPracticeCaseAgeClearanceRates>